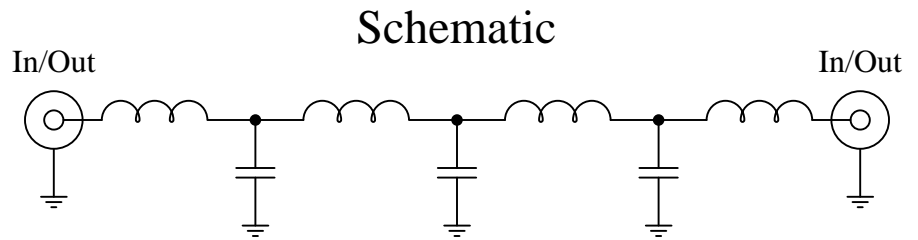


Part Number: CLPFL-1000

Low Pass Range  
DC to 1000 MHz



### Features:

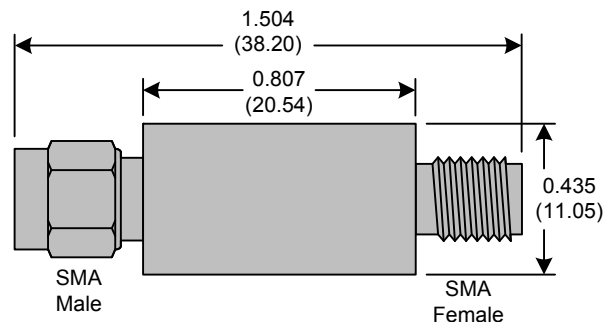
- 7<sup>th</sup> Order Butterworth Response
- 50Ω SMA Connectors

### Applications:

- Test Equipment
- Lab Use

### Maximum Ratings:

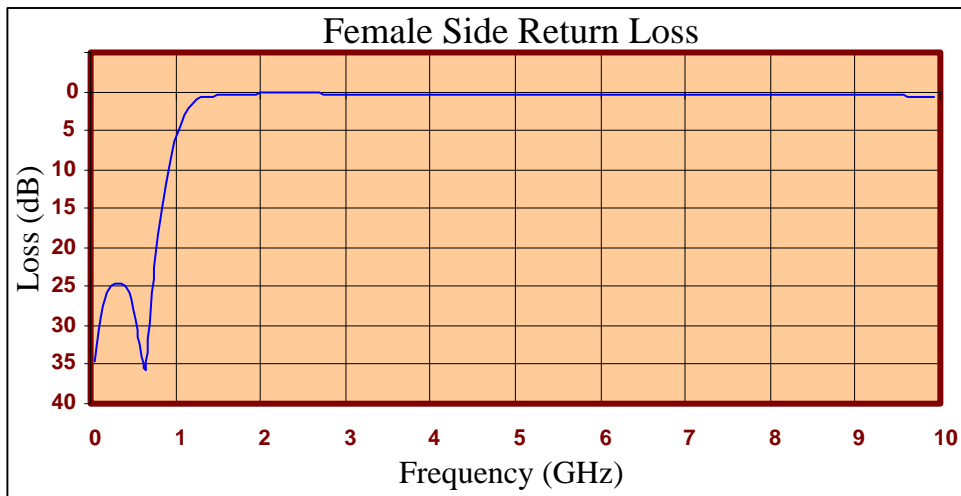
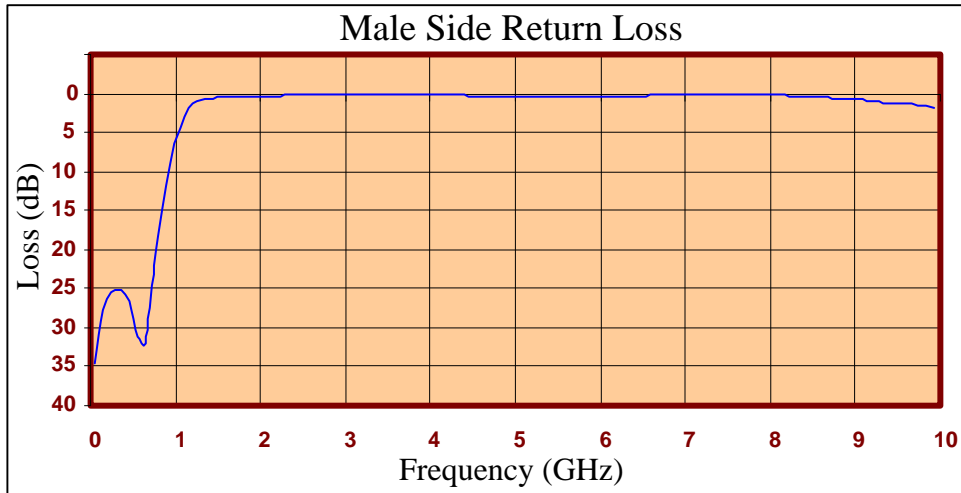
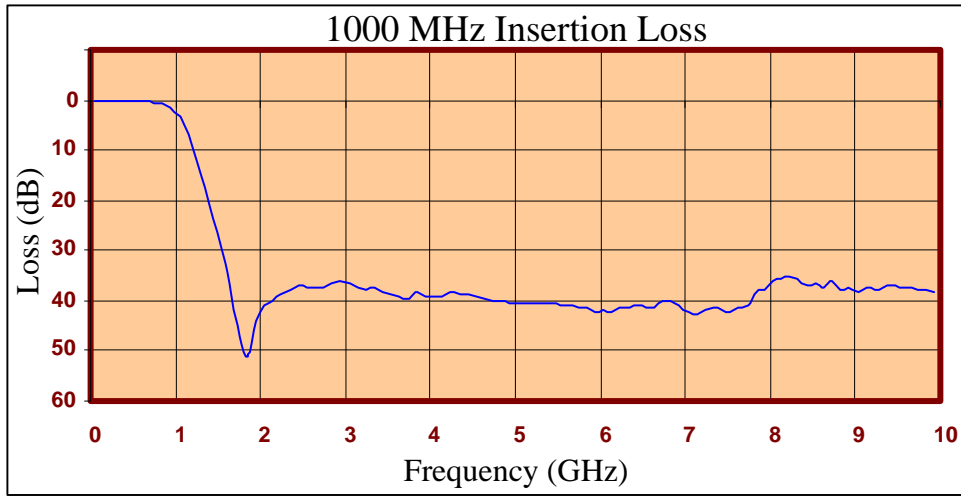
- +36dBm (4 Watts)
- Operating Temperature: -40°C to 85°C
- Storage Temperature: -55°C to 100°C



Crystek's new line of Low Pass Filters are designed in a rugged SMA housing. This filter line has excellent out-of-band rejection. Designed for Test Equipment and General Lab Use.

Rev C

Page 1 of 3





FREQ (MHz)	INSERTION LOSS (dB)	Male Return Loss (dB)	Female Return Loss (dB)
50.000	0.05	34.53	34.56
249.500	0.17	25.41	25.00
449.000	0.23	26.73	25.90
648.500	0.34	32.01	35.42
848.000	0.66	14.95	15.00
947.750	1.38	8.99	9.00
1047.500	3.15	4.43	4.48
1247.000	12.22	0.97	1.06
1446.500	23.68	0.56	0.59
1546.250	29.31	0.50	0.50
1646.000	36.37	0.45	0.43
1845.500	51.18	0.38	0.32
2045.000	40.93	0.32	0.25
2244.500	38.57	0.27	0.23
2444.000	36.86	0.24	0.23
2643.500	37.37	0.21	0.27
3042.500	36.59	0.16	0.35
3341.750	37.44	0.11	0.41
3641.000	39.34	0.05	0.44
4040.000	38.96	0.09	0.38
4339.250	38.53	0.24	0.36
4638.500	39.64	0.32	0.38
5037.500	40.50	0.37	0.47
5336.750	40.65	0.35	0.50
5636.000	40.99	0.35	0.49
6035.000	42.05	0.32	0.42
6334.250	41.40	0.29	0.35
6633.500	41.31	0.27	0.30
7032.500	42.40	0.23	0.30
7331.750	41.36	0.21	0.32
7631.000	41.25	0.19	0.39
8030.000	36.13	0.24	0.47
8329.250	35.74	0.28	0.45
8628.500	37.38	0.49	0.43
9027.500	38.37	0.82	0.41
9326.750	37.20	1.13	0.47
9626.000	37.33	1.41	0.60
9925.250	38.40	1.85	0.83

**Product Control:**

Crystek Part Number:	CLPFL-1000	Release Date:	04-Aug-2015
Revision Level:	C	Responsible:	K. Piotrowicz

Rev C
Page 3 of 3

