

PRODUCT UPDATE

Written by

Marketing

November, 2024

#231

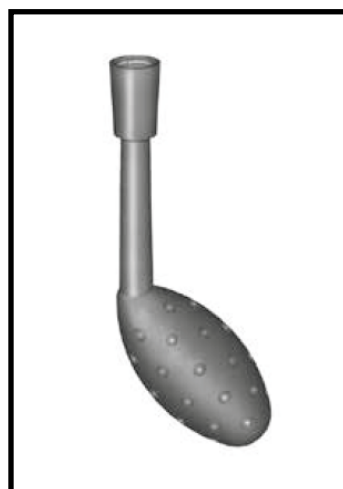
DCH Spanner Replaced with DCM Sockets for Notched Nuts

Description of change

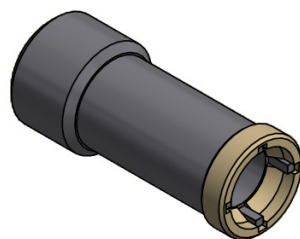
The DCH spanner tools for tightening the notched nuts of the panel mounted receptacles are becoming obsolete and replaced with the DCM sockets with either 4 or 6 notches. The DCH spanner tool is hand-tightened so it can be difficult to determine if the notched nut is torqued to the correct value. The DCM Sockets are designed to fit a 1/4" square drive which can easily be adapted to a torque tool preset to the appropriate torque value.

The DCM sockets are made from Stainless Steel and have PEEK inserts to avoid scratching the surface.

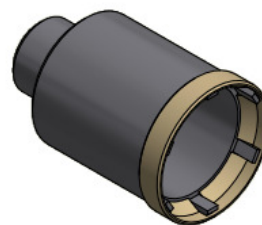
DCH Spanner



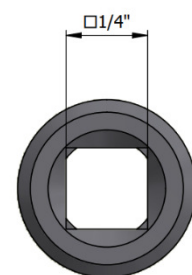
DCM Socket



4 Notches



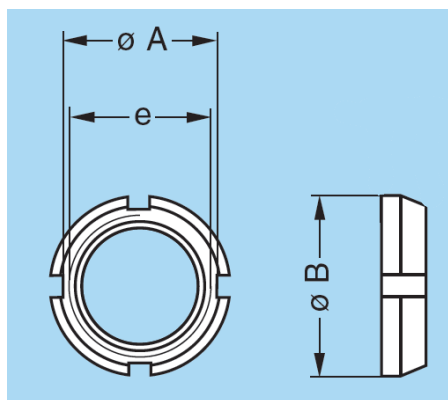
6 Notches



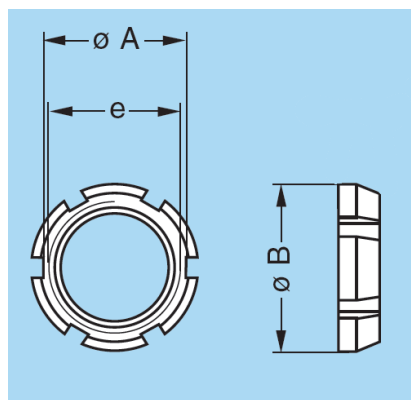
1/4" Square Drive

Timing of Change

Once inventory is depleted the DCH Spanner tool will become obsolete and replaced with the DCM Sockets. Please see the chart on the next page with new design part numbers.



4 notches



6 notches

Dimensions in mm

Previous Design	New Design					
Spanner Part Number	1/4" Socket for Notched Nut	Number of Notches	Notched Nut Part Number	e	A	ØB
DCH.91.101.PA	DCM.65.088.AZ4	4	GEG.00.240.xx	M7	8.6	Ø10
DCH.91.121.PA	DCM.65.106.AZ4	4	GEG.0S.240.xx	M9	11	Ø12
DCH.91.181.PA	DCM.65.159.AZ4	4	GEG.0E.240.xx	M14	16	Ø18
DCH.91.161.PA	DCM.65.141.AZ4	4	GEG.1S.240.xx	M12	14	Ø16
DCH.91.141.PA	DCM.65.122.AZ4	4	GEG.1S.242.xx	M11	12	Ø14
DCH.91.201.PA	DCM.65.176.AZ6	6	GEG.1E.240.xx	M16	18	Ø20
DCH.91.201.PA	DCM.65.176.AZ6	6	GEG.2S.240.xx	M15	18	Ø20
DCH.91.241.PA	DCM.65.205.AZ6	6	GEG.2S.241.xx	M19	21	Ø24
DCH.91.251.PA	DCM.65.205.AZ6	6	GEG.2E.240.xx	M20	23	Ø25