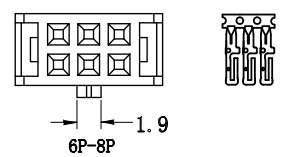
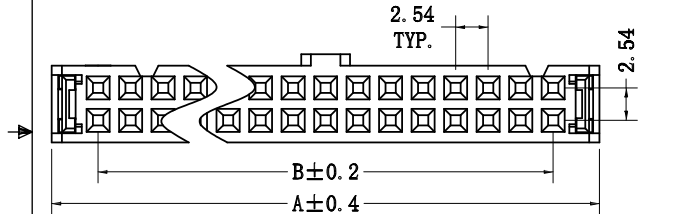
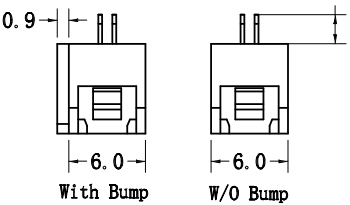
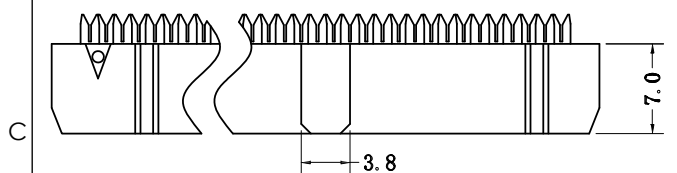
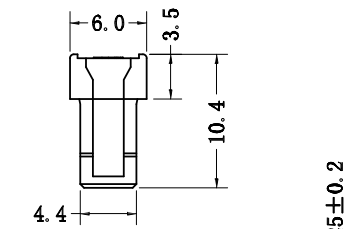
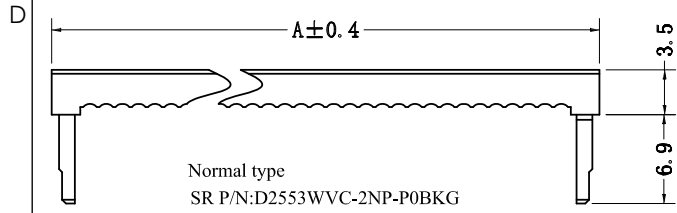


THE INFORMATION CONTAINED IN THIS DRAWING IS THE SOLE PROPERTY OF EASE ELECTRONICS. ANY REPRODUCTION IN PART OR WHOLE WITHOUT THE WRITTEN PERMISSION OF EASE ELECTRONICS IS PROHIBITED.

| REVISIONS | | | |
|-----------|-----------------|---------|-----------|
| REV | DESCRIPTION | DATE | APPROVED |
| A | INITIAL RELEASE | 05/7/24 | CHILLY. L |
| | | | |
| | | | |



SPECIFICATION:
Current Rating: 3 A.
Withstanding Voltage: AC 1000V.
Insulation Resistance: 1000MΩ Min
Contact Resistance: 20mΩ Max..
Operating Temperature: -40°C ~ +105°C.

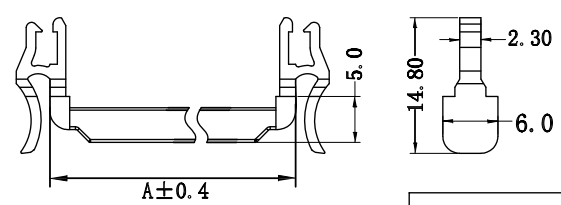
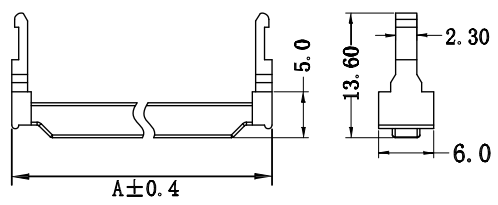
D2553 W V X- 2NP - P0 XX G X
① ② ③ ④ ⑤ ⑥ ⑦ ⑧ ⑨

- ① Series No.
- ② Category: W-Wafer
- ③ Welding Board Angle: V- Straight 180°
- ④ Feature Type: C-C type D-D type
- ⑤ Circuit No.: 206-2x3PIN~264-2x32PIN,
- ⑥ Material: P0-PBT, UL94V-0
- ⑦ Color: BK-Black GY-Gray
- ⑧ Plating Method: G-Au Or Sn Over Ni, E-Au 30u"
- ⑨ Options: Blank-Normal type
1- A TYPE 3 pieces ; 1- B TYPE 3 pieces

A=2.54*N0 of Positions/2+4.70
B=2.54*N0 of Positions/2-2.54

A TYPE Three Piece
SR P/N: D2553WVC-2NP-P0BKG1

B TYPE Three Piece
SR P/N: D2553WVD-2NP-P0BKG1



| | | | | | | | | | |
|--|--|--|--|---|-------------------------|---|-----------|--|--|
| UNLESS OTHERWISE SPECIFIED, DIMENSIONS ARE IN INCHES [mm] | | APPROVALS | | DATE | | <div>EASEelectronics</div> <div>Ease Electronics Co., Limited</div> <div>Zone A, 2nd Floor, Bldg A, No.45, Changn 3rd Rd, Tanzhou, 528467</div> <div>Zhongshan, Guangdong, China +86-756-888810</div> | | | |
| OVERALL CABLE LENGTH TOLERANCE: ≤12 [305] = +1 [25] / -0 >12 [305] ≤60 [1524] = +2 [51] / -0 >60 [1524] ≤120 [3048] = +4 [102] / -0 >120 [3048] ≤300 [7620] = +6 [152] / -0 >300 [7620] = +5% / -0% | | DRAWN BY LUKE. L | | 05/7/2024 | | | | | |
| | | CHECKED BY TILY. H | | 05/7/2024 | | | | | |
| | | APPROVED BY CHILLY. L | | 05/7/2024 | | | | | |
| ALL OTHER DIMENSIONAL TOLERANCES: .X = .3 .XX = .15 | | CONFIGURATION DETAILS OF UNDIMENSIONED FEATURES MAY VARY | | PART NUMBER | | D2553WVC-216-P0BKG1 | | | |
| <div>PROJECTION</div> <div></div> | | COLOR VARIATIONS MAY OCCUR | | PRODUCT DESCRIPTION | | | | | |
| | | | | 16 Position Rectangular Receptacle Connector IDC Gold 28 AWG | | | | | |
| | | | | ID I | SERIES NO. IDC-D2553 | DWG. NO. I0010 | REV. C | | |
| REF | | SCALE: NONE | | CAD FILE: I0010 | | SHEET 1 OF 1 | | | |