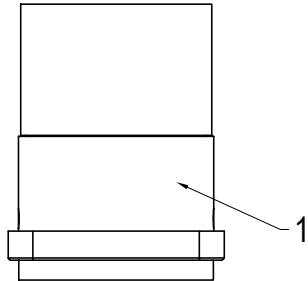
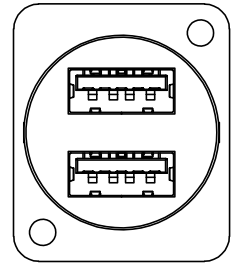
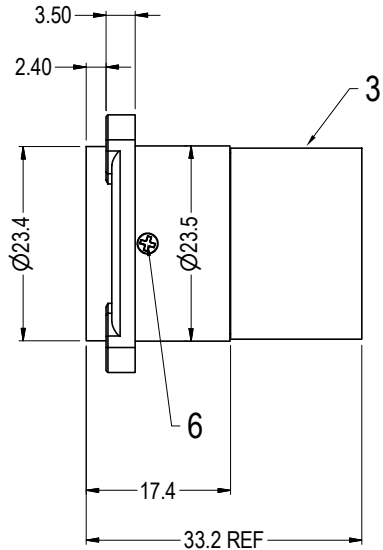
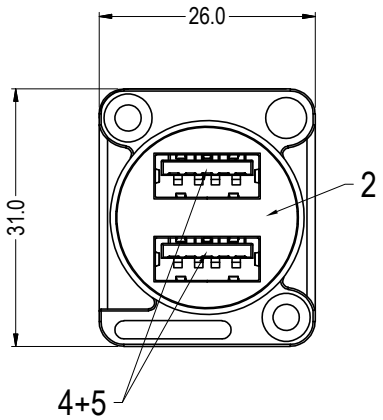
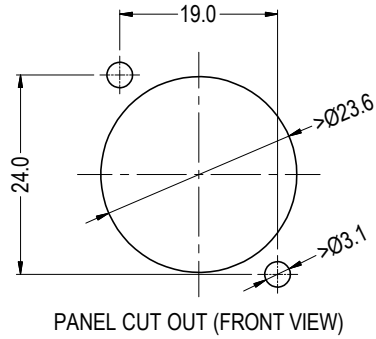


Electrical Specification

Contact Resistance:  $\leq 30\text{m}\Omega$   
Dielectric Strength: 500V AC  
Insulation Resistance : 1000M $\Omega$   
Operating Temperature: -25°C to +85°C  
Rated Current: 1.5A  
Rated Voltage: 30V  
Lifetime: >1500 mating cycles



ISS.	AMEND	DATE
1	ISSUED	02/08/24



ITEM	DESCRIPTION	MATERIAL / FINISH
1	XLR FT FRAME	ZINC DIECAST BLACK
2	USB COVER FRONT	PA6 / BLACK
3	USB COVER REAR	PA6 / BLACK
4	USB3.0 CONNECTOR (4x)	COMPOSITE
5	PCB (2x)	FR4
6	SCREW (2x)	STEEL

<b>RoHS</b> COMPLIANT
<b>TOLERANCE</b> NO DEC. PLACE $\pm$ 1 DEC. PLACE $\pm$ 2 DEC. PLACE $\pm$ HOLE $\varnothing$ $\pm$ ANGLES $\pm$ UNLESS OTHERWISE STATED

**Cliff Electronic Components Ltd.**  
76 Holmethorpe Avenue, Holmethorpe Industrial Estate,  
Redhill, Surrey, RH1 2PF, England, UK  
Tel: 01737-771375 Fax: 01737-766012 Website: www.cliffuk.co.uk

THE CONTENTS OF THIS DOCUMENT MUST NOT BE COPIED OR DISCLOSED TO A 3rd PARTY WITHOUT WRITTEN PERMISSION OF CLIFF UK. © 2024

DIMENSIONS IN MILLIMETERS UNLESS OTHERWISE STATED. WORK TO DIMENSIONS. REMOVE ALL BURRS. IF IN DOUBT ASK.			3rd ANGLE PROJECTION:	DO NOT SCALE
MATERIAL: SEE TABLE	FINISH: SEE TABLE		TITLE: XLR FT DUAL USB3.0 A-A FEMALE BLACK METAL	
DRAWN: T.J.O.	APPROVED: D.P.J.	DRWG. No. CP30088	FORM: A4DRWGH	