



Asset Tracking Evaluation Kit

QUICK START GUIDE

Overview and Box Contents

This guide explains how to set up a wireless power network using the Energon 1W PowerBridge transmitter or Energon 1W Omnidirectional PowerBridge transmitter in combination with the Wiliot ecosystem, which includes products such as the dual band Wiliot Pixels tag, the Wiliot software application, and the Wiliot cloud.



Figure 1: Wireless Power Network System Diagram

Box Contents:

- Energon 1W PowerBridge transmitter or Energon 1W Omnidirectional PowerBridge transmitter (1)
- 5V/1A USB power adapter and USB-A to USB-C cable (1)
- Wall/ceiling mounting plate (1)
- Wiliot Pixels tags (10)



Figure 2: Energon 1W PowerBridge transmitter and Wiliot Pixels Tags

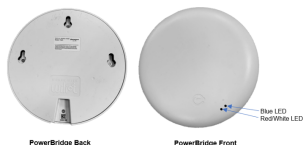
1. Energos PowerBridge Setup

- Connect the USB cable to the Energos PowerBridge transmitter and the power supply.
- Mount the Energos PowerBridge transmitter on a stand, a wall, or a ceiling using the keyhole screw mounts or with the included optional mounting plate. Position it so that it points towards the intended area of operation.



Figure 3: Mounting Diagram

Energos 1W PowerBridge Transmitter



Energos 1W Omnidirectional PowerBridge Transmitter

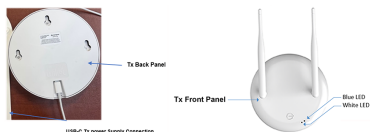


Figure 4: Energos 1W PowerBridge transmitter and Energos 1W Omnidirectional PowerBridge transmitter Back/Front Views

2. Wiliot Pixels Tag Setup

Pixels tag features:

- Postage stamp-sized Pixels tag
- Battery-free Pixels tag
- Temperature and location sensing
- Surface occupancy, proximity, and humidity (coming soon)



Figure 5: Wiliot Pixels Tags

- Paste/place the Wiliot Pixels tag. The image below shows an example of the Pixels tag positioning.

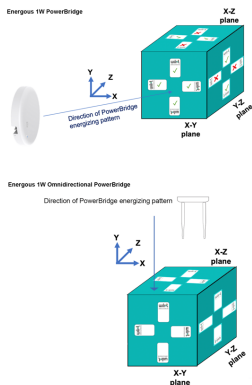
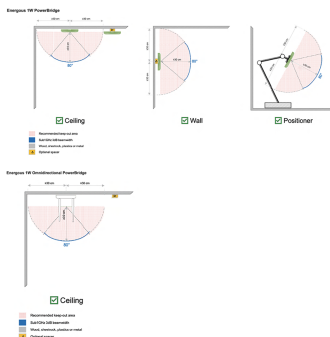


Figure 6: Wiliot Pixels Tags Positioning

3. Wireless Power Network Setup and Operation



- Place the Energonix PowerBridge transmitter and Wiliot Pixels tag between 1~10 meters.
- Place the Wiliot Pixels tag in the line of sight of the Energonix PowerBridge transmitter.

System Level Operation:

- Connect the Energonix PowerBridge transmitter power supply to a power source.
- After power-on, the blue LED flashes for 30 seconds indicating the Energonix PowerBridge transmitter is running.
- The Energonix PowerBridge transmitter starts RF power transmission automatically in 918 MHz, and the white LED turns on solid.

4. Wiliot Pixels Tag Account Setup

- Go to the Wiliot portal site: <https://platform.wiliot.com/>
- Sign up for a new user account.
- After the new account has been approved/activated, login to the account.
- Account can also be accessed via the Wiliot mobile app.

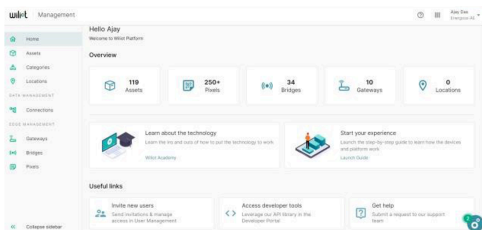


Figure 8: Wiliot Portal Homepage Login Screen

FCC Warning Statement

FCC NOTICE: This kit is designed to allow:

Product developers evaluate electronic components, circuitry, or software associated with the kit to determine whether to incorporate such items in a finished product.

Software developers to write software applications for use with the end-product.

This kit is not a finished product and when assembled may not be resold or otherwise marketed unless all required FCC equipment authorizations are first obtained. Operation is subject to the condition that this product does not cause harmful interference to licensed radio stations and that this product accept harmful interference. Unless the assembled kit is designed to operate under part 15, part 18 or part 95 of this chapter, the operator of the kit must operate under the authority of an FCC license holder or must secure an experimental authorization under part 5 of this chapter.

This device is not, and may not be, offered for sale or lease, or sold or leased, until authorization is obtained. This evaluation kit does not include SAR keep out zone sensors that may be needed in certain use cases. A 20 cm separation distance should be maintained during operation, test, and evaluation to ensure continuing SAR compliance.



Contact:

sales@energous.com

T: (408) 963-0200

