



Expertise Applied | Answers Delivered

8755 W. Higgins Road
Suite 500
Chicago, IL 60631

www.littelfuse.com

Notification Letter

Aug 27, 2024

Subject: Alternative box package for DRS-DTH series

To Our Valued Customers,

Littelfuse would like to notify you that due to late delivery and supplier concern on the current box of the DRS-DTH series, we will use the alternative box as shown below. This will be used/applied immediately starting August 28 shipment.

This change shall relate to **all DRS-DTH material PN's**

Material Change: **None**

Process Change: **None**

Finish Good Form, fit, function changes: **None**

Part number changes: **None**

Distinction of products: **None**

Reed Switch Supply and Delivery: **None**

This is for your information.

Should you have further queries, please let us know.

Crispin Zulueta
Product Manager Asia – Reed Switches
Electronics Business Unit
Littelfuse Inc.
czulueta@Littelfuse.com

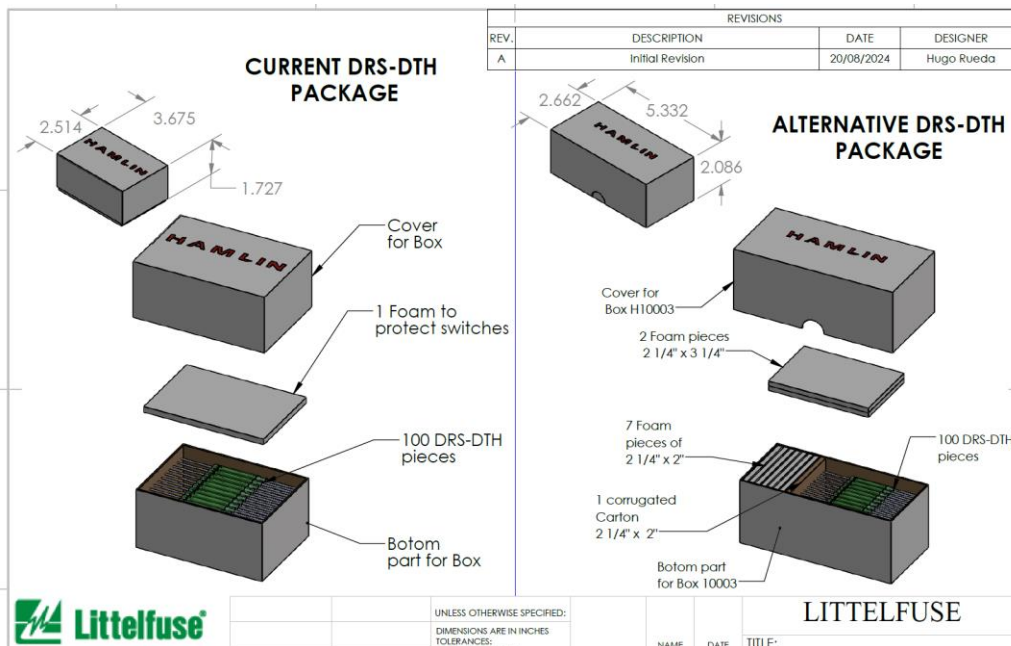
Wayne Wang
Global Product Manager – Reed Switches
Electronics Business Unit
Littelfuse Inc.
wwang16@littelfuse.com

Notification Letter

DRS-DTH-70-85	DRS-DTH-Q4155	DRS-DTH-65-70
DRS-DTH-60-65	DRS-DTH-45-50	DRS-DTH-70-75
DRS-DTH-Q410-6	DRS-DTH-85-90	DRS-DTH-50-60
DRS-DTH-Q2167-2	DRS-DTH-Q4604	DRS-DTH-50-55
DRS-DTH-Q519-7	DRS-DTH-Q1467-1	DRS-DTH-70-80
DRS-DTH-75-80	DRS-DTH-90-95	DRS-DTH-Q1133-1
DRS-DTH-Q4657	DRS-DTH-Q2524	DRS-DTH-55-60
DRS-DTH-50-80	DRS-DTH-40-45	

PN's highlighted are with open order as of this date 27th Aug 2024.

Box comparison photo



Physical Samples

