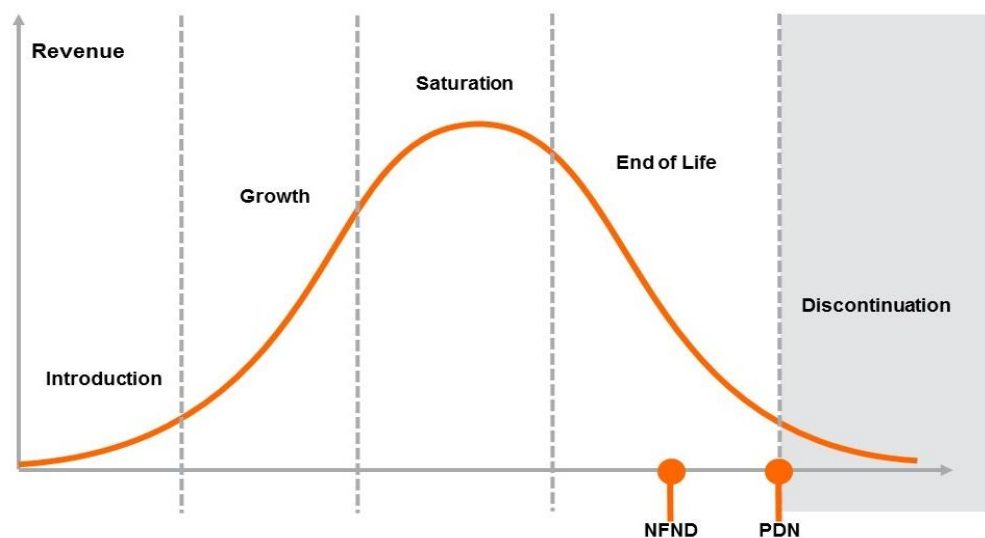


Product Or Individual Q-Code Discontinuation (acc. JEDEC J-STD-048) OS-PDN-2024-042

18 June 2024

Last order: 30 September 2024

Last delivery: 31 December 2024



Important notes:

- Series production ends with the LTO (Last Time Order) date.
- Last order must be placed latest before LTO date as standard order.
- Latest possible request date is defined by the LTD (Last Time Delivery) date and is valid for LTO orders as well as existing order backlog.
- The purchase quantity is limited to once per month until LTD date and is considered as NCNR (Non-Cancelable – Non-Returnable).
- To cover short term demand fluctuation, customer is asked to keep a sufficient buffer stock to avoid supply disruptions.

Please direct your feedback to your local Sales office.

DISCONTINUED				NEW (REPLACEMENT)		
Device	Ordering Code	Brand	Reason for discontinuation	Device	Datasheet Ordering Code	Brand
LLFL-2T06-O	Q65113A3949	LED Engin	Low demand	N/A	N/A	N/A
LLNF-2T06-H	Q65113A3192	LED Engin	Low demand	N/A	N/A	N/A
LLNS-2T06-H	Q65113A3191	LED Engin	Low demand	N/A	N/A	N/A
LLNS-2T06-O	Q65113A3089	LED Engin	Low demand	N/A	N/A	N/A