



ISL Products International

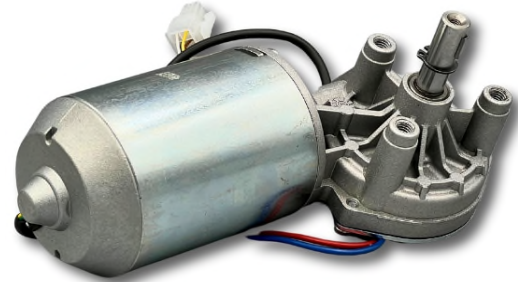
## ø63mm Worm Gear Motor Right Side Gearbox MOT-63WGM-R65E

Online ID#:

WGM-63-24-65-R-E

Our Worm Gear Motors are an excellent automation solution providing right angle output with self-braking technology. They are equipped to handle varying loads and are best for intermittent duty operation. With endless performance combinations, we have the gear motor for your next application.

Contact Us for alternative solutions!

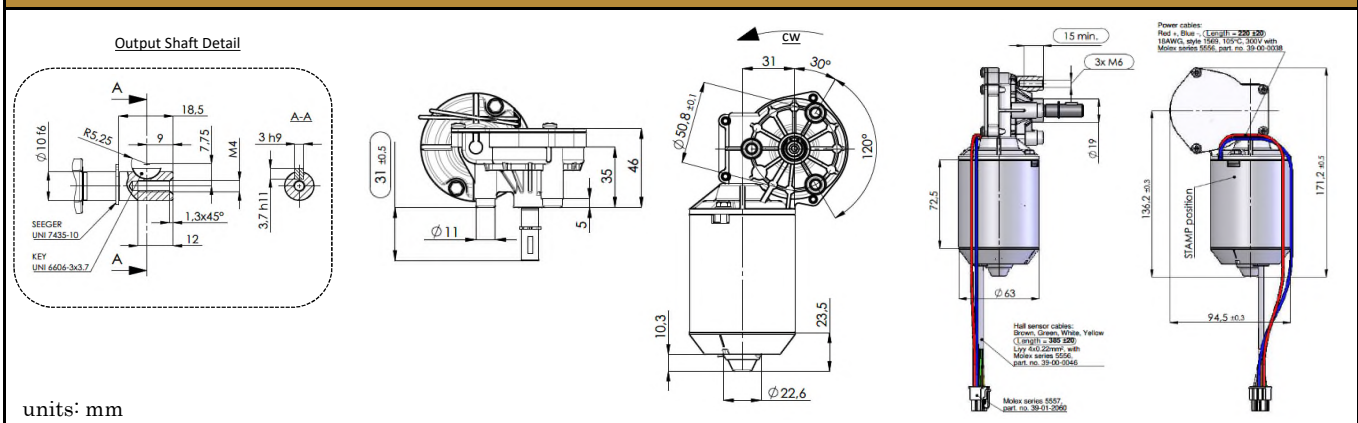


### Specifications

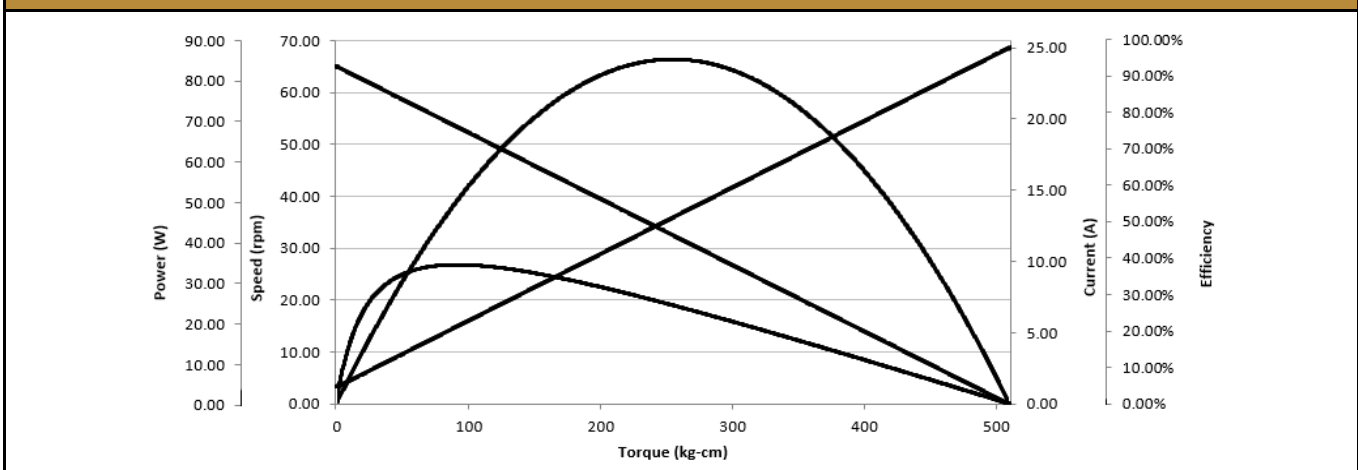
<b>Gearhead Type:</b>	Worm - Right side	<b>No-Load Speed:</b>	65 rpm (+/- 10%)
<b>Motor Type:</b>	Carbon - Brushed	<b>No-Load Current:</b>	< 1.5 A
<b>Rated Voltage:</b>	24V DC	<b>Stall Current:</b>	25 A
<b>Rated Speed:</b>	53 rpm	<b>Max. Power:</b>	85 W
<b>Rated Torque:</b>	92 kg.cm	<b>Termination Style:</b>	Con.: Molex 39-01-2060

\* Gearbox limitations are set at 300 kg.cm, operating past this torque limit may create premature failure.

### Dimensions



### Performance Curve

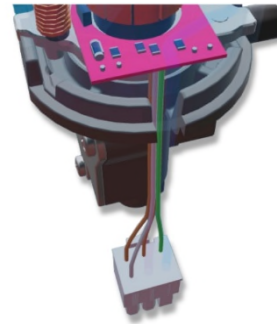




ISL Products International

## Magnetic Encoder 2 Channel - 1PPR / 2 Pole

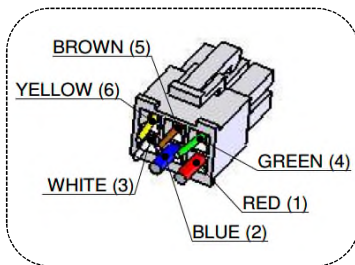
This gear motor is equipped with one of our magnetic encoders to provide exceptional feedback and control.



### Specifications

Type:	Magnetic	Number of Wires:	6
Channel(s):	2	Connector Type:	Molex 39-01-2060
Pulses per Revolution:	1 PPR	Supply Voltage:	3.8 ~ 20 VDC

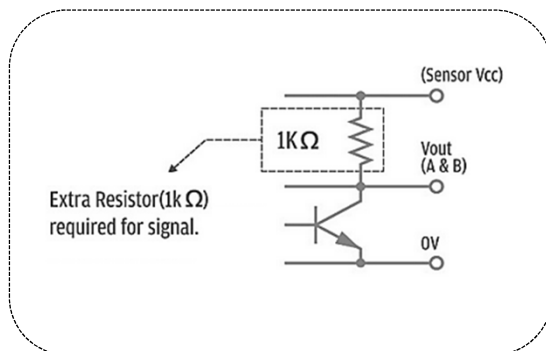
### Dimensions / Connections



Encoder Connections		
1	Red	(+) Motor
2	Blue	(-) Motor
3	White	Hall Sensor <i>GRND</i>
4	Green	Hall Sensor A – <i>V Out</i>
5	Brown	Hall Sensor <i>Vcc</i>
6	Yellow	Hall Sensor B – <i>V Out</i>

### Electrical Characteristics

Output Circuit



Output Wave

