

XLamp® XE-G LED Product Change Notification

Customer Name: XE-G Customers

PCN Reference Number: PCN-06069
Date Issued: June 4, 2024

Please be advised that Cree LED has qualified flux improvements and voltage changes to XLamp® XE-G LEDs, which will result in higher efficiency for all colors. The improved performance version of XE-G LEDs will begin shipping 90 days after the PCN Issue Date. Customers may request the new version to ship earlier than this date.

Please review the additional PCN information below.

Table 1 provides a list of products affected by this Major change:

Table 1 Affected Products List

Cree LED Part Number
XEGAWT-Hx-xxxx-xxx-xxxxxxxxxxxx
XEGAVT-Hx-xxxx-xxx-xxxxxxxxxxxx
XEGARY-Hx-xxxx-xxx-xxxxxxxxxxxx
XEGABL-Hx-xxxx-xxx-xxxxxxxxxxxx
XEGAPB-Hx-xxxx-xxx-xxxxxxxxxxxx
XEGACY-Hx-xxxx-xxx-xxxxxxxxxxxx
XEGAPC-Hx-xxxx-xxx-xxxxxxxxxxxx
XEGAGR-Hx-xxxx-xxx-xxxxxxxxxxxx
XEGAPM-Hx-xxxx-xxx-xxxxxxxxxxxx
XEGAPL-Hx-xxxx-xxx-xxxxxxxxxxxx
XEGAPY-Hx-xxxx-xxx-xxxxxxxxxxxx
XEGAAM-Hx-xxxx-xxx-xxxxxxxxxxxx
XEGAPA-Hx-xxxx-xxx-xxxxxxxxxxxx
XEGARO-Hx-xxxx-xxx-xxxxxxxxxxxx
XEGAPO-Hx-xxxx-xxx-xxxxxxxxxxxx
XEGARD-Hx-xxxx-xxx-xxxxxxxxxxxx
XEGAPR-Hx-xxxx-xxx-xxxxxxxxxxxx
XEGAHR-Hx-xxxx-xxx-xxxxxxxxxxxx

Description of the Change

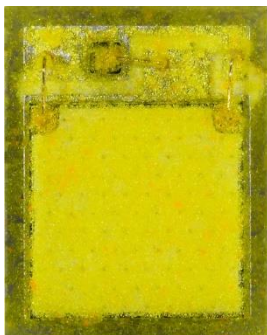
Cree LED will be improving the typical forward voltage and reverse voltage characteristics for the affected LEDs. Table 2 shows the current and new values.

Table 2 LED Product Characteristics; Current Values & Estimated New Values

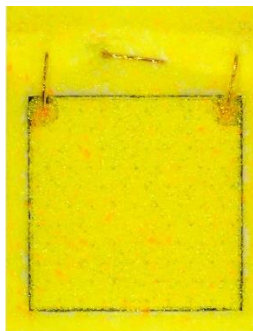
LED	Forward Voltage (V) @1000 mA, 25 °C		Reverse Voltage (V)	
	Current Typical	New Typical	Current Typical	New Typical
XE-G White	3.0	2.9	-1	-5
XE-G Violet	3.1	3.2	-1	-5
XE-G Royal Blue	3.05	3	-1	-5
XE-G Blue	3.05	2.9	-1	-5
XE-G PC Blue	3.05	2.9	-1	-5
XE-G Cyan	3.05	2.8	-1	-5
XE-G PC Cyan	3.05	2.9	-1	-5
XE-G Green	3.05	2.75	-1	-5
XE-G PC Mint	3.05	2.9	-1	-5
XE-G PC Lime	3.05	2.9	-1	-5
XE-G PC Yellow	3.05	3	-1	-5
XE-G Amber	2.4	2.4	-1	-5
XE-G PC Amber	3.05	3	-1	-5
XE-G Red Orange	2.4	2.4	-1	-5
XE-G PC Red Orange	3.05	3	-1	-5
XE-G Red	2.4	2.4	-1	-5
XE-G PC Red	3.05	3	-1	-5
XE-G Photo Red	2.4	2.35	-1	-5

The visual appearance of the XE-G LEDs will be different. The following photos show the difference between the current and new appearances.

XE-G White Current



XE-G White New



XE-G Violet Current



XE-G Violet New



XE-G Royal Blue Current



XE-G Royal Blue New



XE-G Blue Current



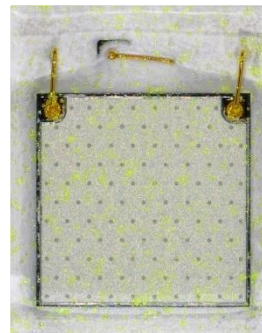
XE-G Blue New



XE-G PC Blue Current



XE-G PC Blue New



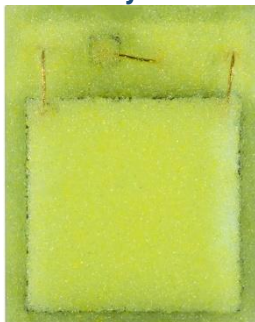
XE-G Cyan Current



XE-G Cyan New



XE-G PC Cyan Current



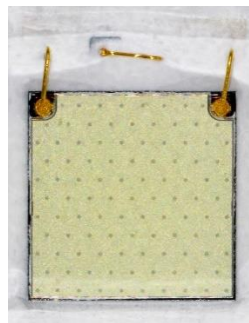
XE-G PC Cyan New



XE-G Green Current



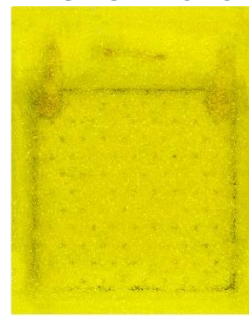
XE-G Green New



XE-G PC Mint Current



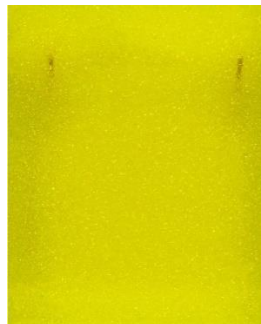
XE-G PC Mint New



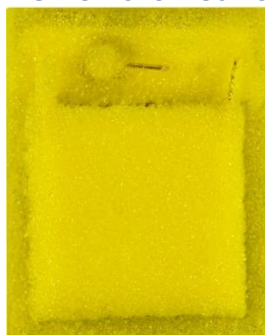
XE-G PC Lime Current



XE-G PC Lime New



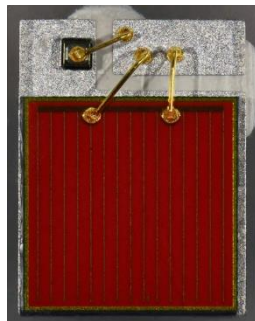
XE-G PC Yellow Current



XE-G PC Yellow New



XE-G Amber Current



XE-G Amber New



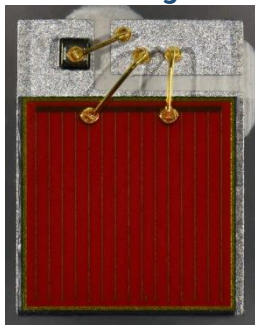
XE-G PC Amber Current



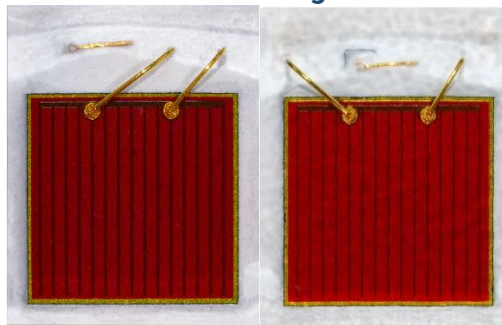
XE-G PC Amber New



XE-G Red-Orange Current



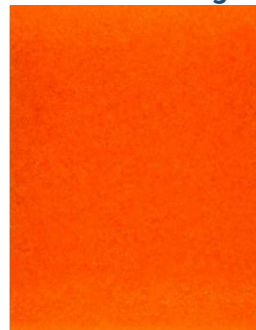
XE-G Red-Orange New



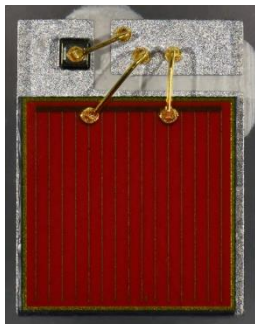
XE-G PC Red-Orange Current



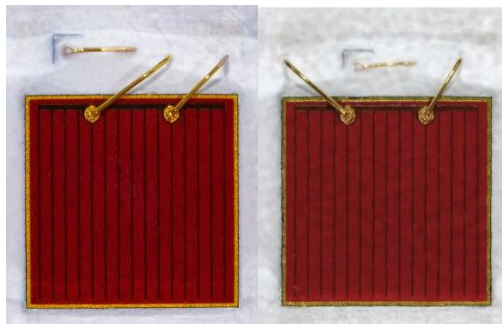
XE-G PC Red-Orange New



XE-G Red Current



XE-G Red New



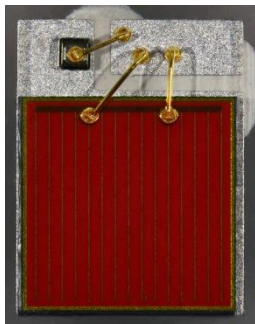
XE-G PC Red Current



XE-G PC Red New



XE-G Photo Red Current



XE-G Photo Red New



Reason for the Change

This change is being made to improve the performance and efficiency of the XE-G LEDs.

Change Impact on Form, Fit, Function, or Reliability

This has no impact on the form, fit, function, or reliability of these LEDs beyond the changes described in this PCN. The data sheet will be updated within 90 days of the PCN Issue Date to show higher flux order codes that are available only on the improved performance versions of XE-G LEDs.

Key Dates

Table 3 provides an estimated date for initial shipments of the LEDs affected by this change. Any updates to this date can be provided by the Cree LED contact listed in Table 4.

Table 3 Key PCN Estimated Dates

Estimated Initial Ship Date:	90 days from Issue Date
------------------------------	-------------------------

Starting on the estimated shipment date in Table 3, customers may receive LEDs with the updated performance characteristics. Each reel will contain only LEDs with the current performance or only LEDs with the new performance characteristics. Reels of the new performance LEDs can be identified by an A1 in the last two characters of the bin code. The bin code is clearly identified on each packaged reel.

Current and new performance LEDs will be contained in the same shipment. Customers purchasing through a distributor might be delayed seeing this change until the inventory with the current performance is depleted from distributor stock.

The current datasheets available on the Cree LED website will be updated with changes described in this PCN on or before the Estimated Initial Ship Date in Table 3.

3. Cree LED Contact Information

If you have any questions regarding this PCN please contact:

Table 4 PCN Contact

Contact:	Cree LED Customer Service
Contact E-Mail:	CS@cree-led.com
Contact Phone:	US toll free: 1-844-273-3533 Outside the US: +1 919-313-5301
Address:	Cree LED, Inc. 4001 E Hwy 54, Suite 2000 Durham, NC 27709 USA