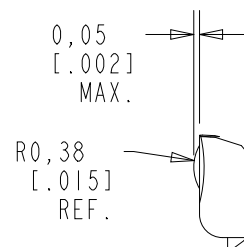


RAQ-33985-B148

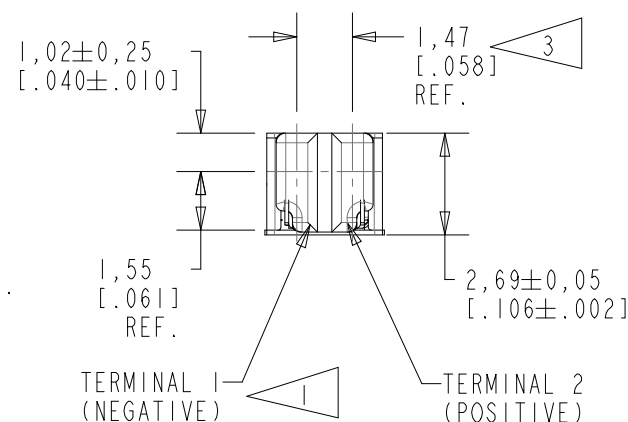
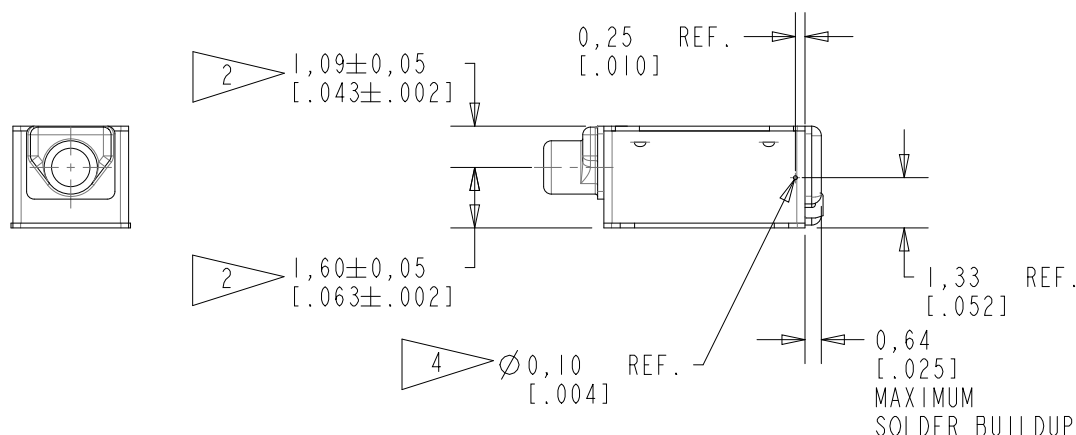
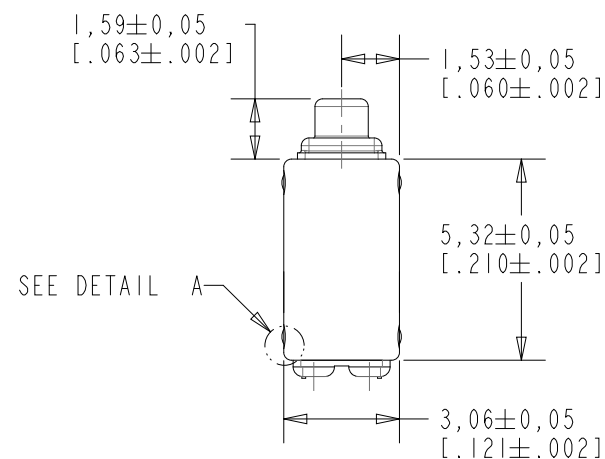
SHT 1.1

NOTES:

- 1 A POSITIVE GOING VOLTAGE AT TERMINAL 2, RELATIVE TO TERMINAL 1, CAUSES A DECREASE IN PRESSURE AT THE SOUND OUTLET.
- 2 LOCATED FROM TWO SURFACES FOR CUSTOMER CONVENIENCE. ONLY APPLICABLE FROM ONE SURFACE, NOT TO BE USED TOGETHER.
- 3 DIMENSION TO APPROXIMATE CENTER OF TERMINAL PAD.
- 4 IT IS IMPORTANT TO KEEP VENT HOLE CLEAR AT ALL TIMES. CLOGGING OF HOLE WILL CAUSE PERFORMANCE CHANGES.



DETAIL A
SCALE 15:1



DIMENSIONS IN MILLIMETERS [INCHES]

Revision	C.O. #	Implementation Date	RELEASE LEVEL	REVISION
			DRAFT	

KNOWLES CORPORATION

SCALE: 5:1		DR. BY JDB	DATE 2-27-20
DO NOT SCALE DRAWING		CK. BY ---	DATE ---
TITLE: RECEIVER		APP. BY ---	DATE ---
OUTLINE DRAWING		RAQ-33985-B148 SHT 1.1	

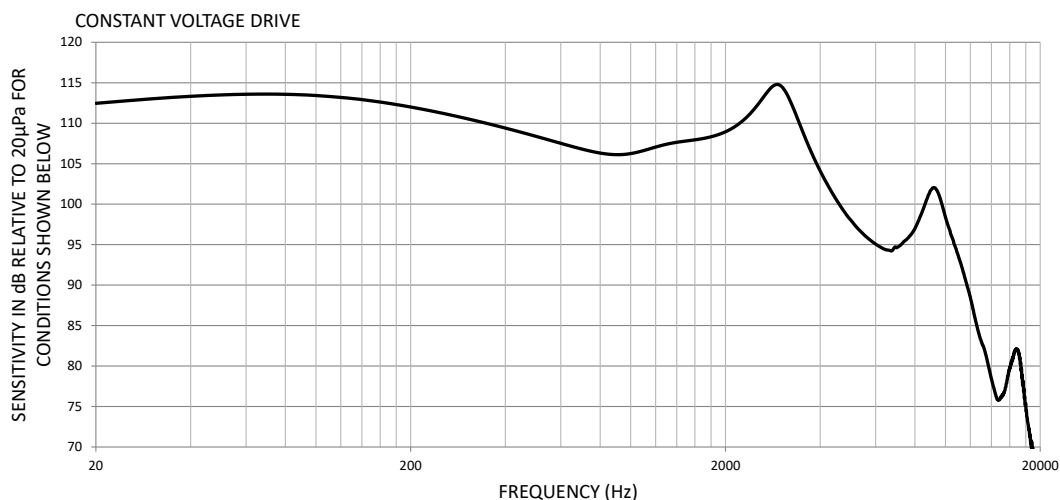
THIS IS AN UNDAMPED MAGNETIC BALANCED ARMATURE
RECEIVER INTENDED FOR USE IN EARPHONE APPLICATIONS.

NO DAMPING

RAQ-33985-B148

Sht 2.1

RoHS Compliant



ACOUSTICAL

SENSITIVITY: DEVICE WILL PRODUCE THE SPL LISTED BELOW WITH THE TEST CONDITIONS DESCRIBED IN TABLE 3. NOMINAL SENSITIVITY AT 1000 Hz IS dB RELEVATE TO 20 µPa. ALL OTHER VALUES IN dB RELATIVE TO THE SENSITIVITY AT 1000 Hz.

LIMIT TYPE	FREQUENCY (Hz)	MINIMUM	NOMINAL	MAXIMUM
REL	20	0.0	4.0	8.0
REL	100	3.0	7.0	11.0
REL	200	2.0	5.0	8.0
REL	500	-0.5	1.5	3.5
REF	1000	-2.0	106.2	+2.0
PEAK 1	2620-3220	6.5	9.5	12.5
VALLEY	5930-7530	+15		
PEAK2	8000-11000	-12.0	-7.0	-2.0

TABLE 1

TOTAL HARMONIC DISTORTION: DEVICE WILL NOT EXCEED TOTAL HARMONIC DISTORTION LEVELS LISTED BELOW:

FREQUENCY (Hz)	AC DRIVE (Vrms)	BIAS	LIMIT (%)
50	0.115	0	5
0.333*PEAK1	0.115	0	5
0.5*PEAK1	0.115	0	5
0.333*PEAK1	0.324	0	10
0.5*PEAK1	0.324	0	10

TABLE 2

TEST CONDITIONS

NOMINAL SOURCE VOLTAGE	0.115 Vrms
SOURCE IMPEDANCE	<1 Ohm
TUBING	0 mm, excluding receiver tubing
COUPLER CAVITY	IEC60318-4 (GRAS RA0402)

TABLE 3

Knowles reserves the right to make changes to improve reliability and performance of the product.

TENTATIVE

Specifications for laboratory produced samples.

Knowles Corporation

Revision	C.O. #	Implementation Date	Release level	Revision
			DRAFT	1
When test limits are used to establish incoming inspection acceptance/rejection criteria, correlation of test equipment with Knowles is also required for elimination of equipment and test method variation.			Dr by	Date
			Ck by	Date
			App by	Date
Receiver Performance Specification			RAQ-33985-B148	
			Sht 2.1	

This document contains confidential, proprietary, trade secret information of Knowles Electronics, LLC or its affiliated entities.
Any unauthorized use or dissemination is strictly prohibited.

Template Revision

A