

DESIGNED & DIMENSIONED  
IN MILLIMETERS[INCHES]

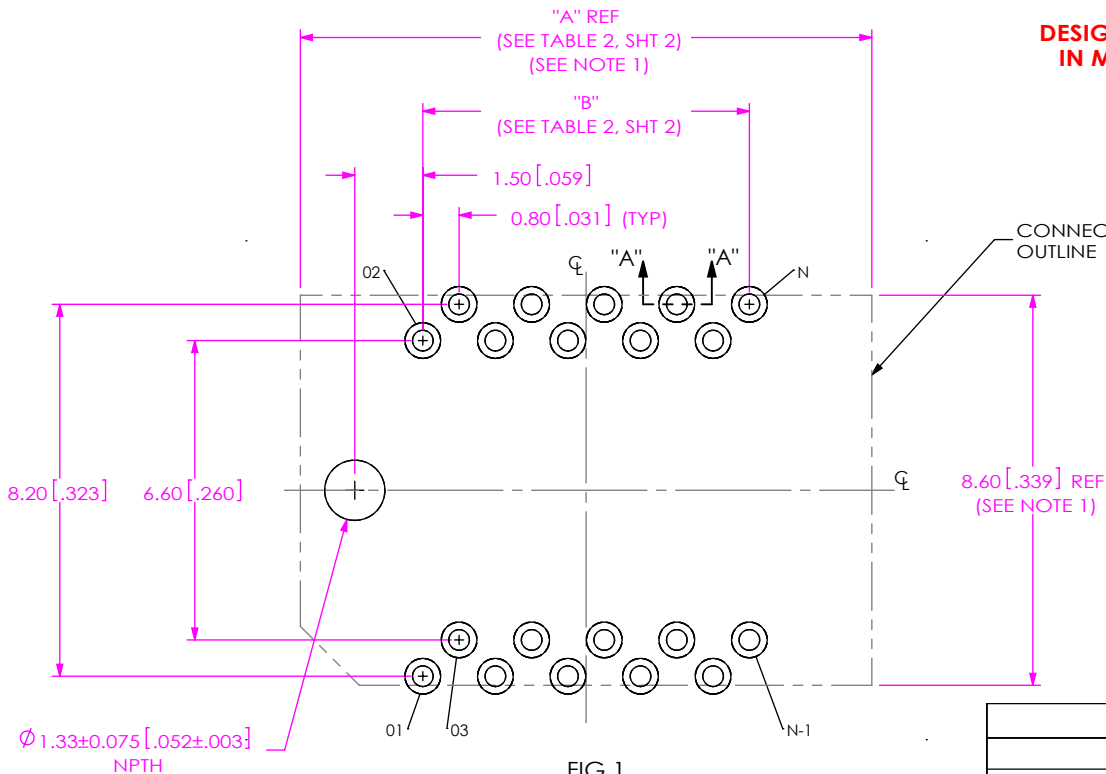


FIG 1  
MEC8-110-02-X-VP-FOOTPRINT SHOWN  
(FOR POSITIONS -10, -20, -30 & \*-35)

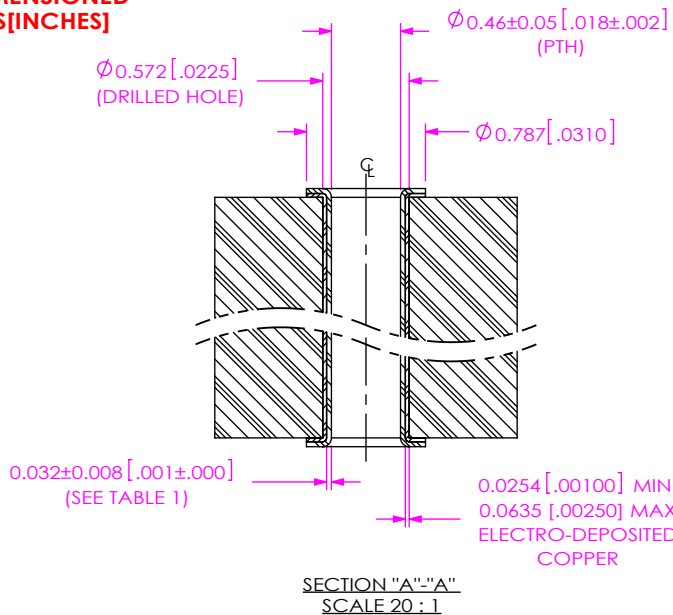


TABLE 1						
	Ni uin (um)		Au uin (um)		Sn uin (um)	
ENIG	100 - 200	(2.50 - 5.00)	2 - 8	(0.05 - 0.20)	NA	NA
HASL/Immersion	NA	NA	NA	NA	100 - 800	(2.50 - 20.00)

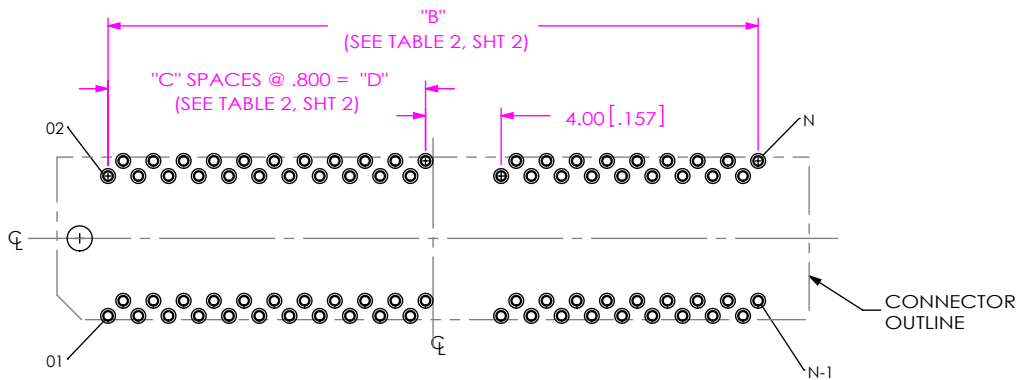


FIG 2  
MEC8-140-02-X-VP-FOOTPRINT SHOWN  
(DIFFERENT AS SHOWN, OTHERWISE SAME AS FIG 1)  
(FOR POSITIONS -40, \*-45, \*-50, \*-60 & \*-70)

NOTES:

1. CONNECTOR ENVELOPE DIMENSIONS. OTHER COMPONENTS PLACED ON PCB SHALL AVOID THIS ZONE.
2. ALL DIMENSIONS ARE SYMMETRIC ABOUT THE CENTERLINE.
3. CONTACT SAMTEC FOR CONNECTOR PRESS FIT INSTRUCTIONS AND REQUIRED FIXTURES.

UNLESS OTHERWISE SPECIFIED,  
DIMENSIONS ARE IN MILLIMETERS.  
TOLERANCES ARE:  
DECIMALS ANGLES  
X.X: ±0.3 [.01] ±5°  
X.XX: ±0.13 [.005]  
X.XXX: ±0.051 [.0020]

PROPRIETARY NOTE  
THIS DOCUMENT CONTAINS CONFIDENTIAL AND PROPRIETARY INFORMATION AND ALL DESIGN, MANUFACTURING, REPRODUCTION, USE, PATENT RIGHTS AND SALES RIGHTS ARE EXPRESSLY RESERVED BY SAMTEC, INC. THIS DOCUMENT SHALL NOT BE DISCLOSED, IN WHOLE OR PART, TO ANY UNAUTHORIZED PERSON OR ENTITY NOR REPRODUCED, TRANSFERRED OR INCORPORATED IN ANY OTHER PROJECT IN ANY MANNER WITHOUT THE EXPRESS WRITTEN CONSENT OF SAMTEC, INC.

**samtec**

520 PARK EAST BLVD, NEW ALBANY, IN 47150  
PHONE: 812-944-6733 FAX: 812-948-5047  
e-Mail info@SAMTEC.com code 55322

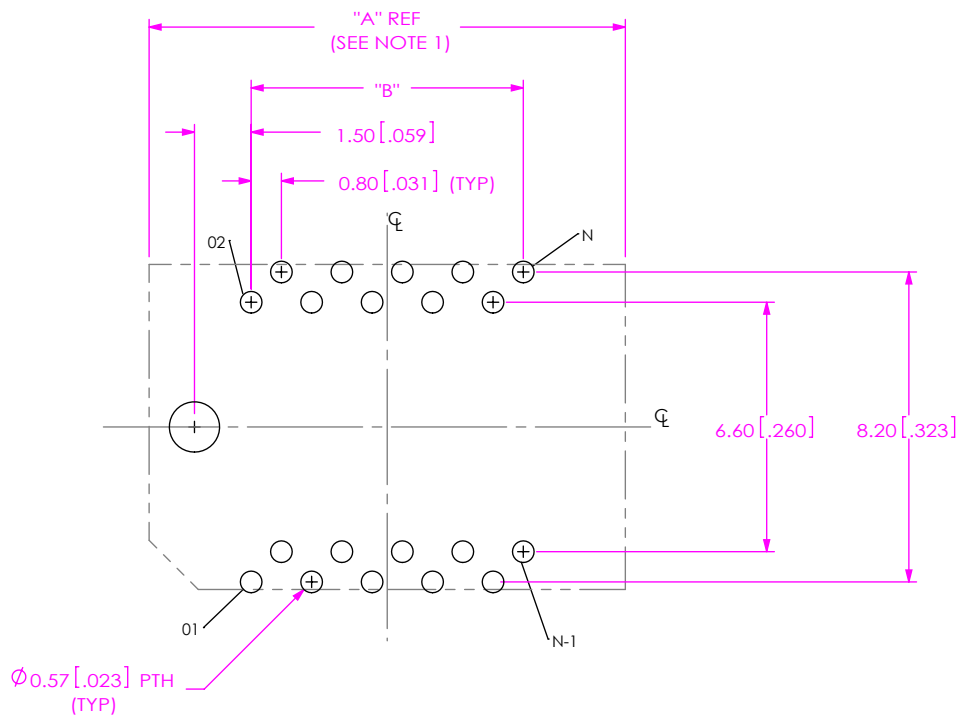


FIG 3  
MEC8-110-02-X-VTX-FOOTPRINT SHOWN  
(DIFFERENT AS SHOWN, OTHERWISE SAME AS FIG 1)  
(FOR POSITIONS -10, -20, -30 & \*-35)  
(NOT TOOLED)

TABLE 2				
No OF POS	"A"	"B"	"C"	"D"
-10	12.60 [0.496]	7.20 [0.283]	N/A	N/A
-20	20.60 [0.811]	15.20 [0.598]	N/A	N/A
-30	28.60 [1.126]	23.20 [0.913]	N/A	N/A
*-35	32.60 [1.283]	27.20 [1.071]	N/A	N/A
-40	39.80 [1.567]	34.40 [1.354]	21	16.80 [0.661]
*-45	43.80 [1.724]	38.40 [1.512]	23	18.40 [0.724]
*-50	47.80 [1.882]	42.40 [1.669]	26	20.80 [0.819]
*-60	55.80 [2.197]	50.40 [1.984]	31	24.80 [0.976]
*-70	63.80 [2.512]	58.40 [2.299]	36	28.80 [1.134]

(\* = NOT TOOLED)

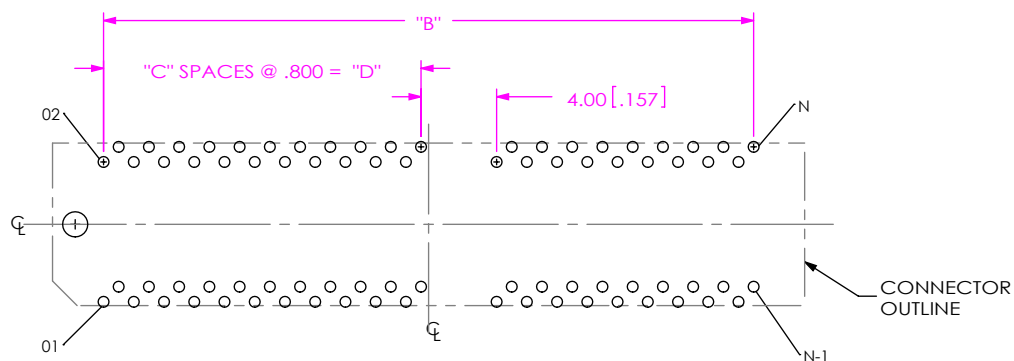


FIG 4  
MEC8-140-02-X-VTX-FOOTPRINT SHOWN  
(DIFFERENT AS SHOWN, OTHERWISE SAME AS FIG 3)  
(FOR POSITIONS -40, \*-45, \*-50, \*-60 & \*-70)  
(NOT TOOLED)

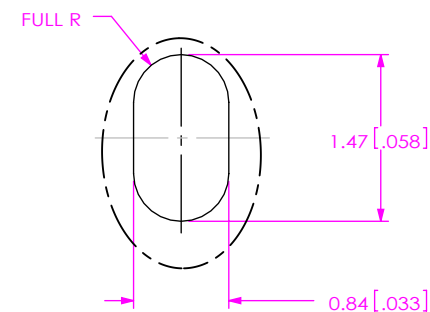
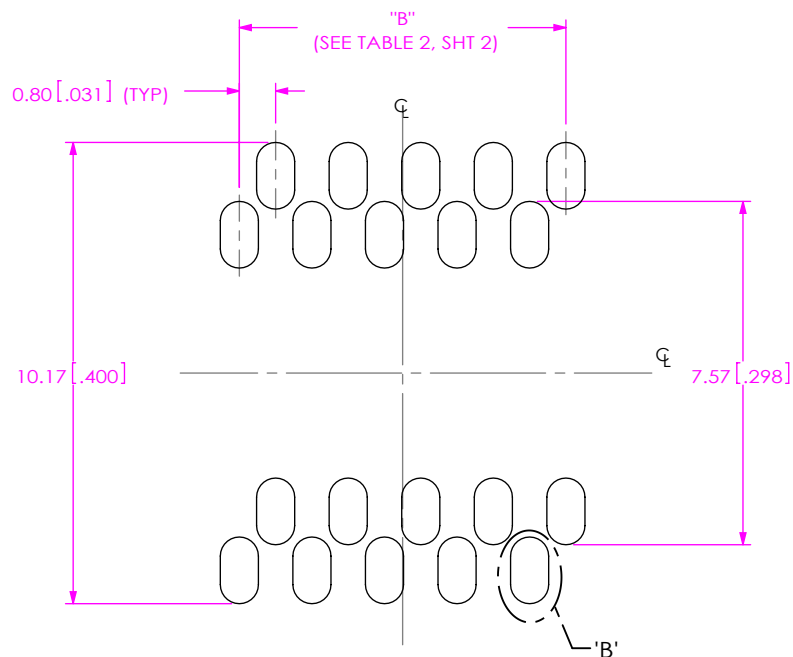
PROPRIETARY NOTE  
THIS DOCUMENT CONTAINS CONFIDENTIAL AND PROPRIETARY INFORMATION AND ALL DESIGN, MANUFACTURING, REPRODUCTION, USE, PATENT RIGHTS AND SALES RIGHTS ARE EXPRESSLY RESERVED BY SAMTEC, INC. THIS DOCUMENT SHALL NOT BE DISCLOSED, IN WHOLE OR PART, TO ANY UNAUTHORIZED PERSON OR ENTITY NOR REPRODUCED, TRANSFERRED OR INCORPORATED IN ANY OTHER PROJECT IN ANY MANNER WITHOUT THE EXPRESS WRITTEN CONSENT OF SAMTEC, INC.

**samtec**

520 PARK EAST BLVD, NEW ALBANY, IN 47150  
PHONE: 812-944-6733 FAX: 812-948-5047  
e-Mail info@SAMTEC.com code 55322

## NOTES:

1. STENCIL TO BE 0.15[.006] THICK.



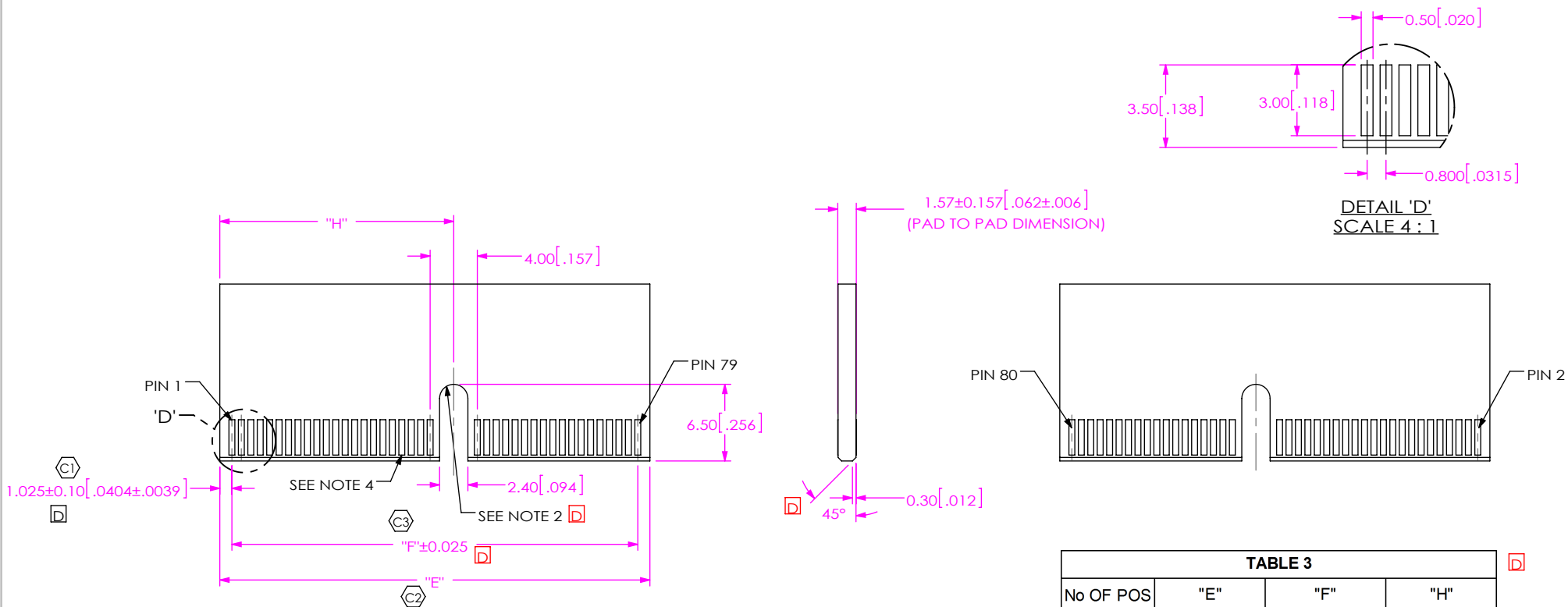
DETAIL 'B'  
SCALE 15:1

FIG 5  
MEC8-110-02-X-VT1-STENCIL SHOWN  
(DIFFERENT AS SHOWN, OTHERWISE SAME AS FIG 3)  
(FOR POSITIONS -10, -20, -30 & \*-35)  
(NOT TOOLED)

• PROPRIETARY NOTE •  
THIS DOCUMENT CONTAINS CONFIDENTIAL AND PROPRIETARY INFORMATION AND ALL DESIGN, MANUFACTURING, REPRODUCTION, USE, PATENT RIGHTS AND SALES RIGHTS ARE EXPRESSLY RESERVED BY SAMTEC, INC. THIS DOCUMENT SHALL NOT BE DISCLOSED, IN WHOLE OR PART, TO ANY UNAUTHORIZED PERSON OR ENTITY NOR REPRODUCED, TRANSFERRED OR INCORPORATED IN ANY OTHER PROJECT IN ANY MANNER WITHOUT THE EXPRESS WRITTEN CONSENT OF SAMTEC, INC.

**samtec**

520 PARK EAST BLVD, NEW ALBANY, IN 47150  
PHONE: 812-944-6733 FAX: 812-948-5047  
e-Mail info@SAMTEC.com code 55322



**TABLE 3**

No OF POS	"E"	"F"	"H"
-10	9.26 [0.365]	7.200 [0.2835]	N/A
-20	17.26 [0.680]	15.200 [0.5984]	N/A
-30	25.26 [0.994]	23.200 [0.9134]	N/A
*-35	29.26 [1.152]	27.200 [1.0709]	N/A
-40	36.45 [1.435]	34.400 [1.3543]	19.83 [0.781]
*-45	40.45 [1.593]	38.400 [1.5118]	21.43 [0.844]
*-50	44.45 [1.750]	42.400 [1.6693]	23.83 [0.938]
*-60	52.45 [2.065]	50.400 [1.9843]	27.83 [1.096]
*-70	60.45 [2.380]	58.400 [2.2992]	31.83 [1.253]

(\* = NOT TOOLED)

## NOTES:

1.  $\odot$  REPRESENTS CRITICAL DIMENSION.
2. -10, -20, -30 AND \*-35 CARDS HAVE NO SLOT.
3. ALL DIMENSIONS ARE SYMMETRIC ABOUT THE CENTERLINE.
4. PLATING TO BE .000030 INCHES GOLD WITH A HARDNESS OF 130-200 KNOOP PER ASTM B 488 TYPE 2, GRADE C.
5. FOR PROPER CONTACT REGISTRATION, PLATING BUS TIE TO BE THE WIDTH OF THE EDGE FINGER.

**PROPRIETARY NOTE**

THIS DOCUMENT CONTAINS CONFIDENTIAL AND PROPRIETARY INFORMATION AND ALL DESIGN, MANUFACTURING, REPRODUCTION, USE, PATENT RIGHTS AND SALES RIGHTS ARE EXPRESSLY RESERVED BY SAMTEC, INC. THIS DOCUMENT SHALL NOT BE DISCLOSED, IN WHOLE OR PART, TO ANY UNAUTHORIZED PERSON OR ENTITY NOR REPRODUCED, TRANSFERRED OR INCORPORATED IN ANY OTHER PROJECT IN ANY MANNER WITHOUT THE EXPRESS WRITTEN CONSENT OF SAMTEC, INC.

**samtec**

520 PARK EAST BLVD, NEW ALBANY, IN 47150  
PHONE: 812-944-6733 FAX: 812-948-5047  
e-Mail info@SAMTEC.com code 55322