

FIG 1
MEC1-160-02-X-D-EMX
(POLARIZED OPTION SHOWN)

TABLE 2	
EDGE MOUNT OPTION	"C"
-EM1	.031±.003 [0.79±0.08]
-EM2	.062±.006 [1.57±0.15]

H

UNLESS OTHERWISE SPECIFIED,
DIMENSIONS ARE IN INCHES.
TOLERANCES ARE:
DECIMALS ANGLES
.XX: ±.01 [.3] 5°
.XXX: ±.005 [.13]
.XXXX: ±.0020 [.051]

PROPRIETARY NOTE
THIS DOCUMENT CONTAINS CONFIDENTIAL AND
PROPRIETARY INFORMATION AND ALL DESIGN,
MANUFACTURING, REPRODUCTION, USE, PATENT RIGHTS
AND SALES RIGHTS ARE EXPRESSLY RESERVED BY SAMTEC,
INC. THIS DOCUMENT SHALL NOT BE DISCLOSED, IN WHOLE
OR PART, TO ANY UNAUTHORIZED PERSON OR ENTITY NOR
REPRODUCED, TRANSFERRED OR INCORPORATED IN ANY
OTHER PROJECT IN ANY MANNER WITHOUT THE EXPRESS
WRITTEN CONSENT OF SAMTEC, INC.

samtec

520 PARK EAST BLVD, NEW ALBANY, IN 47150
PHONE: 812-944-6733 FAX: 812-948-5047
e-Mail info@SAMTEC.com code 55322

NOTE:
STENCIL TO BE .0060[.152] THICK.

H

TABLE 1				
POSITION	"A"	"B"	"E"	POSITIONS POLARIZED
-05	N/A	N/A	.1575 [4.000]	3, 4
-08	.0393 [.999]	N/A	.2756 [7.000]	5, 6
-20	.2362 [6.000]	N/A	.7480 [19.000]	15, 16
-30	.3543 [9.000]	N/A	1.1417 [29.000]	21, 22
-40	.5512 [14.001]	N/A	1.5354 [39.000]	31, 32
-50	.7480 [19.000]	N/A	1.9291 [49.000]	41, 42
-60	.5512 [14.001]	1.1811 [30.000]	2.3228 [59.000]	31, 32, 63, & 64
-70	.9842 [24.999]	2.2047 [56.000]	2.7165 [69.000]	53, 54, 115, & 116

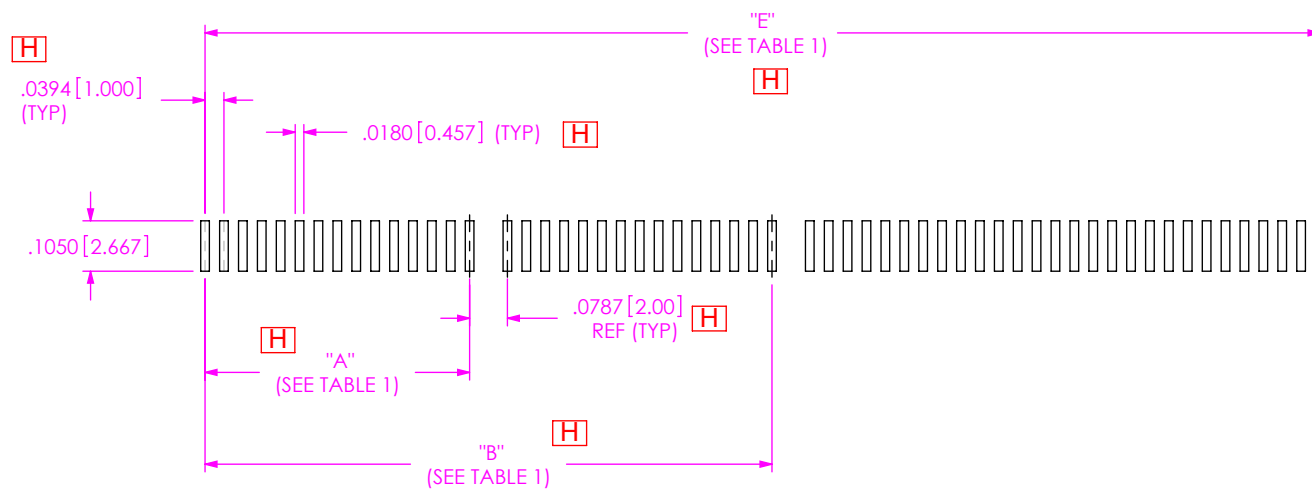


FIG 2
MEC1-160-02-X-D-EMX
(POLARIZED OPTION SHOWN)

• PROPRIETARY NOTE •
THIS DOCUMENT CONTAINS CONFIDENTIAL AND PROPRIETARY INFORMATION AND ALL DESIGN, MANUFACTURING, REPRODUCTION, USE, PATENT RIGHTS AND SALES RIGHTS ARE EXPRESSLY RESERVED BY SAMTEC, INC. THIS DOCUMENT SHALL NOT BE DISCLOSED, IN WHOLE OR PART, TO ANY UNAUTHORIZED PERSON OR ENTITY NOR REPRODUCED, TRANSFERRED OR INCORPORATED IN ANY OTHER PROJECT IN ANY MANNER WITHOUT THE EXPRESS WRITTEN CONSENT OF SAMTEC, INC.

samtec

520 PARK EAST BLVD, NEW ALBANY, IN 47150
PHONE: 812-944-6733 FAX: 812-948-5047
e-Mail info@SAMTEC.com code 55322

TABLE 4			
POSITION	"F"	"G" (CARD SLOT 1)	"H" (CARD SLOT 2)
-05	.266 [6.75]	.0935 [2.375]	N/A
-08	.384 [9.75]	.1328 [3.373]	N/A
-20	.857 [21.76]	.3297 [8.374]	N/A
-30	1.251 [31.77]	.4478 [11.374]	N/A
-40	1.645 [41.78]	.6447 [16.375]	N/A
-50	2.039 [51.79]	.8415 [21.374]	N/A
-60	2.433 [61.79]	.6447 [16.375]	1.2746 [32.375]
-70	2.827 [71.80]	1.0777 [27.374]	2.2982 [58.374]

H

NOTES:

1. -60 AND -70 ARE THE ONLY TWO CARDS THAT HAVE TWO SLOTS.
2. MIRROR IMAGE FOOTPRINT ON THE OTHER SIDE OF PCB.
3. FOR NON-POLARIZED OPTION, REPLACE SLOTS WITH TRACES.
4. ALL DIMENSIONS ARE SYMMETRIC ABOUT THE CENTERLINE.
5. POSITIONS -05, -08, -20, -30 ARE POLARIZED UNLESS OTHERWISE NOTED WITH OPTION -NP.
6. PLATING TO BE .000030 INCHES GOLD WITH HARDNESS OF 130-200 KNOOP PER ASTM B488 TYPE 2, GRADE C.
7. FOR PROPER CONTACT REGISTRATION, PLATING BUS TIE TO BE THE WIDTH OF THE EDGE FINGER.

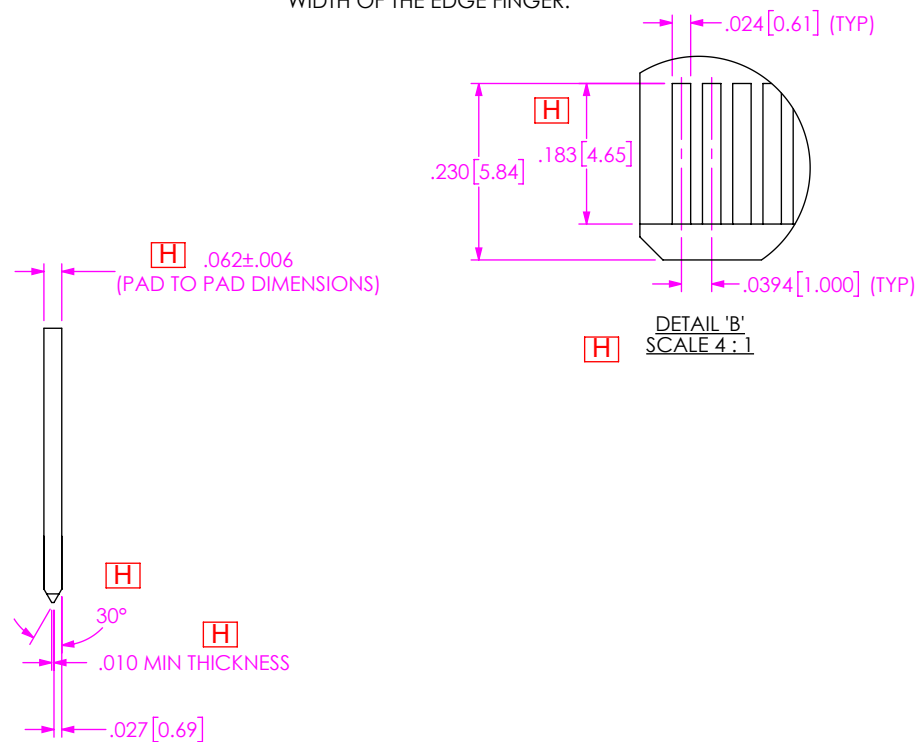
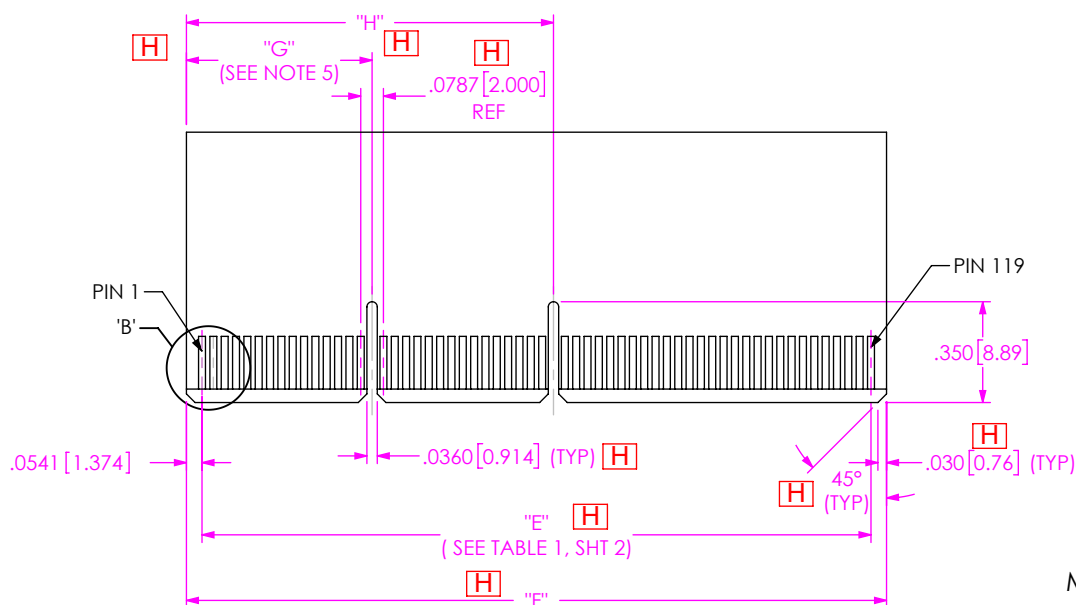
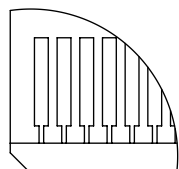
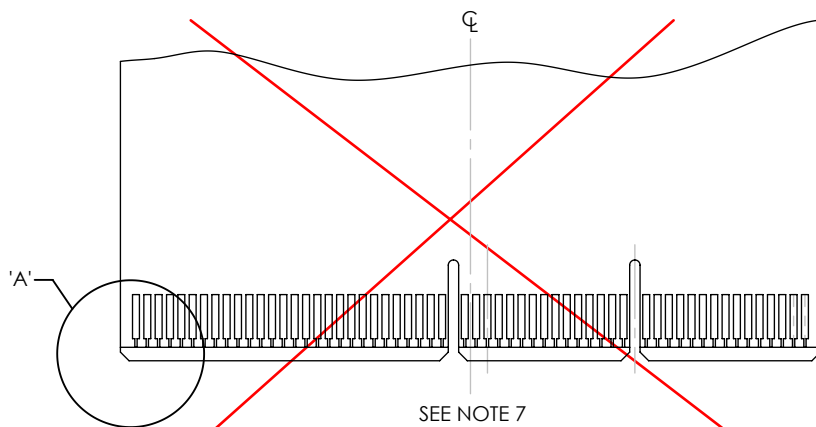


FIG 3
MATING CARD FOR MEC1-160-02-X-D-EMX



DETAIL 'A'
SCALE 3:1



PROPRIETARY NOTE
THIS DOCUMENT CONTAINS CONFIDENTIAL AND PROPRIETARY INFORMATION AND ALL DESIGN, MANUFACTURING, REPRODUCTION, USE, PATENT RIGHTS AND SALES RIGHTS ARE EXPRESSLY RESERVED BY SAMTEC, INC. THIS DOCUMENT SHALL NOT BE DISCLOSED, IN WHOLE OR PART, TO ANY UNAUTHORIZED PERSON OR ENTITY NOR REPRODUCED, TRANSFERRED OR INCORPORATED IN ANY OTHER PROJECT IN ANY MANNER WITHOUT THE EXPRESS WRITTEN CONSENT OF SAMTEC, INC.

samtec

520 PARK EAST BLVD, NEW ALBANY, IN 47150
PHONE: 812-944-6733 FAX: 812-948-5047
e-Mail info@SAMTEC.com code 55322