

DESIGNED & DIMENSIONED IN MILLIMETERS [INCH]

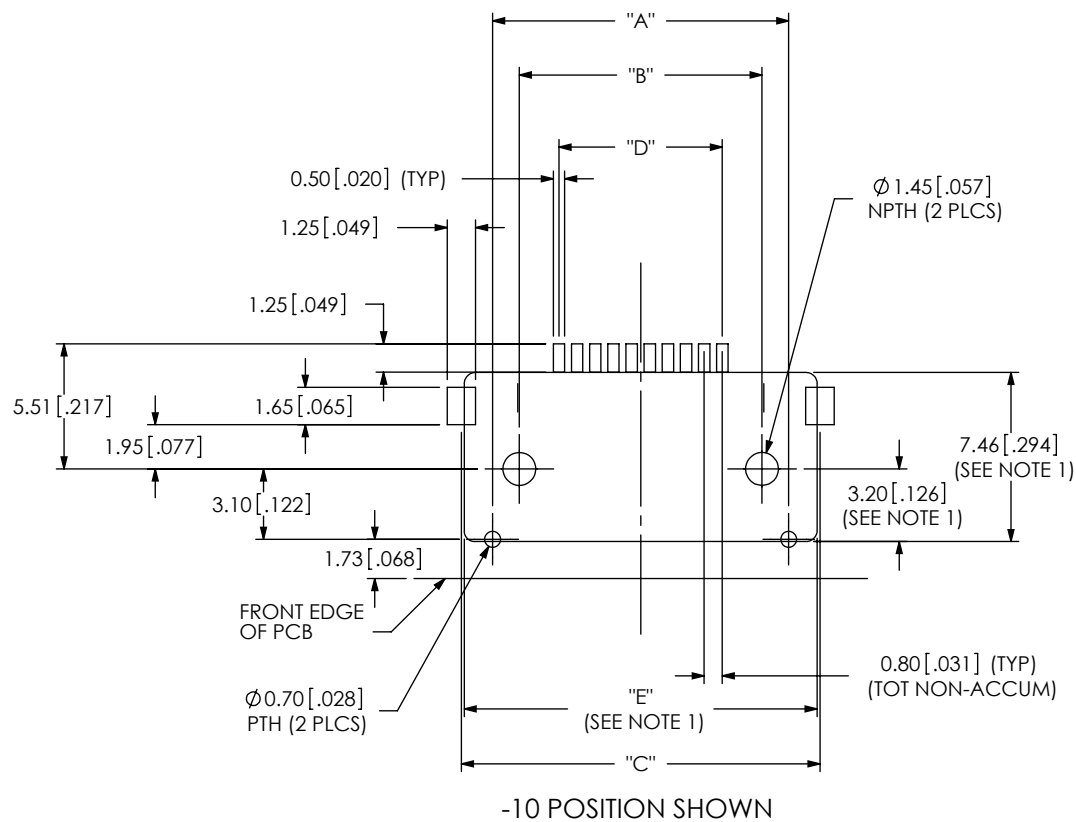


TABLE 1

POSITION	"A"	"B"	"C"	"D"	"E"
*-05	9.06 [.357]	6.70 [.264]	11.81 [.465]	3.20 [.126]	11.56 [.455]
-10	13.06 [.514]	10.70 [.421]	15.81 [.622]	7.20 [.283]	15.56 [.613]
*-15	17.06 [.672]	14.70 [.579]	19.81 [.780]	11.20 [.441]	19.56 [.770]
-20	21.06 [.829]	18.70 [.736]	23.81 [.937]	15.20 [.599]	23.56 [.928]
*-25	25.06 [.987]	22.70 [.894]	27.81 [1.095]	19.20 [.756]	27.56 [1.085]
-30	29.06 [1.144]	26.70 [1.051]	31.81 [1.252]	23.20 [.913]	31.56 [1.243]
*-35	33.06 [1.302]	30.70 [1.209]	35.81 [1.410]	27.20 [1.071]	35.56 [1.400]
*-40	37.06 [1.459]	34.70 [1.366]	39.81 [1.567]	31.20 [1.228]	39.56 [1.557]

(* = NOT TOOLED)

NOTES:

1. CONNECTOR ENVELOPE DIMENSIONS: OTHER COMPONENTS PLACED ON PCB SHALL AVOID THIS ZONE.
2. ALL DIMENSIONS ARE SYMMETRIC ABOUT THE CENTERLINE.
3. NOT RECOMMENDED FOR INVERTED REFLOW SOLDER.

UNLESS OTHERWISE SPECIFIED,
DIMENSIONS ARE IN MILLIMETERS.
TOLERANCES ARE:
DECIMALS
X: ±.3[.01]
XX: ±.10[.004]
XXX: ±.05[.0020]

PROPRIETARY NOTE

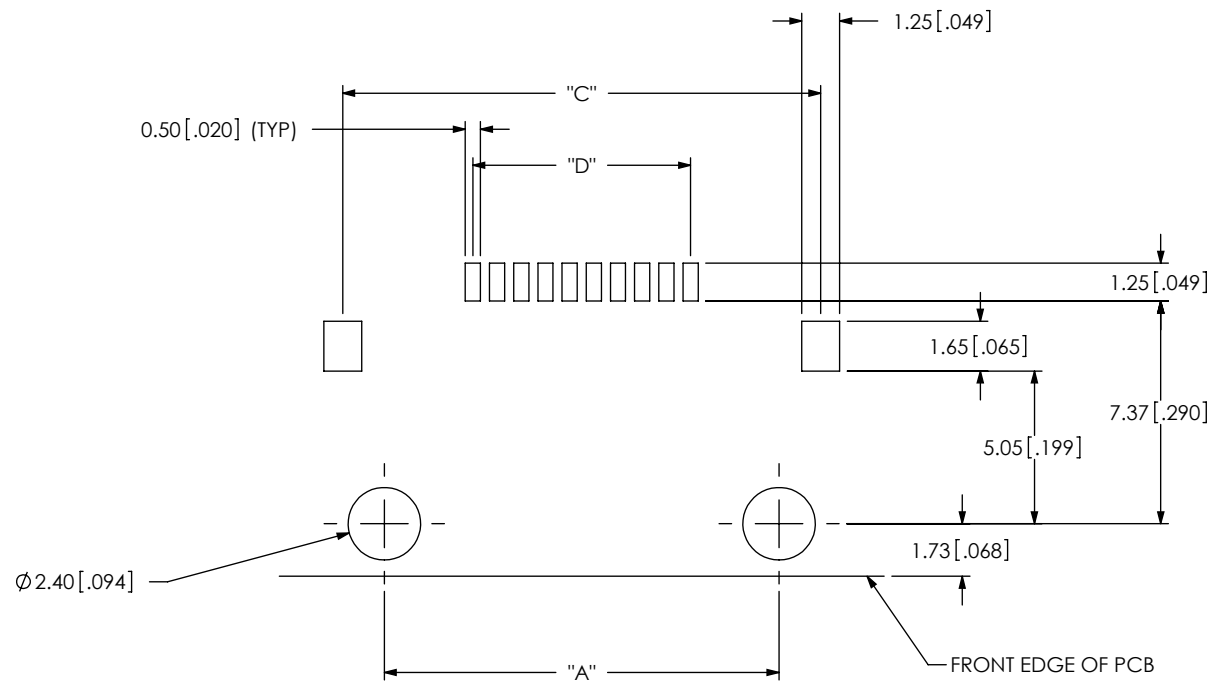
THIS DOCUMENT CONTAINS INFORMATION
CONFIDENTIAL AND PROPRIETARY TO
SAMTEC, INC. AND SHALL NOT BE REPRODUCED
OR TRANSFERRED TO OTHER DOCUMENTS OR
DISCLOSED TO OTHERS OR USED FOR ANY
PURPOSE OTHER THAN THAT WHICH IT WAS
OBTAINED WITHOUT THE EXPRESSED WRITTEN
CONSENT OF SAMTEC, INC.

samtec

520 PARK EAST BLVD, NEW ALBANY, IN 47150
PHONE: 812-944-6733 FAX: 812-948-5047
e-Mail: info@SAMTEC.com code: 55322

DESIGNED & DIMENSIONED IN MILLIMETERS [INCH]

STENCIL TO BE 0.15[.006] THICK.

-10 POSITION SHOWN

UNLESS OTHERWISE SPECIFIED,
DIMENSIONS ARE IN MILLIMETERS.
TOLERANCES ARE:
DECIMALS
X: ± 0.1
XX: ± 0.10
XXX: ± 0.05

PROPRIETARY NOTE

THIS DOCUMENT CONTAINS INFORMATION
CONFIDENTIAL AND PROPRIETARY TO
SAMTEC, INC. AND SHALL NOT BE REPRODUCED
OR TRANSFERRED TO OTHER DOCUMENTS OR
DISCLOSED TO OTHERS OR USED FOR ANY
PURPOSE OTHER THAN THAT WHICH IT WAS
OBTAINED WITHOUT THE EXPRESSED WRITTEN
CONSENT OF SAMTEC, INC.

samtec

520 PARK EAST BLVD, NEW ALBANY, IN 47150
PHONE: 812-944-6733 FAX: 812-948-5047
e-Mail: info@SAMTEC.com code: 55322