

FIG 1
EBTF-6-12-2.0-X-RA-X FOOTPRINT SHOWN

TABLE 1		
TIN (IMMERSION)	Cu	0.020-0.069 [.0008-.0027]
	Sn	0.001-0.002 [.00004-.00008]

COLUMNS	"A"	"B"	"C"
-06	12.90 [0.508]	10.00 [0.394]	18.85 [0.742]
-08	16.90 [0.665]	14.00 [0.551]	22.85 [0.900]
-10	20.90 [0.823]	18.00 [0.709]	26.85 [1.057]
-12	24.90 [0.980]	22.00 [0.866]	30.85 [1.215]

NOTES:

1. CONNECTOR ENVELOPE DIMENSIONS. OTHER COMPONENTS PLACED ON PCB SHALL AVOID THIS ZONE.
2. COPPER PLATING THICKNESS MAY NOT VARY BY MORE THAN 0.02[.001] WITHIN ANY VIA.
3. CONTACT SAMTEC FOR CONNECTOR PRESS FIT INSTRUCTIONS AND REQUIRED FIXTURES.
4. LEFT AND RIGHT GUIDANCE CONNECTORS INCLUDE A METAL HOLD-DOWN INSERT AND UTILIZE M2 SCREWS TO SECURE THE CONNECTOR TO THE PCB. DO NOT PUT TOP LEVEL TRACES OR VIAS IN THESE KEEP OUT ZONES. IF SCREWS HAVE AN OUTSIDE DIAMETER LARGER THAN 5.0MM, THEN ADDITIONAL CLEARANCE WILL BE REQUIRED FOR THE BOTTOM OF THE PCB.
5. FOR -1 STANDARD PIN CONFIGURATION, ALL GROUNDS WITHIN A COLUMN ARE COMMON.

PROPRIETARY NOTE

THIS DOCUMENT CONTAINS CONFIDENTIAL AND PROPRIETARY INFORMATION AND ALL DESIGN, MANUFACTURING, REPRODUCTION, USE, PATENT RIGHTS AND SALES RIGHTS ARE EXPRESSLY RESERVED BY SAMTEC, INC. THIS DOCUMENT SHALL NOT BE DISCLOSED, IN WHOLE OR PART, TO ANY UNAUTHORIZED PERSON OR ENTITY NOR REPRODUCED, TRANSFERRED OR INCORPORATED IN ANY OTHER PROJECT IN ANY MANNER WITHOUT THE EXPRESS WRITTEN CONSENT OF SAMTEC, INC.

samtec

520 PARK EAST BLVD, NEW ALBANY, IN 47150
PHONE: 812-944-6733 FAX: 812-948-5047
e-Mail info@SAMTEC.com code 55322

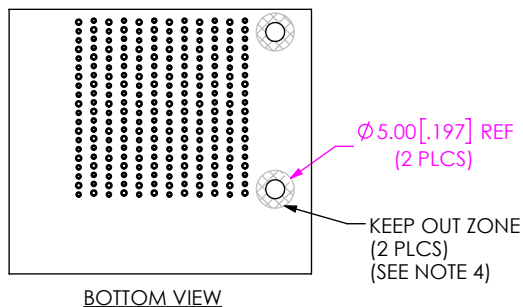
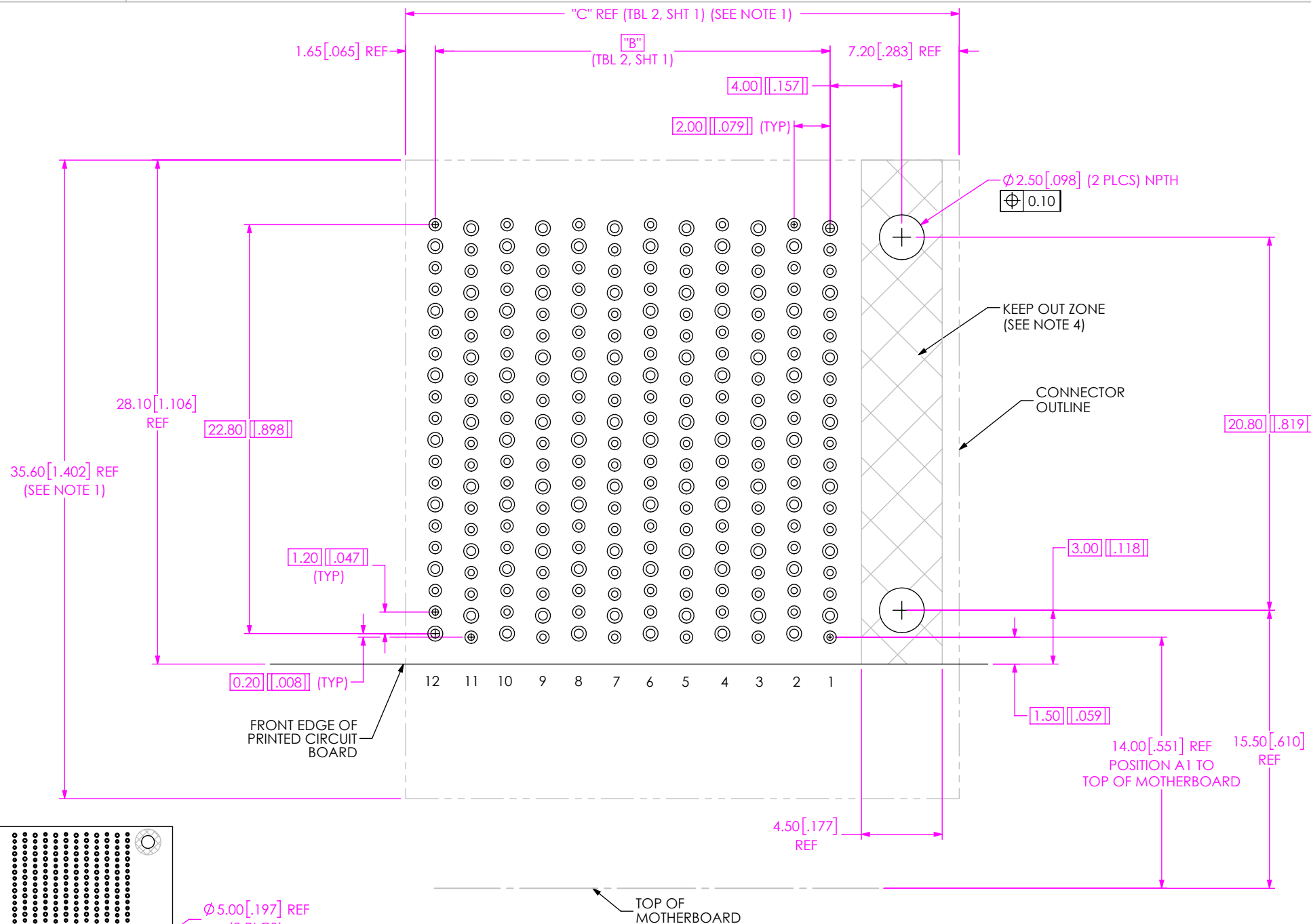


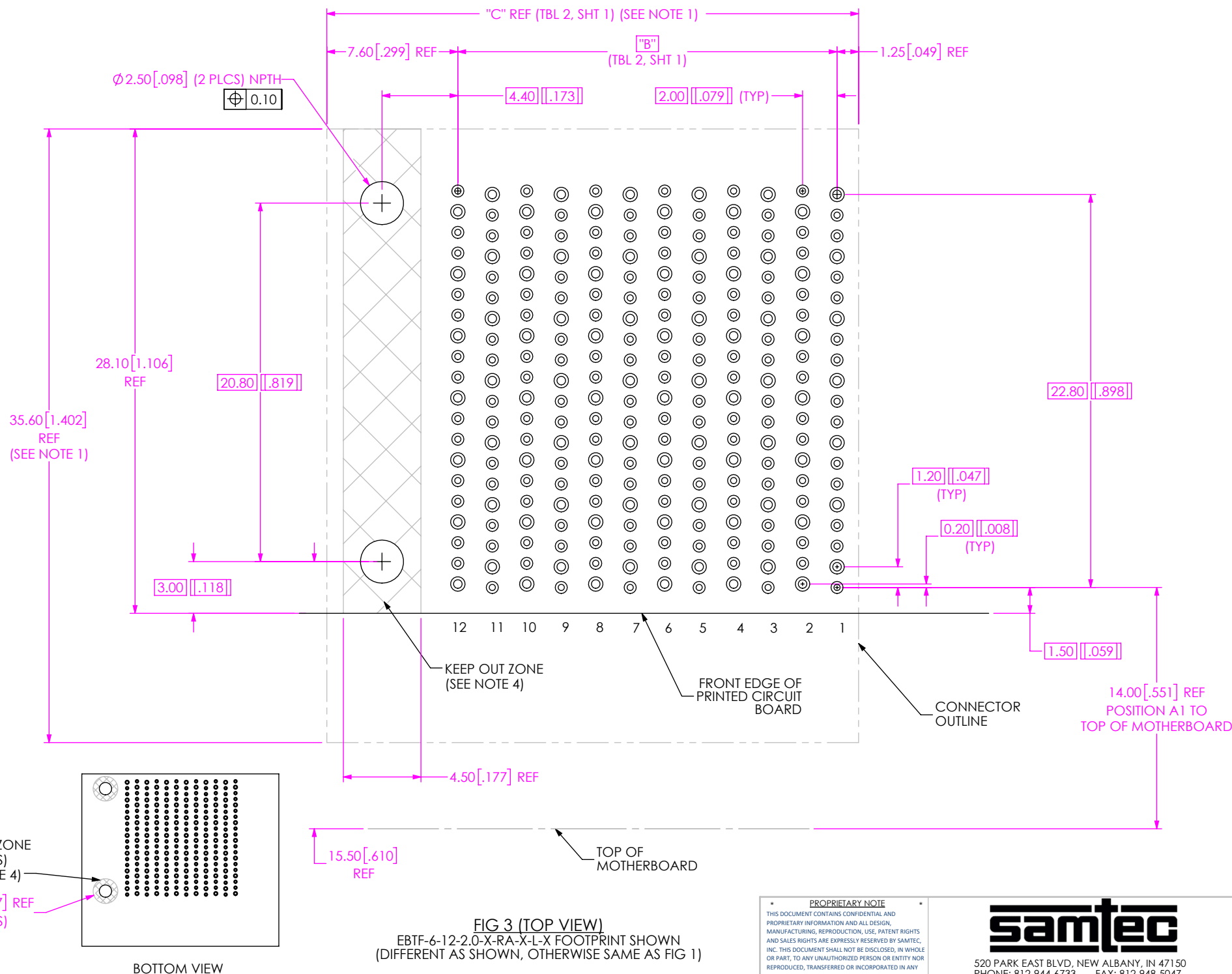
FIG 2 (TOP VIEW)
EBTF-6-12-2.0-X-RA-X-R-X FOOTPRINT SHOWN
(DIFFERENT AS SHOWN, OTHERWISE SAME AS FIG 1)

F:\dwg\misc\mktg\footprint\EBTF-6-XX-2.0-X-RA-X-X-X-FOOTPRINT.SLDRW

PROPRIETARY NOTE
THIS DOCUMENT CONTAINS CONFIDENTIAL AND PROPRIETARY INFORMATION AND ALL DESIGN, MANUFACTURING, REPRODUCTION, USE, PATENT RIGHTS AND SALES RIGHTS ARE EXPRESSLY RESERVED BY SAMTEC, INC. THIS DOCUMENT SHALL NOT BE DISCLOSED, IN WHOLE OR PART, TO ANY UNAUTHORIZED PERSON OR ENTITY NOR REPRODUCED, TRANSFERRED OR INCORPORATED IN ANY OTHER PROJECT IN ANY MANNER WITHOUT THE EXPRESS WRITTEN CONSENT OF SAMTEC, INC.

samtec

520 PARK EAST BLVD, NEW ALBANY, IN 47150
PHONE: 812-944-6733 FAX: 812-948-5047
e-Mail: info@SAMTEC.com code 55322



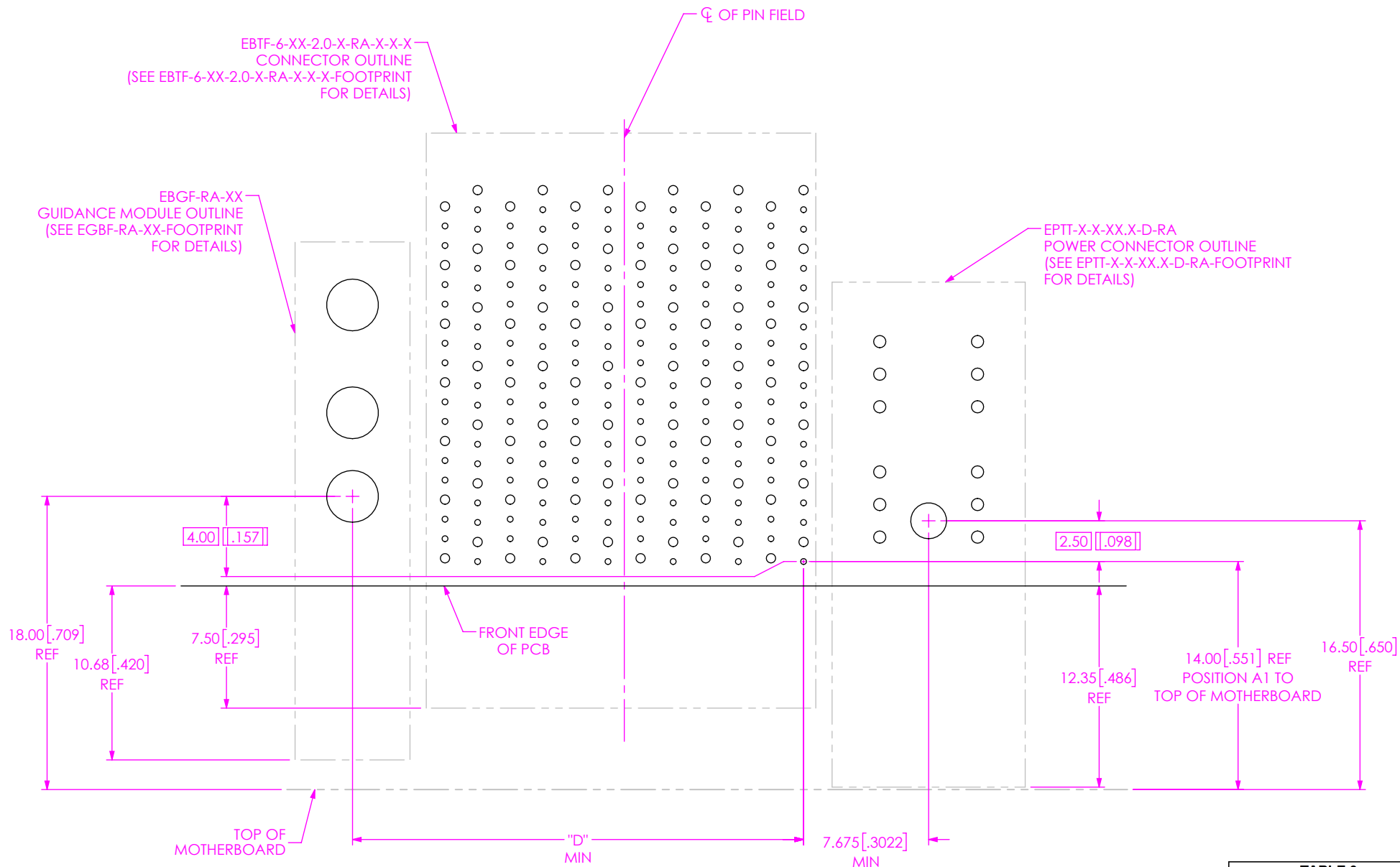


FIG 4
SIGNAL, POWER AND GUIDANCE COMBO
EGBF-RA-XX-FOOTPRINT, EPIT-X-X-XX.X-D-RA-FOOTPRINT
AND EBTF-6-12-2.0-X-RA-X-X-X-FOOTPRINT SHOWN

TABLE 3	
COLUMNS	"D"
-06	15.675 [0.6171]
-08	19.675 [0.7746]
-10	23.675 [0.9321]
-12	27.675 [1.0896]

PROPRIETARY NOTE
THIS DOCUMENT CONTAINS CONFIDENTIAL AND PROPRIETARY INFORMATION AND ALL DESIGN, MANUFACTURING, REPRODUCTION, USE, PATENT RIGHTS AND SALES RIGHTS ARE EXPRESSLY RESERVED BY SAMTEC, INC. THIS DOCUMENT SHALL NOT BE DISCLOSED, IN WHOLE OR PART, TO ANY UNAUTHORIZED PERSON OR ENTITY NOR REPRODUCED, TRANSFERRED OR INCORPORATED IN ANY OTHER PROJECT IN ANY MANNER WITHOUT THE EXPRESS WRITTEN CONSENT OF SAMTEC, INC.

samtec

520 PARK EAST BLVD, NEW ALBANY, IN 47150
PHONE: 812-944-6733 FAX: 812-948-5047
e-Mail info@SAMTEC.com code 55322

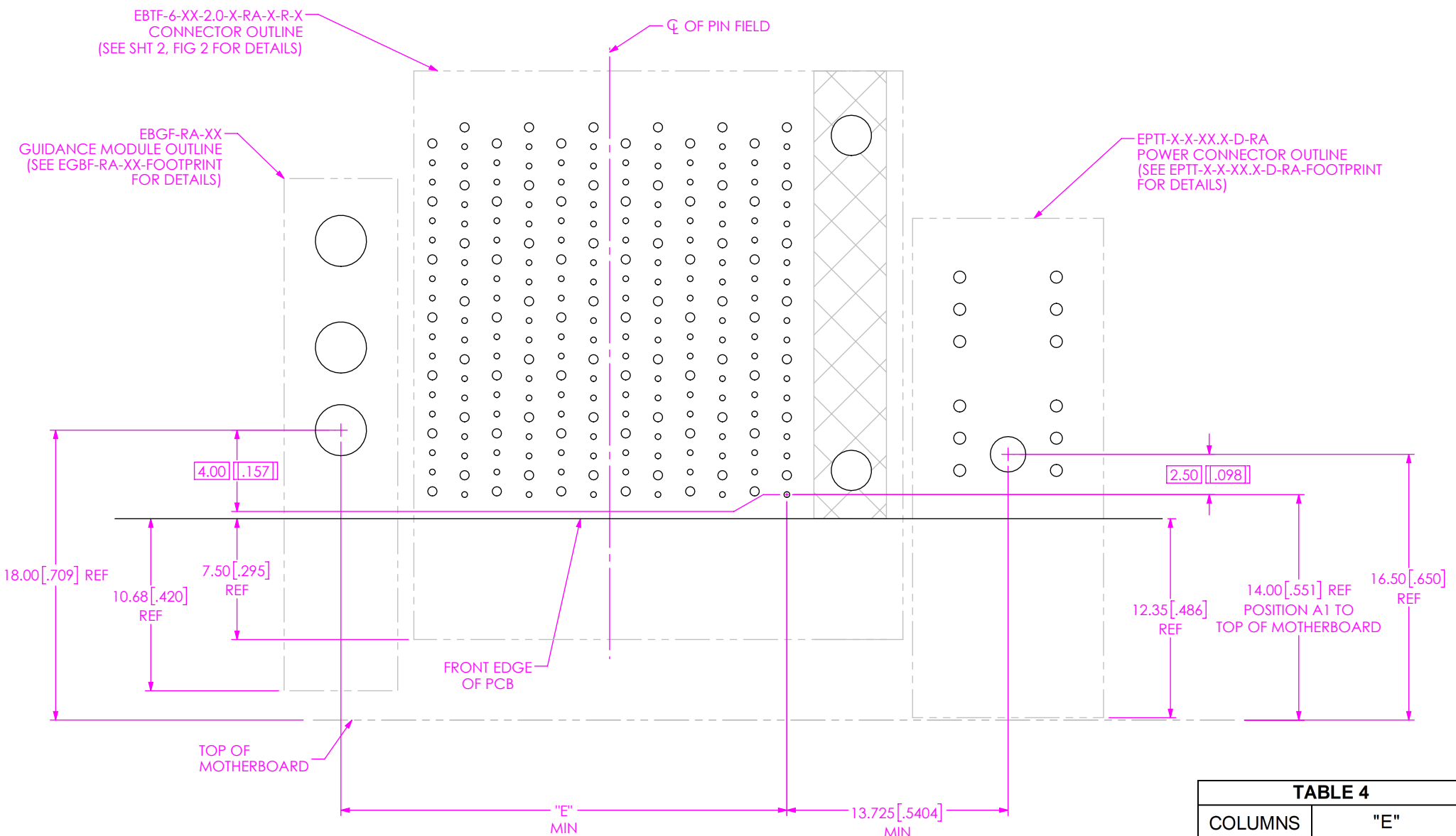


FIG 5
SIGNAL, POWER, INTERNAL (-R) AND EXTERNAL GUIDANCE COMBO
EBGf-RA-XX-FOOTPRINT, EPTt-X-X-XX.X-D-RA-FOOTPRINT
AND EBTf-6-12-2.0-X-RA-X-R-X-FOOTPRINT SHOWN

TABLE 4	
COLUMNS	"E"
-06	15.675 [0.6171]
-08	19.675 [0.7746]
-10	23.675 [0.9321]
-12	27.675 [1.0896]

PROPRIETARY NOTE
THIS DOCUMENT CONTAINS CONFIDENTIAL AND
PROPRIETARY INFORMATION AND ALL DESIGN,
MANUFACTURING, REPRODUCTION, USE, PATENT RIGHTS
AND SALES RIGHTS ARE EXPRESSLY RESERVED BY SAMTEC,
INC. THIS DOCUMENT SHALL NOT BE DISCLOSED, IN WHOLE
OR PART, TO ANY UNAUTHORIZED PERSON OR ENTITY NOR
REPRODUCED, TRANSFERRED OR INCORPORATED IN ANY
OTHER PROJECT IN ANY MANNER WITHOUT THE EXPRESS
WRITTEN CONSENT OF SAMTEC, INC.

samtec

520 PARK EAST BLVD, NEW ALBANY, IN 47150
PHONE: 812-944-6733 FAX: 812-948-5047
e-Mail info@SAMTEC.com code 55322

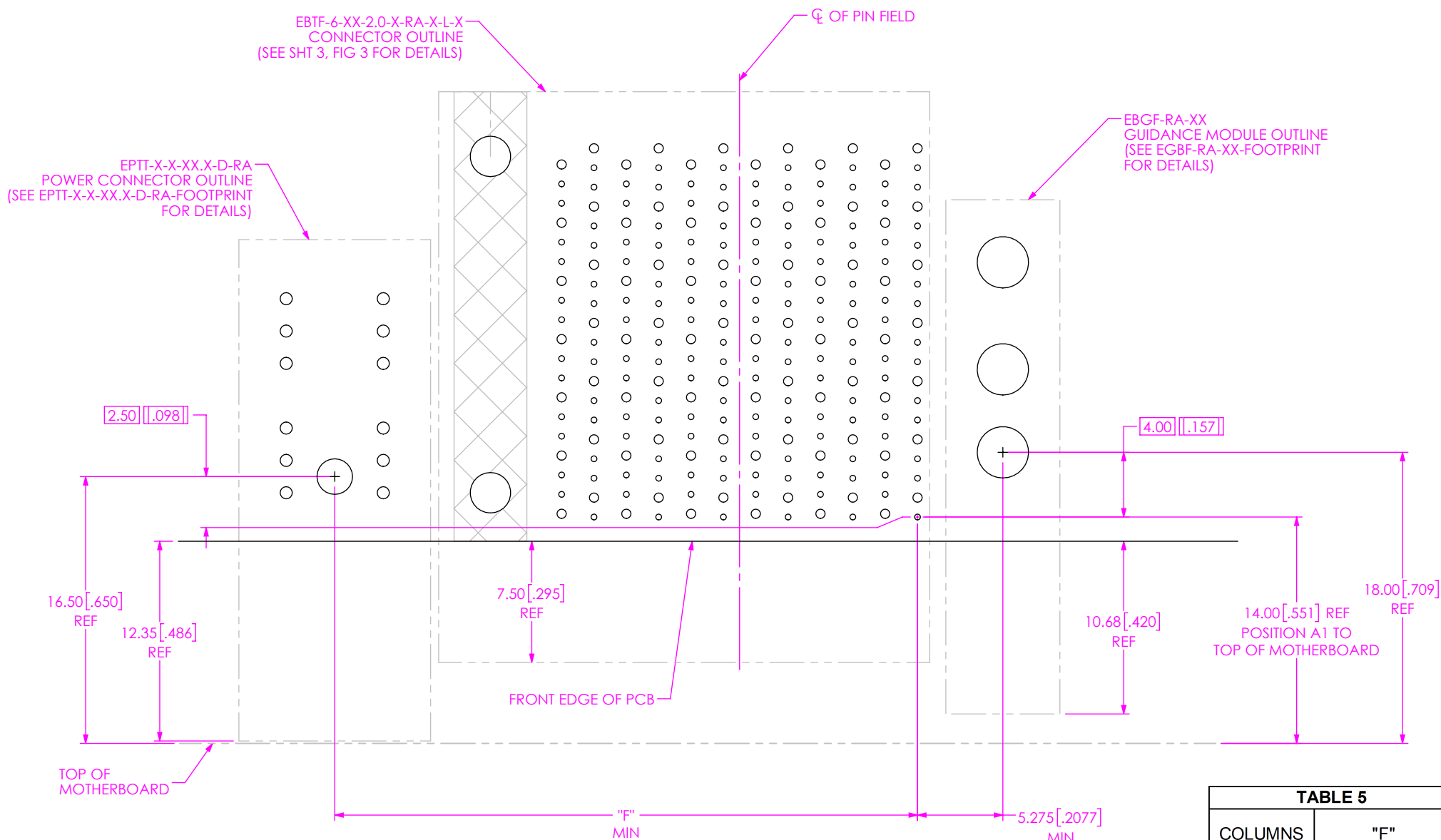


FIG 6
SIGNAL, POWER, INTERNAL (-L) AND EXTERNAL GUIDANCE COMBO
EGBF-RA-XX-FOOTPRINT, EPTT-X-X-XX.X-D-RA-FOOTPRINT
AND EBTF-6-12-2.0-X-RA-X-L-X-FOOTPRINT SHOWN

TABLE 5	
COLUMNS	"F"
-06	24.025 [0.9459]
-08	28.025 [1.1033]
-10	32.025 [1.2608]
-12	36.025 [1.4183]

PROPRIETARY NOTE
THIS DOCUMENT CONTAINS CONFIDENTIAL AND PROPRIETARY INFORMATION AND ALL DESIGN, MANUFACTURING, REPRODUCTION, USE, PATENT RIGHTS AND SALES RIGHTS ARE EXPRESSLY RESERVED BY SAMTEC, INC. THIS DOCUMENT SHALL NOT BE DISCLOSED, IN WHOLE OR PART, TO ANY UNAUTHORIZED PERSON OR ENTITY NOR REPRODUCED, TRANSFERRED OR INCORPORATED IN ANY OTHER PROJECT IN ANY MANNER WITHOUT THE EXPRESS WRITTEN CONSENT OF SAMTEC, INC.

samtec

520 PARK EAST BLVD, NEW ALBANY, IN 47150
PHONE: 812-944-6733 FAX: 812-948-5047
e-Mail info@SAMTEC.com code 55322