

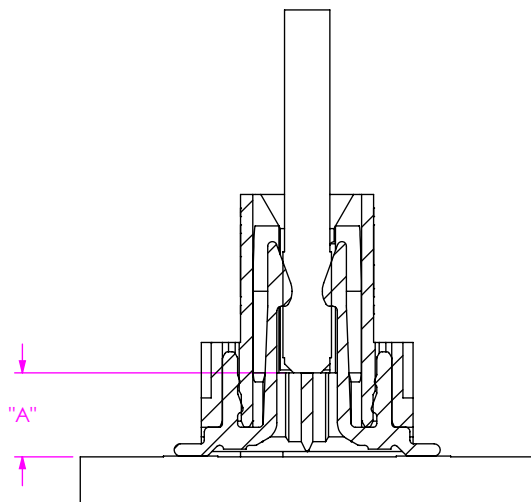
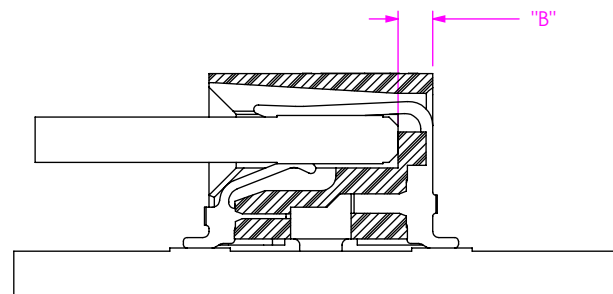
DESIGNED & DIMENSIONED
IN MILLIMETERS[INCHES]DO NOT
SCALE FROM
THIS PRINTFIGURE 1
MEC6-DV MATEDFIGURE 2
MEC6-RA MATED

TABLE 1

	Edge of Card to Board Dimension ("A")	Edge of Card to Connector Edge Dimension ("B")	Max Edge of Card to Board Dimension	Max Edge of Card to Connector Edge Dimension	Min. Contact Wipe	Max. Contact Wipe
FIG 1) MEC6	2.92 [0.115]	N/A	Dimension "A" + 1.65 [0.065]	N/A	0.38 [0.015]	2.03 [0.080]
FIG 2) MEC6-RA	N/A	1.17 [0.046]	N/A	Dimension "B" + 2.16 [0.085]	0.38 [0.015]	2.54 [0.100]

NOTES:

1. ALL DIMENSIONS BASED ON NOMINAL VALUES FOR SAMTEC RECOMMENDED PCB LAYOUTS.
2. ALTHOUGH MAX DIMENSIONS ARE LISTED SAMTEC RECOMMENDS FULLY MATING COMPONENTS.
3. MAXIMUM ALLOWABLE ANGLE AT FULLY MATED NOMINAL CONDITIONS

PROPRIETARY NOTE

THIS DOCUMENT CONTAINS INFORMATION
CONFIDENTIAL AND PROPRIETARY TO
SAMTEC, INC. AND SHALL NOT BE REPRODUCED
OR TRANSFERRED TO OTHER DOCUMENTS OR
DISCLOSED TO OTHERS OR USED FOR ANY
PURPOSE OTHER THAN THAT WHICH IT WAS
OBTAINED WITHOUT THE EXPRESSED WRITTEN
CONSENT OF SAMTEC, INC.

samtec

520 PARK EAST BLVD., NEW ALBANY, IN 47150
PHONE: 812-944-6733 FAX: 812-948-5047
e-Mail info@SAMTEC.com code 55322

FIGURE 3
MEC6-DV MATED

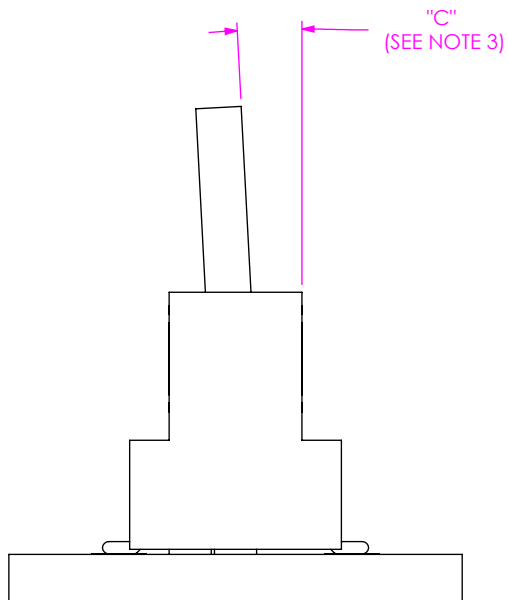


FIGURE 4
MEC6-RA MATED

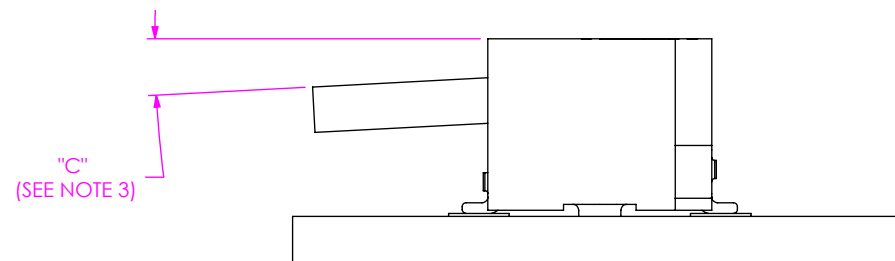


TABLE 2	
	Maximum Allowable Angle at Nominal Conditions ("C")
FIG 3) MEC6	3°
FIG 4) MEC6-RA	3°

PROPRIETARY NOTE

THIS DOCUMENT CONTAINS INFORMATION
CONFIDENTIAL AND PROPRIETARY TO
SAMTEC, INC. AND SHALL NOT BE REPRODUCED
OR TRANSFERRED TO OTHER DOCUMENTS OR
DISCLOSED TO OTHERS OR USED FOR ANY
PURPOSE OTHER THAN THAT WHICH IT WAS
OBTAINED WITHOUT THE EXPRESSED WRITTEN
CONSENT OF SAMTEC, INC.

samtec

520 PARK EAST BLVD, NEW ALBANY, IN 47150
PHONE: 812-944-6733 FAX: 812-948-5047
e-Mail info@SAMTEC.com code 55322