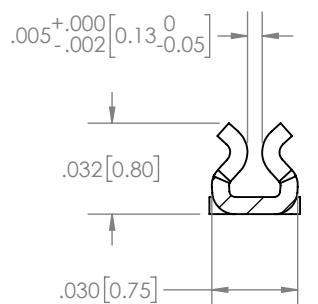
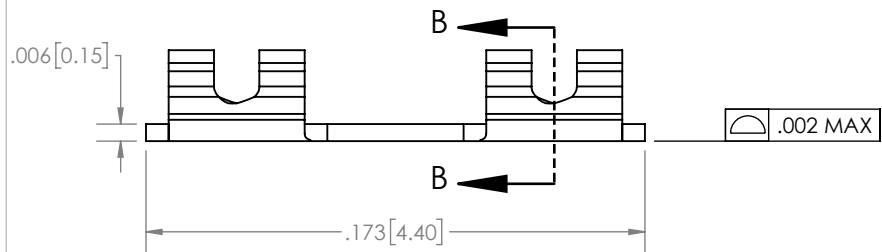
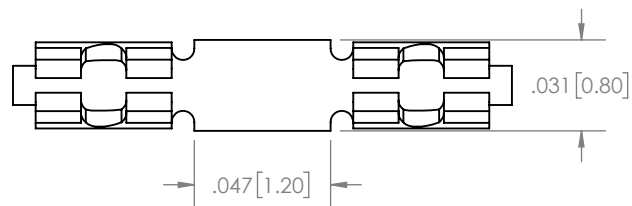
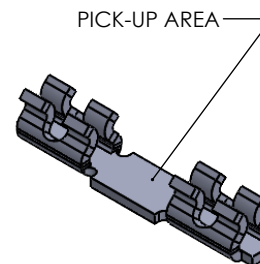


NOTES:

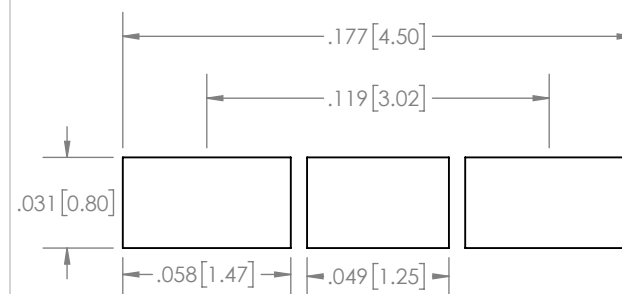
1. MATERIAL: 0.15mm SUS301
2. FINISH: 2.0µm TIN OVER 0.4µm NICKEL PLATING
3. PACKAGE IN TAPE AND REEL
QTY PER REEL: 10000





SECTION B-B



ISOMETRIC VIEW



RECOMMENDED PAD SIZE

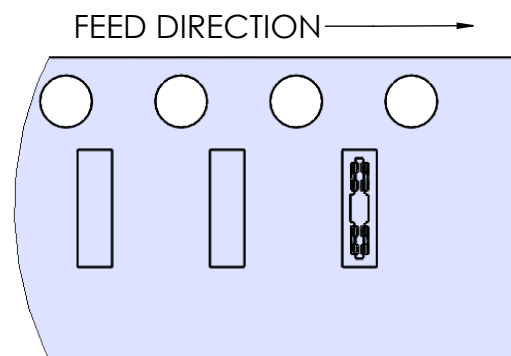
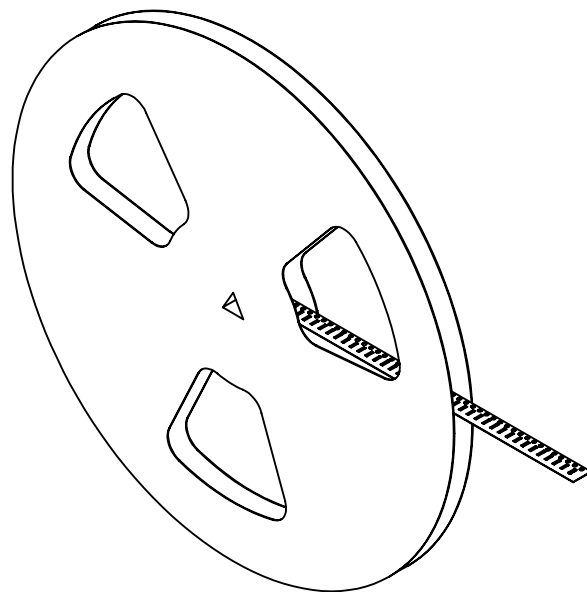
UNLESS OTHERWISE SPECIFIED U/M INCHES TOLERANCE ±0.005			PART NUMBER SCLP-440080	REV. 0
	ROHS COMPLIANT		DESCRIPTION CLIP FRAME	QE FILE 14151
CAGE CODE L 0641		DRAWN BY WY	DATE 15-03-31	
THIS DRAWING WAS PRODUCED USING SOLIDWORKS		CHECKED BY	SCALE 15:1	SHEET 1 OF 2

SHIELDING IS OUR SPECIALTY
3GMetalworx.com

PROPRIETARY NOTICE: THIS DRAWING, LISTS OR SPECIFICATIONS ARE THE CONFIDENTIAL INFORMATION AND/OR TRADE SECRETS OF 3GMETALWORX INC. AND ISSUED IN STRICT CONFIDENCE. EXCEPT AS AUTHORIZED BY 3GMETALWORX IN WRITING, THESE DRAWINGS, LISTS OR SPECIFICATIONS SHALL NOT BE REPRODUCED, RETRANSMITTED, USED FOR THE DESIGN, MANUFACTURE OR SALE OF EQUIPMENT OR USED FOR ANY OTHER PURPOSE OTHER THAN EVALUATION.

NOTES:



1. ASSEMBLE IN TAPE AND REEL AS SHOWN



DETAIL D
SCALE 3 : 1

SHIELDING IS OUR SPECIALTY
3GMetalworx.com

PROPRIETARY NOTICE: THIS DRAWING, LISTS OR SPECIFICATIONS ARE THE CONFIDENTIAL INFORMATION AND/OR TRADE SECRETS OF 3GMETALWORX INC. AND ISSUED IN STRICT CONFIDENCE. EXCEPT AS AUTHORIZED BY 3GMETALWORX IN WRITING, THESE DRAWINGS, LISTS OR SPECIFICATIONS SHALL NOT BE REPRODUCED, RETRANSMITTED, USED FOR THE DESIGN, MANUFACTURE OR SALE OF EQUIPMENT OR USED FOR ANY OTHER PURPOSE OTHER THAN EVALUATION

UNLESS OTHERWISE SPECIFIED U/M INCHES		TOLERANCE ±0.005		PART NUMBER		REV.
		ROHS COMPLIANT		SCLP-440080		0
CAGE CODE		L 0641		DESCRIPTION CLIP FRAME		QE FILE
THIS DRAWING WAS PRODUCED USING SOLIDWORKS			DRAWN BY	WY	DATE	15-03-31
			CHECKED BY	SCALE	1:4	SHEET 2 OF 2