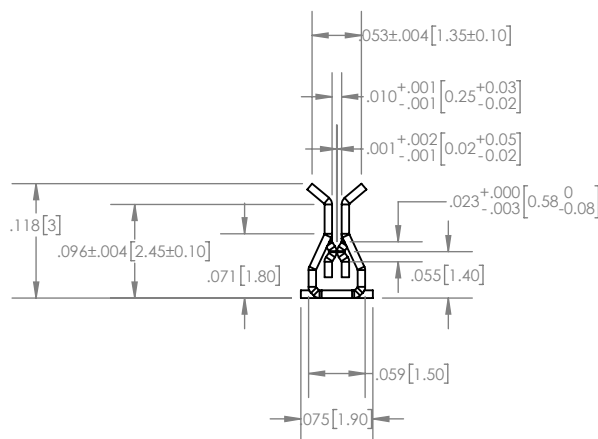
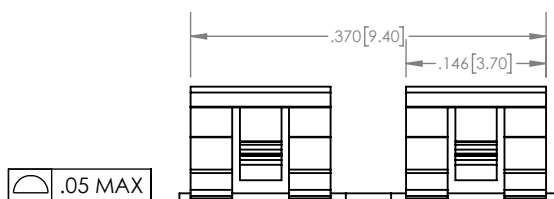
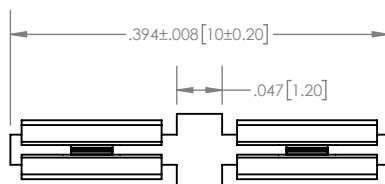
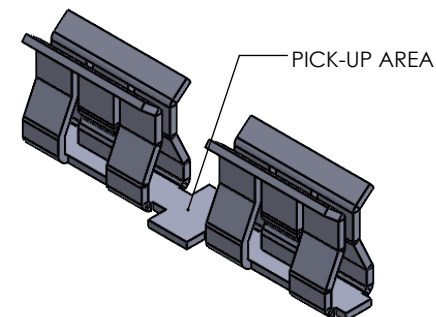


NOTES:

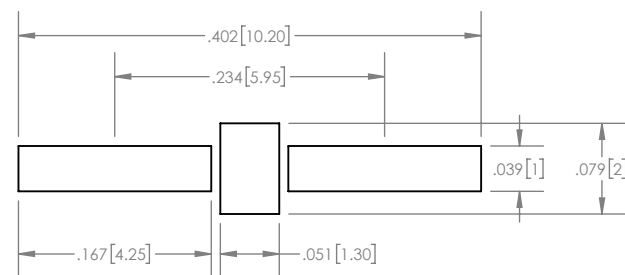
1. MATERIAL: .006" BERYLLIUM COPPER
2. FINISH: PREPLATED .000120" [0.00305] MIN
MATTE TIN OVER .000050" [0.00127] MIN NICKEL
3. PACKAGE IN TAPE AND REEL
QTY PER REEL: 2500



REV	ECO #	DESCRIPTION	DATE
--		PRE-RELEASE	16-04-05
0		INITIAL RELEASE	16-04-05



ISOMETRIC VIEW



RECOMMENDED PAD SIZE

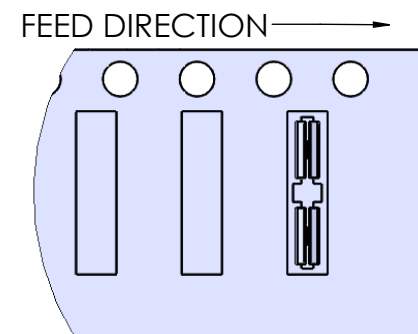
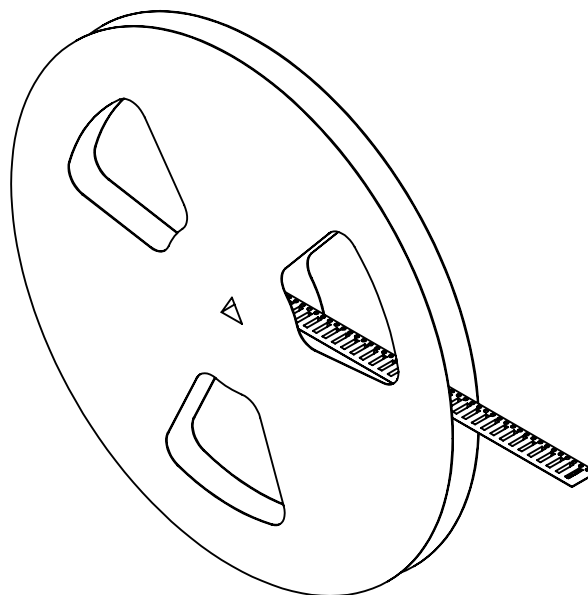
UNLESS OTHERWISE SPECIFIED U/M INCHES TOLERANCE ±0.005			PART NUMBER SCLP-100190	REV. 0
	ROHS COMPLIANT		DESCRIPTION CLIP FRAME	QE FILE 25808
CAGE CODE	L 0641	DRAWN BY	DATE	16-04-05
THIS DRAWING WAS PRODUCED USING SOLIDWORKS		CHECKED BY	SCALE	5:1 SHEET 1 OF 2

SHIELDING IS OUR SPECIALTY
3GMetalworx.com

PROPRIETARY NOTICE: THIS DRAWING, LISTS OR SPECIFICATIONS ARE THE CONFIDENTIAL INFORMATION AND/OR TRADE SECRETS OF 3GMETALWORX INC. AND ISSUED IN STRICT CONFIDENCE. EXCEPT AS AUTHORIZED BY 3GMETALWORX IN WRITING, THESE DRAWINGS, LISTS OR SPECIFICATIONS SHALL NOT BE REPRODUCED, RETRANSMITTED, USED FOR THE DESIGN, MANUFACTURE, OR SALE OF EQUIPMENT OR USED FOR ANY OTHER PURPOSE OTHER THAN EVALUATION.

NOTES:



1. ASSEMBLE IN TAPE AND REEL AS SHOWN



DETAIL B
SCALE 2 : 1

SHIELDING IS OUR SPECIALTY
3GMetalworx.com

PROPRIETARY NOTICE: THIS DRAWING, LIST OR SPECIFICATIONS ARE THE CONFIDENTIAL INFORMATION AND/OR TRADE SECRETS OF 3GMETALWORX INC. AND ISSUED IN STRICT CONFIDENCE. EXCEPT AS AUTHORIZED BY 3GMETALWORX IN WRITING, THESE DRAWINGS, LISTS OR SPECIFICATIONS SHALL NOT BE REPRODUCED, RETRANSMITTED, USED FOR THE DESIGN, MANUFACTURE OR SALE OF EQUIPMENT OR USED FOR ANY OTHER PURPOSE OTHER THAN EVALUATION

UNLESS OTHERWISE SPECIFIED U/M INCHES TOLERANCE ± 0.005			PART NUMBER SCLP-100190	REV. 0
	ROHS COMPLIANT		DESCRIPTION CLIP FRAME	QE FILE 25808
CAGE CODE L 0641		DRAWN BY	DATE 16-04-05	
THIS DRAWING WAS PRODUCED USING SOLIDWORKS		CHECKED BY	SCALE 1:4	SHEET 2 OF 2