

Date : 3/22/2024

**Digikey
701 BROOKS AVE SOUTH
THIEF RIVER FALLS
MN**

Attention: Digikey.SupplierInfo@digkey.com

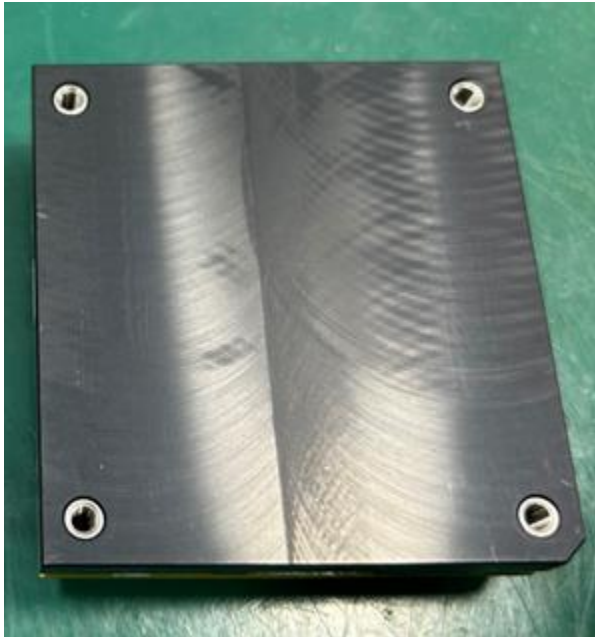
PRODUCT ADVISORY

Subject: Temporary Change in Surface Finish Appearance on the 1600130338A / JRC5016A0S4-HZ

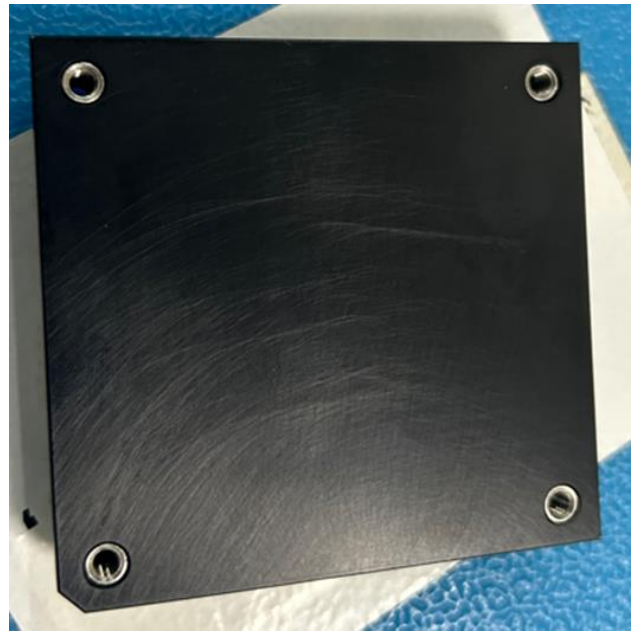
OmniOn Power is set to ship PO# 4274942 (Order Number 4000668368) for Digikey which includes 40pcs of the 1600130338A / JRC5016A0S4-HZ power module. Due to a process change by our heatsink manufacturer these 40pcs have a minor visible appearance change from the previously shipped unit. The units meet all technical requirements including surface roughness and coplanarity. There is no risk of use. OmniOn Power is working with our supplier to correct this appearance for future orders.

Below are photos of the surface appearance for the 40pcs and they typical appearance. Also attached is the heatsink specification and translated documents of the vendors analysis and confirmation they meet technical requirements.

To avoid confusion OmniOn Power asks for email approval from Digikey to ship this product.



40 PCS for PO 029-77016



Typical Appearance

We regret any inconvenience to our customer. If we can be of assistance, or you require additional information, please contact me at paul.ebmeier@Omnionpower.com

Paul Ebmeier

Quality Engineer, Customer Issue Resolution Team

Copy to:

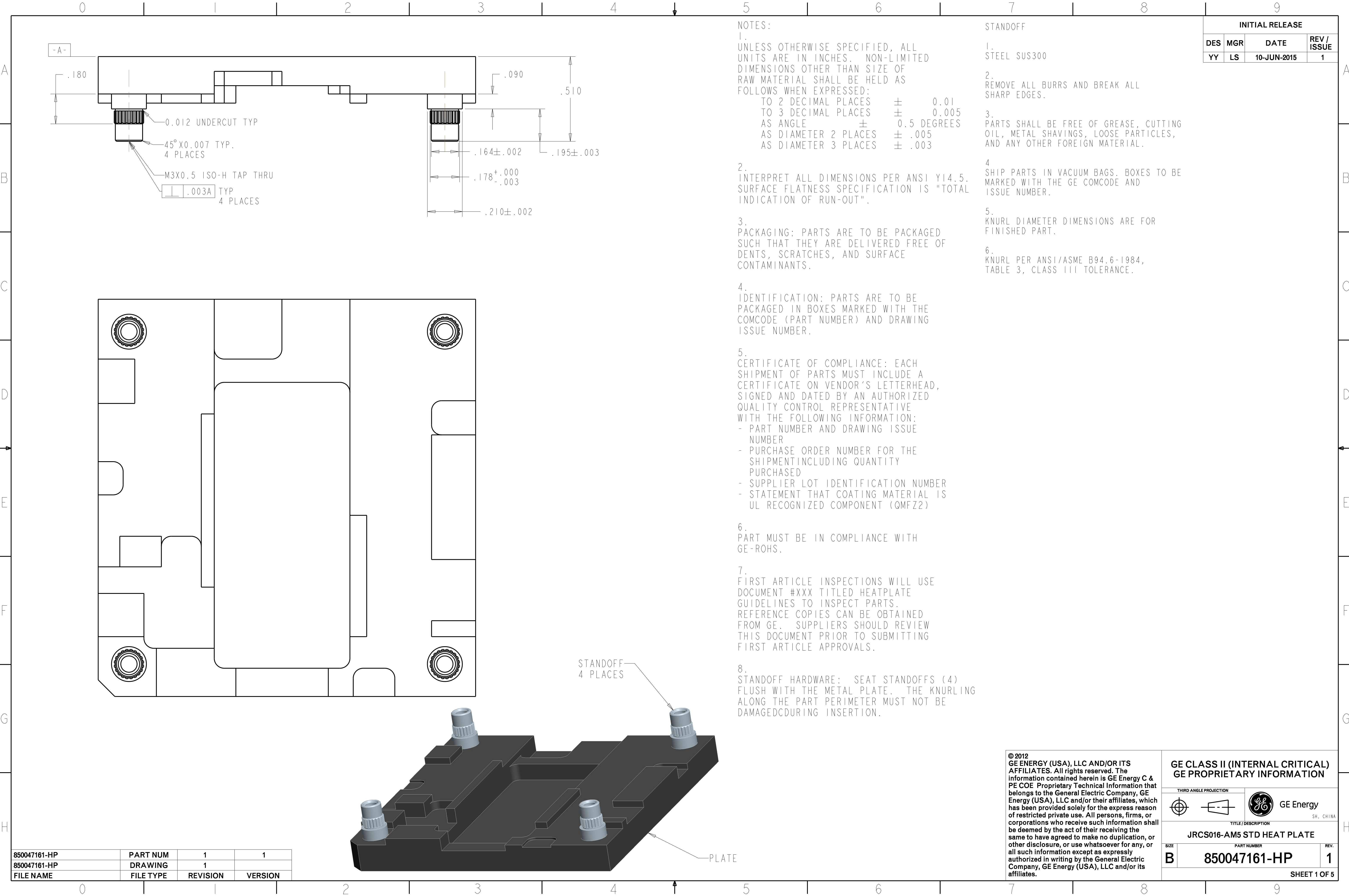
Marco Nesemeier

Alain Lee

Jerry Yeh

Jo Nell Collins

Lydia Li



NOTES:

1. UNLESS OTHERWISE SPECIFIED, ALL UNITS ARE IN INCHES. NON-LIMITED DIMENSIONS OTHER THAN SIZE OF RAW MATERIAL SHALL BE HELD AS FOLLOWS WHEN EXPRESSED:

| | | |
|----------------------|---|-------------|
| TO 2 DECIMAL PLACES | ± | 0.01 |
| TO 3 DECIMAL PLACES | ± | 0.005 |
| AS ANGLE | ± | 0.5 DEGREES |
| AS DIAMETER 2 PLACES | ± | .005 |
| AS DIAMETER 3 PLACES | ± | .003 |

2. INTERPRET ALL DIMENSIONS PER ANSI Y14.5. SURFACE FLATNESS SPECIFICATION IS "TOTAL INDICATION OF RUN-OUT".

3. PACKAGING: PARTS ARE TO BE PACKAGED SUCH THAT THEY ARE DELIVERED FREE OF DENTS, SCRATCHES, AND SURFACE CONTAMINANTS.

4. IDENTIFICATION: PARTS ARE TO BE PACKAGED IN BOXES MARKED WITH THE COMCODE (PART NUMBER) AND DRAWING ISSUE NUMBER.

5. CERTIFICATE OF COMPLIANCE: EACH SHIPMENT OF PARTS MUST INCLUDE A CERTIFICATE ON VENDOR'S LETTERHEAD, SIGNED AND DATED BY AN AUTHORIZED QUALITY CONTROL REPRESENTATIVE WITH THE FOLLOWING INFORMATION:

- PART NUMBER AND DRAWING ISSUE NUMBER
- PURCHASE ORDER NUMBER FOR THE SHIPMENT INCLUDING QUANTITY PURCHASED
- SUPPLIER LOT IDENTIFICATION NUMBER
- STATEMENT THAT COATING MATERIAL IS UL RECOGNIZED COMPONENT (QMFZ2)

6. PART MUST BE IN COMPLIANCE WITH GE-ROHS.

7. FIRST ARTICLE INSPECTIONS WILL USE DOCUMENT #XXX TITLED HEATPLATE GUIDELINES TO INSPECT PARTS. REFERENCE COPIES CAN BE OBTAINED FROM GE. SUPPLIERS SHOULD REVIEW THIS DOCUMENT PRIOR TO SUBMITTING FIRST ARTICLE APPROVALS.

8. STANDOFF HARDWARE: SEAT STANDOFFS (4) FLUSH WITH THE METAL PLATE. THE KNURLING ALONG THE PART PERIMETER MUST NOT BE DAMAGED DURING INSERTION.

STANDOFF

1. STEEL SUS300

2. REMOVE ALL BURRS AND BREAK ALL SHARP EDGES.

3. PARTS SHALL BE FREE OF GREASE, CUTTING OIL, METAL SHAVINGS, LOOSE PARTICLES, AND ANY OTHER FOREIGN MATERIAL.

4. SHIP PARTS IN VACUUM BAGS. BOXES TO BE MARKED WITH THE GE COMCODE AND ISSUE NUMBER.

5. KNURL DIAMETER DIMENSIONS ARE FOR FINISHED PART.

6. KNURL PER ANSI/ASME B94.6-1984, TABLE 3, CLASS III TOLERANCE.

| INITIAL RELEASE | | | |
|-----------------|-----|-------------|-------------|
| DES | MGR | DATE | REV / ISSUE |
| YY | LS | 10-JUN-2015 | 1 |

| | | | |
|--------------|-----------|----------|---------|
| 850047161-HP | PART NUM | 1 | 1 |
| 850047161-HP | DRAWING | 1 | |
| FILE NAME | FILE TYPE | REVISION | VERSION |

© 2012
GE ENERGY (USA), LLC AND/OR ITS AFFILIATES. All rights reserved. The information contained herein is GE Energy C & PE COE Proprietary Technical Information that belongs to the General Electric Company, GE Energy (USA), LLC and/or their affiliates, which has been provided solely for the express reason of restricted private use. All persons, firms, or corporations who receive such information shall be deemed by the act of their receiving the same to have agreed to make no duplication, or other disclosure, or use whatsoever for any, or all such information except as expressly authorized in writing by the General Electric Company, GE Energy (USA), LLC and/or its affiliates.

GE CLASS II (INTERNAL CRITICAL)
GE PROPRIETARY INFORMATION

THIRD ANGLE PROJECTION

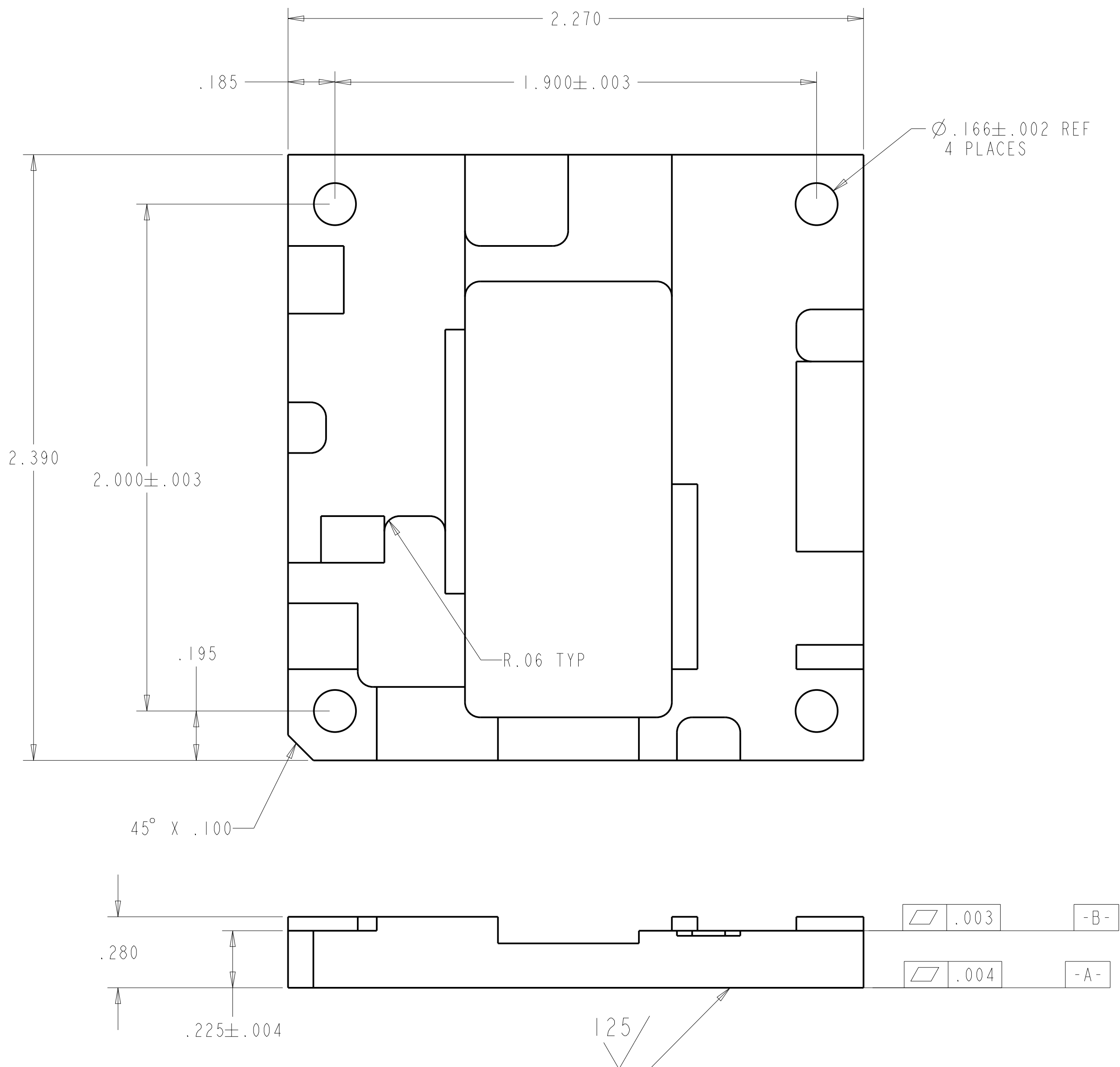
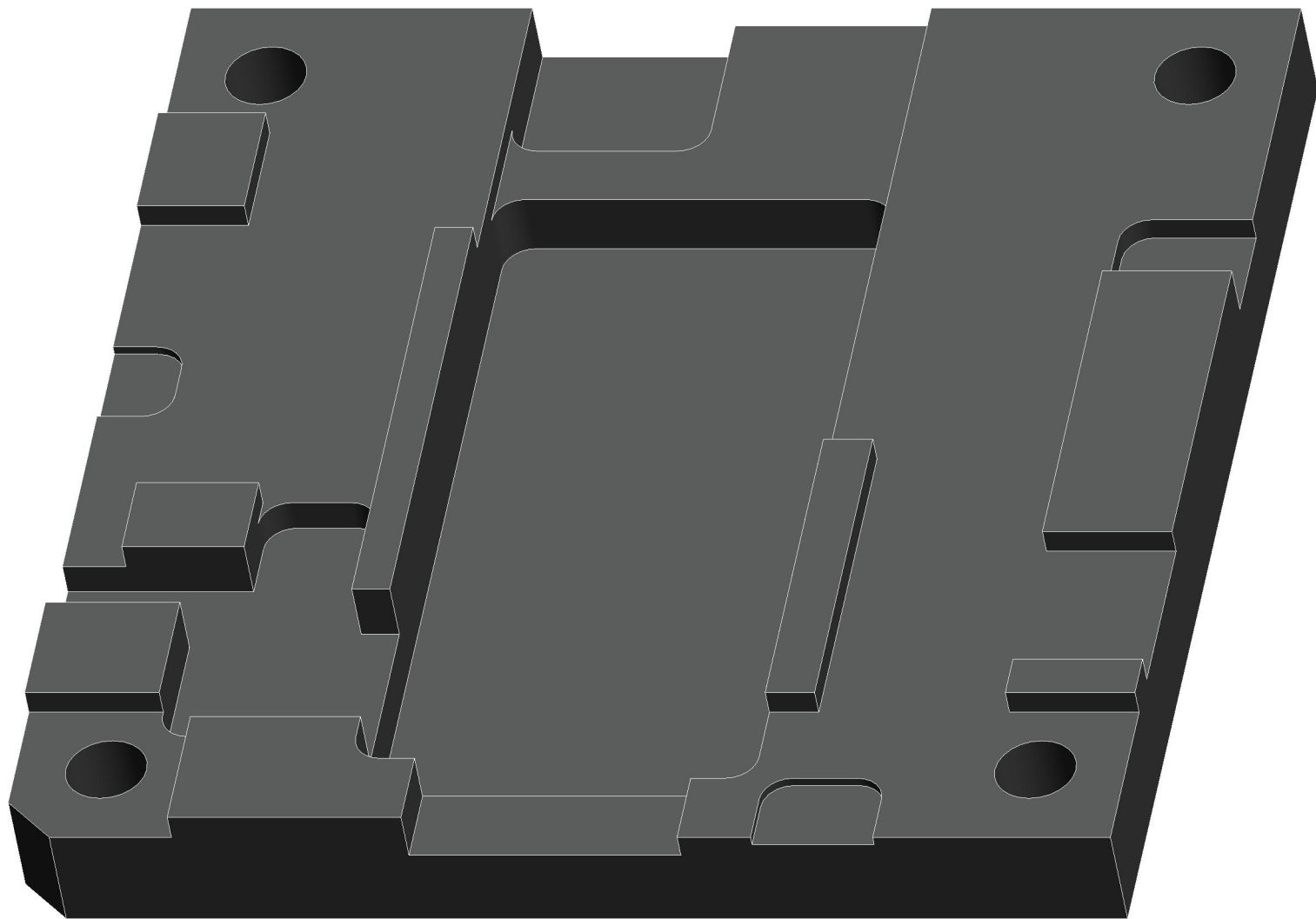
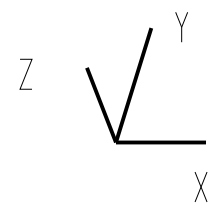
GE Energy
SH, CHINA

TITLE / DESCRIPTION
JRCS016-AM5 STD HEAT PLATE

| | | |
|-----------|-----------------------------|-----------|
| SIZE B | PART NUMBER 850047161-HP | REV. 1 |
|-----------|-----------------------------|-----------|

SHEET 1 OF 5

PLATE



NOTES:

1. UNLESS OTHERWISE SPECIFIED, ALL UNITS ARE IN INCHES. NON-LIMITED DIMENSIONS OTHER THAN SIZE OF RAW MATERIAL SHALL BE HELD AS FOLLOWS WHEN EXPRESSED:
- | | | |
|----------------------|---|-------------|
| TO 2 DECIMAL PLACES | ± | 0.01 |
| TO 3 DECIMAL PLACES | ± | 0.005 |
| AS ANGLE | ± | 0.5 DEGREES |
| AS DIAMETER 2 PLACES | ± | .005 |
| AS DIAMETER 3 PLACES | ± | .003 |

2. MATERIAL:
EXTRUDED/MACHINED PARTS: ALUMINUM 6063-T5 OR 6061-T6 PER THE APPLICABLE ASTM SPECIFICATION (B209 FOR SHEET AND PLATE, B211 FOR ROLLED OR COLD-FINISHED BARS, B221 FOR EXTRUDED BARS OR SHAPES).

- DIE CAST PARTS: ALUMINUM ALLOY ADC6 OR ADC12 PER ASTM B85-03.

3. FINISH:
BLACK ANODIZED PER MIL-A-8625, TYPE II FOR EXTUDED PARTS , TYPE III FOR DIE CAST PARTS. TYPE III FINISH THICKNESS>15UM EXCEPT IN THE FOUR Ø.166 HOLES USED FOR THE STANDOFFS.

- COLOR PER FED-STD 595, BLACK.

- COATING MUST BE CONTINUOUS ACROSS ALL REQUIRED SURFACES AND MUST NOT HAVE VOIDS OR PIN HOLES.

4. ISOLATION REQUIREMENT:
ALL COATED SURFACES MUST WITHSTAND A MINIMUM VOLTAGE OF 500 VDC FOR 15 SECONDS.

5. REMOVE ALL BURRS AND BREAK ALL SHARP EDGES. METAL BURRS ARE NOT ALLOWED IN HOLES.

6. INTERPRET ALL DIMENSIONS PER ANSI Y14.5. SURFACE FLATNESS SPECIFICATION IS "TOTAL INDICATION OF RUN-OUT".

NOTES: CONTINUED

7. THE PART MAY BE RADIUSSED BEFORE COATING. THE PURPOSE IS TO ELIMINATE ALL SHARP CORNERS IN ORDER TO MEET THE MINIMUM COATING THICKNESS REQUIREMENT. USE 0.031 INCH MAXIMUM RADIUS UNLESS OTHERWISE INDICATED.

8. PACKAGING: PARTS ARE TO BE PACKAGED SUCH THAT THEY ARE DELIVERED FREE OF DENTS, SCRATCHES, AND SURFACE CONTAMINANTS.

9. IDENTIFICATION: PARTS ARE TO BE PACKAGED IN BOXES MARKED WITH THE COMCODE (PART NUMBER) AND DRAWING ISSUE NUMBER.


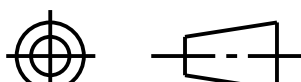
10. CERTIFICATE OF COMPLIANCE: EACH SHIPMENT OF PARTS MUST INCLUDE A CERTIFICATE ON VENDOR'S LETTERHEAD, SIGNED AND DATED BY AN AUTHORIZED QUALITY CONTROL REPRESENTATIVE WITH THE FOLLOWING INFORMATION:
- PART NUMBER AND DRAWING ISSUE NUMBER
 - PURCHASE ORDER NUMBER FOR THE SHIPMENT INCLUDING QUANTITY PURCHASED
 - SUPPLIER LOT IDENTIFICATION NUMBER
 - STATEMENT THAT COATING MATERIAL IS UL RECOGNIZED COMPONENT (QMFZ2)

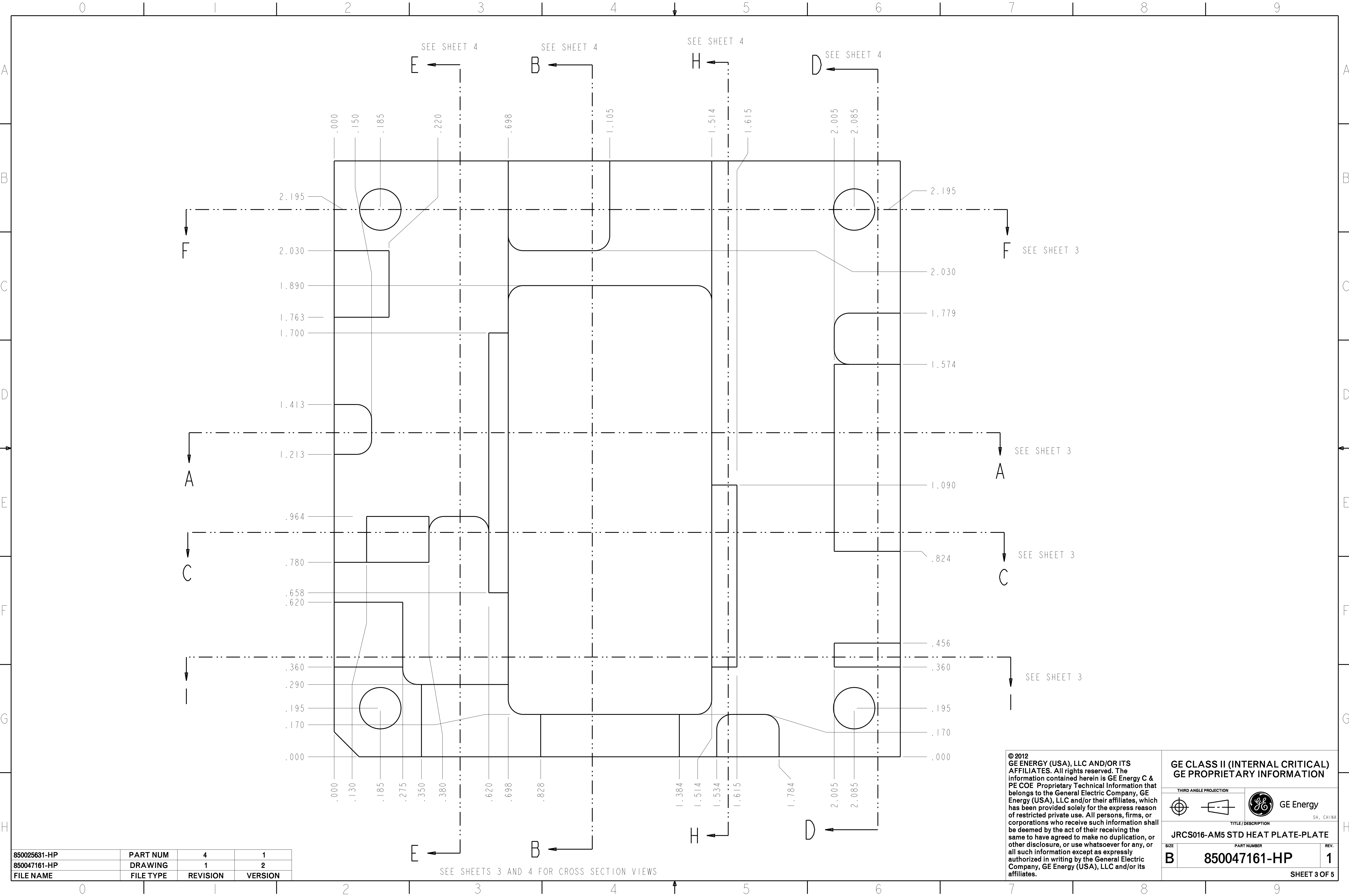
11. PART MUST BE IN COMPLIANCE WITH GE-ROHS.

12. FIRST ARTICLE INSPECTIONS WILL USE DOCUMENT #XXX TITLED HEATPLATE GUIDELINES TO INSPECT PARTS. REFERENCE COPIES CAN BE OBTAINED FROM GE. SUPPLIERS SHOULD REVIEW THIS DOCUMENT PRIOR TO SUBMITTING FIRST ARTICLE APPROVALS.

| | | | |
|--------------|-----------|----------|---------|
| 850047161-HP | PART NUM | 1 | 1 |
| 850047161-HP | DRAWING | 1 | 2 |
| FILE NAME | FILE TYPE | REVISION | VERSION |

© 2012
GE ENERGY (USA), LLC AND/OR ITS AFFILIATES. All rights reserved. The information contained herein is GE Energy C & PE COE Proprietary Technical Information that belongs to the General Electric Company, GE Energy (USA), LLC and/or their affiliates, which has been provided solely for the express reason of restricted private use. All persons, firms, or corporations who receive such information shall be deemed by the act of their receiving the same to have agreed to make no duplication, or other disclosure, or use whatsoever for any, or all such information except as expressly authorized in writing by the General Electric Company, GE Energy (USA), LLC and/or its affiliates.

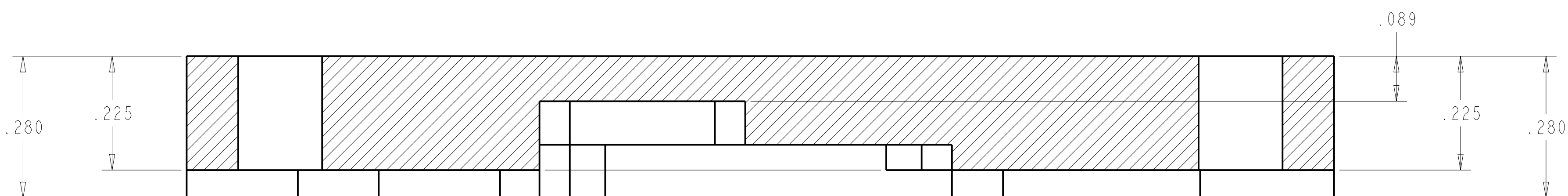
| | | | |
|---|--------------|--|------|
| GE CLASS II (INTERNAL CRITICAL) GE PROPRIETARY INFORMATION | | | |
| THIRD ANGLE PROJECTION | |  GE Energy SH, CHINA | |
|  | | | |
| TITLE / DESCRIPTION | | | |
| JRCS016-AM5 STD HEAT PLATE-PLATE | | | |
| SIZE | PART NUMBER | | REV. |
| B | 850047161-HP | | 1 |
| SHEET 2 OF 5 | | | |



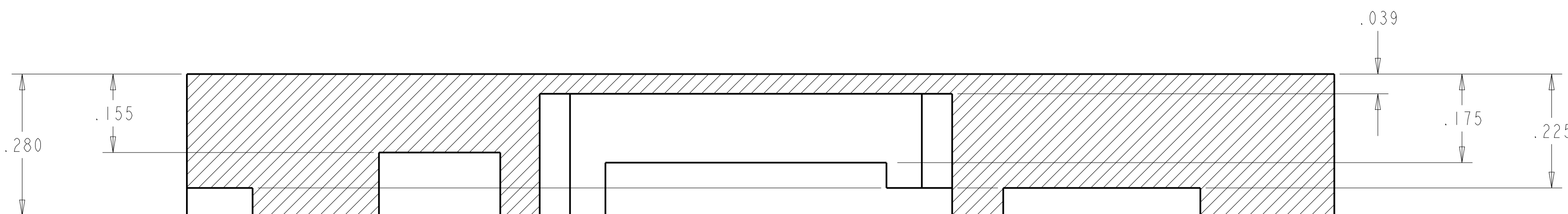
| | | | |
|--------------|-----------|----------|---------|
| 850025631-HP | PART NUM | 4 | 1 |
| 850047161-HP | DRAWING | 1 | 2 |
| FILE NAME | FILE TYPE | REVISION | VERSION |

© 2012
GE ENERGY (USA), LLC AND/OR ITS
AFFILIATES. All rights reserved. The
information contained herein is GE Energy C &
PE COE Proprietary Technical Information that
belongs to the General Electric Company, GE
Energy (USA), LLC and/or their affiliates, which
has been provided solely for the express reason
of restricted private use. All persons, firms, or
corporations who receive such information shall
be deemed by the act of their receiving the
same to have agreed to make no duplication, or
other disclosure, or use whatsoever for any, or
all such information except as expressly
authorized in writing by the General Electric
Company, GE Energy (USA), LLC and/or its
affiliates.

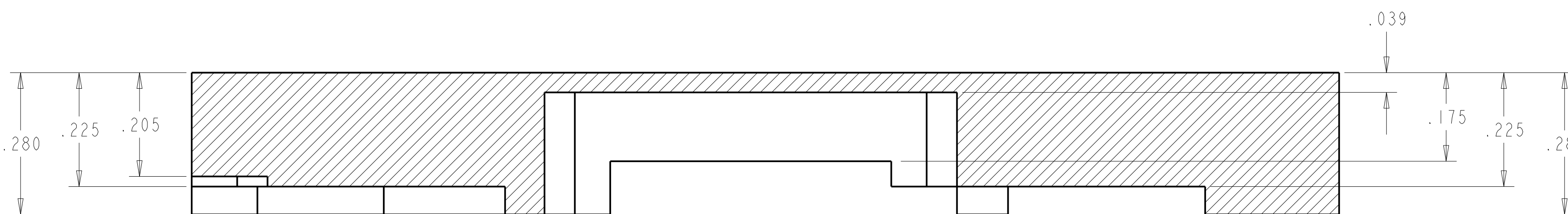
| GE CLASS II (INTERNAL CRITICAL) GE PROPRIETARY INFORMATION | | |
|---|--------------|------|
| THIRD ANGLE PROJECTION | | |
| | | |
| TITLE/DESCRIPTION | | |
| JRCS016-AM5 STD HEAT PLATE-PLATE | | |
| SIZE | PART NUMBER | REV. |
| B | 850047161-HP | 1 |
| SHEET 3 OF 5 | | |



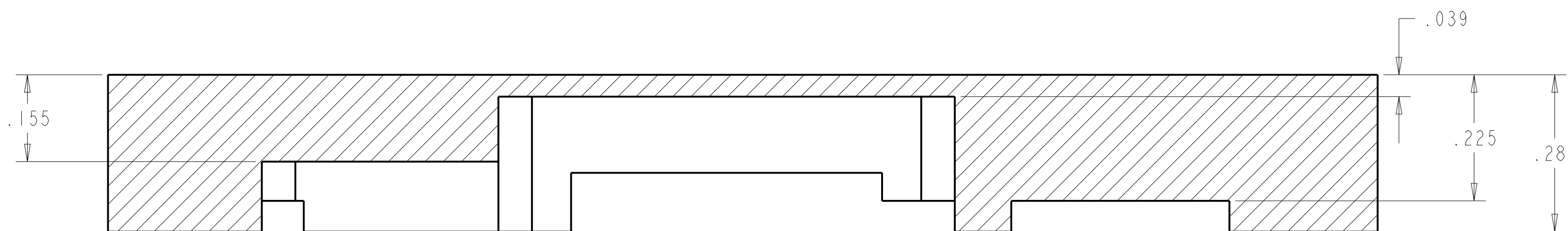
SECTION F - F



SECTION C - C



SECTION A - A



SECTION I - I
SCALE 6.000

© 2012
GE ENERGY (USA), LLC AND/OR ITS
AFFILIATES. All rights reserved. The
Information contained herein is GE Energy C &
PE COE Proprietary Technical Information that
belongs to the General Electric Company, GE
Energy (USA), LLC and/or their affiliates, which
has been provided solely for the express reason
of restricted private use. All persons, firms, or
corporations who receive such information shall
be deemed by the act of their receiving the
same to have agreed to make no duplication, or
other disclosure, or use whatsoever for any, or
all such information except as expressly
authorized in writing by the General Electric
Company, GE Energy (USA), LLC and/or its
affiliates.

GE CLASS II (INTERNAL CRITICAL)
GE PROPRIETARY INFORMATION

THIRD ANGLE PROJECTION



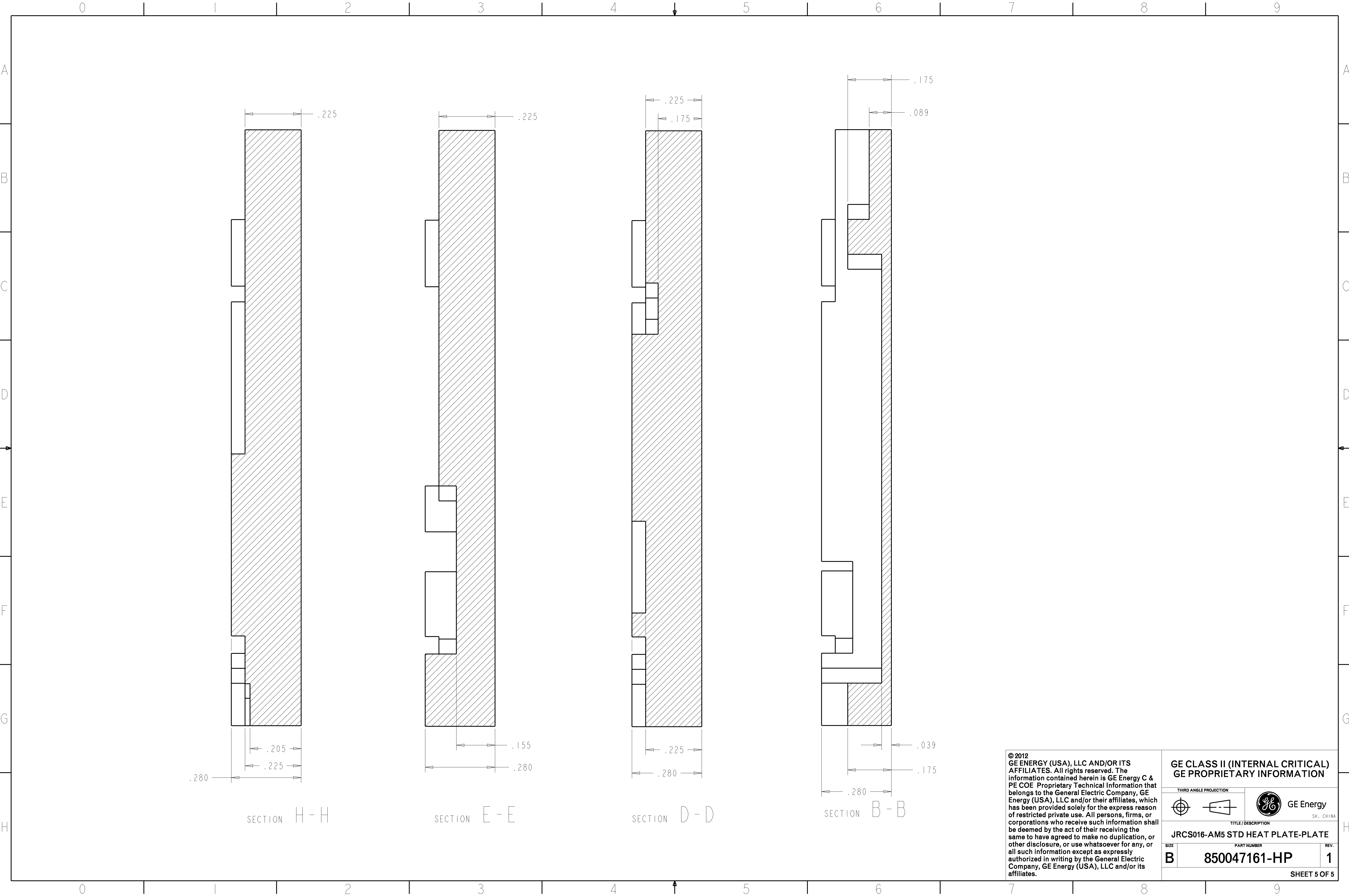
TITLE/DESCRIPTION

JRCS016-AM5 STD HEAT PLATE-PLATE

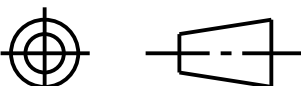
SIZE PART NUMBER REV.

B 850047161-HP 1

SHEET 4 OF 5



© 2012
GE ENERGY (USA), LLC AND/OR ITS
AFFILIATES. All rights reserved. The
Information contained herein is GE Energy C &
PE COE Proprietary Technical Information that
belongs to the General Electric Company, GE
Energy (USA), LLC and/or their affiliates, which
has been provided solely for the express reason
of restricted private use. All persons, firms, or
corporations who receive such information shall
be deemed by the act of their receiving the
same to have agreed to make no duplication, or
other disclosure, or use whatsoever for any, or
all such information except as expressly
authorized in writing by the General Electric
Company, GE Energy (USA), LLC and/or its
affiliates.

| GE CLASS II (INTERNAL CRITICAL) GE PROPRIETARY INFORMATION | | |
|---|--------------|------|
| THIRD ANGLE PROJECTION | | |
|  | | |
| TITLE/DESCRIPTION | | |
| JRCS016-AM5 STD HEAT PLATE-PLATE | | |
| SIZE | PART NUMBER | REV. |
| B | 850047161-HP | 1 |
| SHEET 5 OF 5 | | |