

FIG 1
(SIR1-03-X-S-X-A-TR SHOWN)
(FOR POSITIONS -03, -05, -07, -10, & -15) [B]

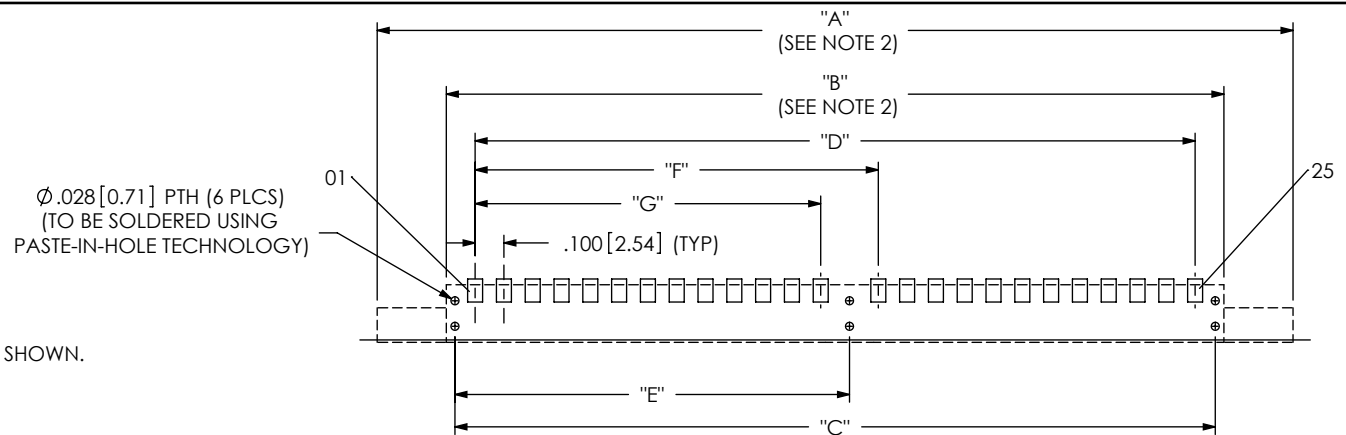


FIG 2
(SIR1-25-X-S-X-A-TR SHOWN)
(SAME AS FIG 1, EXCEPT AS SHOWN)
(FOR POSITIONS -20, -25, & -30)
(NOT TOOLED)

NOTES:

1. ALL DIMENSIONS ARE SYMMETRIC ABOUT THE CENTERLINE, EXCEPT AS SHOWN.
2. CONNECTOR ENVELOPE DIMENSIONS. OTHER COMPONENTS PLACED ON PCB SHALL AVOID THIS ZONE.

TABLE 1

No. OF POS	"A"	"B"	"C"	"D"	"E"	"F"	"G"
-03	.880 [22.35]	.400 [10.16]	.340 [8.64]	.200 [5.08]	N/A	N/A	N/A
-05	1.080 [27.43]	.600 [15.24]	.540 [13.72]	.400 [10.16]	N/A	N/A	N/A
-07	1.280 [32.51]	.800 [20.32]	.740 [18.80]	.600 [15.24]	N/A	N/A	N/A
-10	1.580 [40.13]	1.100 [27.94]	1.040 [26.42]	.900 [22.86]	N/A	N/A	N/A
-15	2.080 [52.83]	1.600 [40.64]	1.540 [39.12]	1.400 [35.56]	N/A	N/A	N/A
*-20	2.680 [68.07]	2.200 [55.88]	2.140 [54.36]	2.000 [50.80]	1.070 [27.18]	1.100 [27.94]	.900 [22.86]
*-25	3.180 [80.77]	2.700 [68.58]	2.640 [67.06]	2.500 [63.50]	1.370 [34.80]	1.400 [35.56]	1.200 [30.48]
*-30	3.680 [93.47]	3.200 [81.28]	3.140 [79.76]	3.000 [76.20]	1.570 [39.88]	1.600 [40.64]	1.400 [35.56]

(* = NOT TOOLED)

F:\dwg\misc\mktg\footprnt\SIR1-XX-X-S-X-X-TR-FOOTPRINT.SLDDRW

PROPRIETARY NOTE
THIS DOCUMENT CONTAINS CONFIDENTIAL AND PROPRIETARY INFORMATION AND ALL DESIGN, MANUFACTURING, REPRODUCTION, USE, PATENT RIGHTS AND SALES RIGHTS ARE EXPRESSLY RESERVED BY SAMTEC, INC. THIS DOCUMENT SHALL NOT BE DISCLOSED, IN WHOLE OR PART, TO ANY UNAUTHORIZED PERSON OR ENTITY NOR REPRODUCED, TRANSFERRED OR INCORPORATED IN ANY OTHER PROJECT IN ANY MANNER WITHOUT THE EXPRESS WRITTEN CONSENT OF SAMTEC, INC.

samtec

520 PARK EAST BLVD, NEW ALBANY, IN 47150
PHONE: 812-944-6733 FAX: 812-948-5047
e-Mail info@SAMTEC.com code 55322

NOTE:
STENCIL TO BE .0060[.152] THICK.

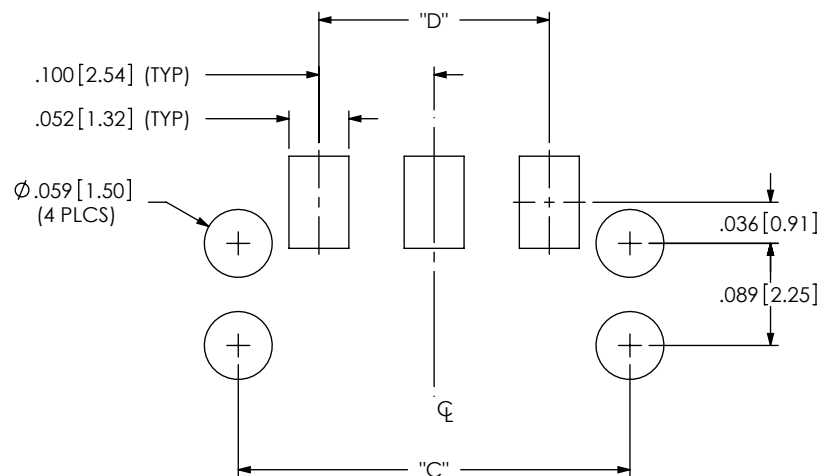


FIG 3
(SIR1-03-X-S-X-A-TR SHOWN)
(FOR POSITIONS -03, -05, -07, -10, & -15) **B**

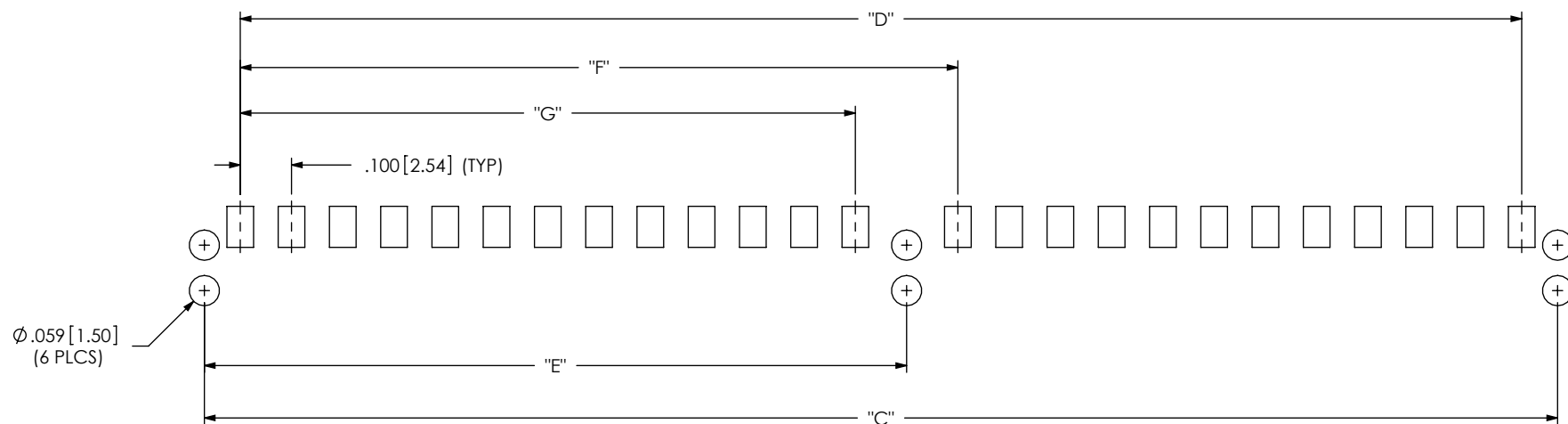
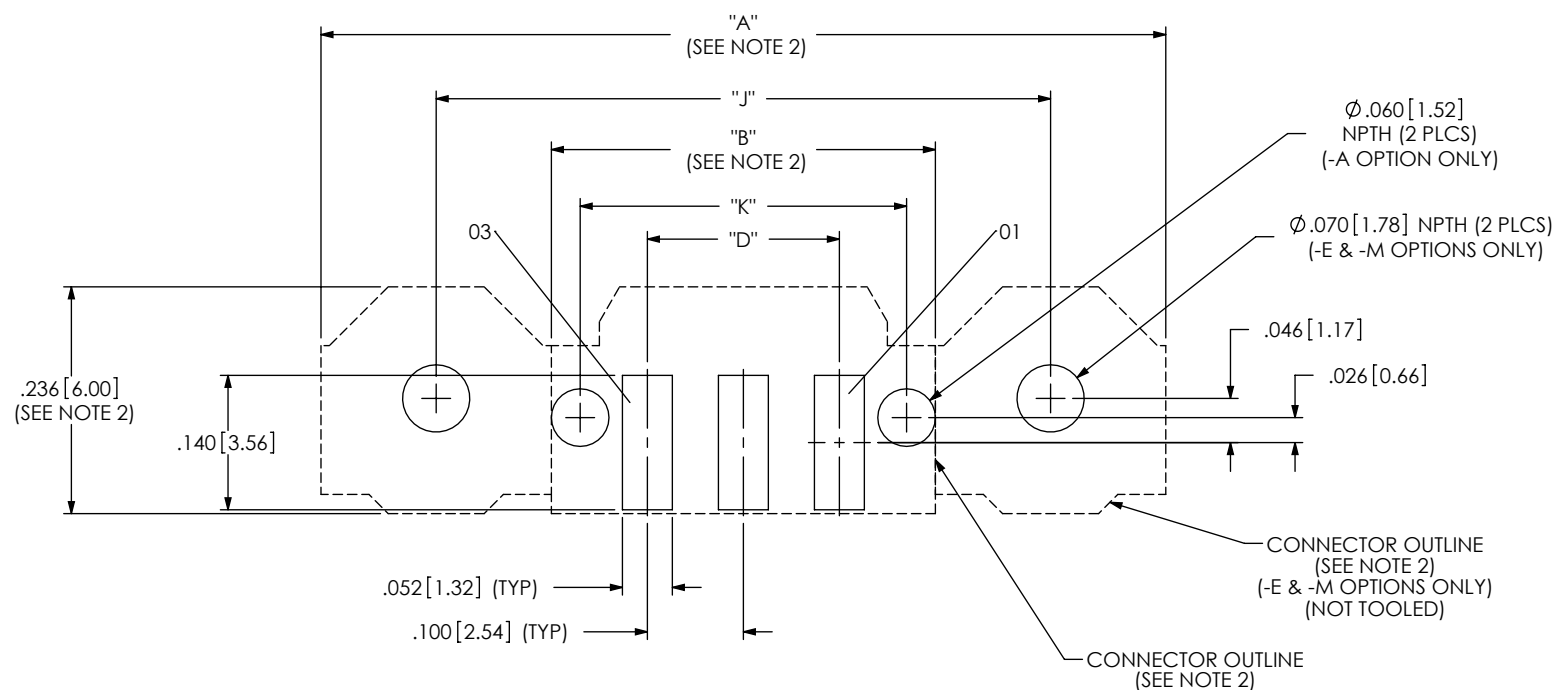


FIG 4
(SIR1-25-X-S-X-A-TR SHOWN)
(SAME AS FIG 3, EXCEPT AS SHOWN)
(FOR POSITIONS -20, -25, & -30)
(NOT TOOLED)

PROPRIETARY NOTE
THIS DOCUMENT CONTAINS CONFIDENTIAL AND
PROPRIETARY INFORMATION AND ALL DESIGN,
MANUFACTURING, REPRODUCTION, USE, PATENT RIGHTS
AND SALES RIGHTS ARE EXPRESSLY RESERVED BY SAMTEC,
INC. THIS DOCUMENT SHALL NOT BE DISCLOSED, IN WHOLE
OR PART, TO ANY UNAUTHORIZED PERSON OR ENTITY NOR
REPRODUCED, TRANSFERRED OR INCORPORATED IN ANY
OTHER PROJECT IN ANY MANNER WITHOUT THE EXPRESS
WRITTEN CONSENT OF SAMTEC, INC.

samtec

520 PARK EAST BLVD, NEW ALBANY, IN 47150
PHONE: 812-944-6733 FAX: 812-948-5047
e-Mail info@SAMTEC.com code 55322

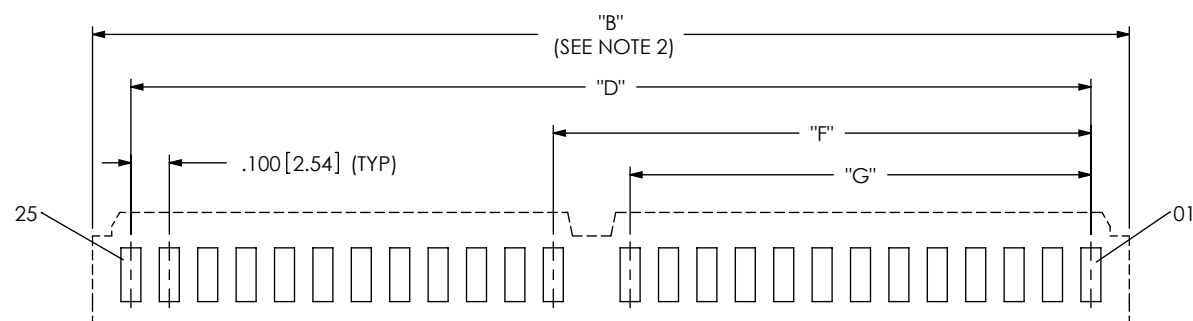


NOTES:

1. ALL DIMENSIONS ARE SYMMETRIC ABOUT THE CENTERLINE, EXCEPT AS SHOWN.
2. CONNECTOR ENVELOPE DIMENSIONS. OTHER COMPONENTS PLACED ON PCB SHALL AVOID THIS ZONE.
3. PLATING TO BE .000030 INCHES GOLD WITH A HARDNESS OF 130-200 KNOOP PER ASTM B 488 TYPE 2, GRADE C.

TABLE 2		
No. OF POS	"J"	"K"
-03	.640 [16.26]	.340 [8.64]
-05	.840 [24.56]	.540 [13.72]
-07	1.040 [26.42]	.740 [18.80]
-10	1.340 [34.04]	1.040 [26.42]
-15	1.840 [46.74]	1.540 [39.12]
*-20	2.440 [61.98]	2.140 [54.36]
*-25	2.940 [74.68]	2.640 [67.06]
*-30	3.440 [87.38]	3.140 [79.76]

(* = NOT TOOLED)



PROPRIETARY NOTE
THIS DOCUMENT CONTAINS CONFIDENTIAL AND PROPRIETARY INFORMATION AND ALL DESIGN, MANUFACTURING, REPRODUCTION, USE, PATENT RIGHTS AND SALES RIGHTS ARE EXPRESSLY RESERVED BY SAMTEC, INC. THIS DOCUMENT SHALL NOT BE DISCLOSED, IN WHOLE OR PART, TO ANY UNAUTHORIZED PERSON OR ENTITY NOR REPRODUCED, TRANSFERRED OR INCORPORATED IN ANY OTHER PROJECT IN ANY MANNER WITHOUT THE EXPRESS WRITTEN CONSENT OF SAMTEC, INC.

samtec

520 PARK EAST BLVD, NEW ALBANY, IN 47150
PHONE: 812-944-6733 FAX: 812-948-5047
e-Mail info@SAMTEC.com code 55322