

DO NOT  
SCALE FROM  
THIS PRINT

DESIGNED & DIMENSIONED  
IN INCHES

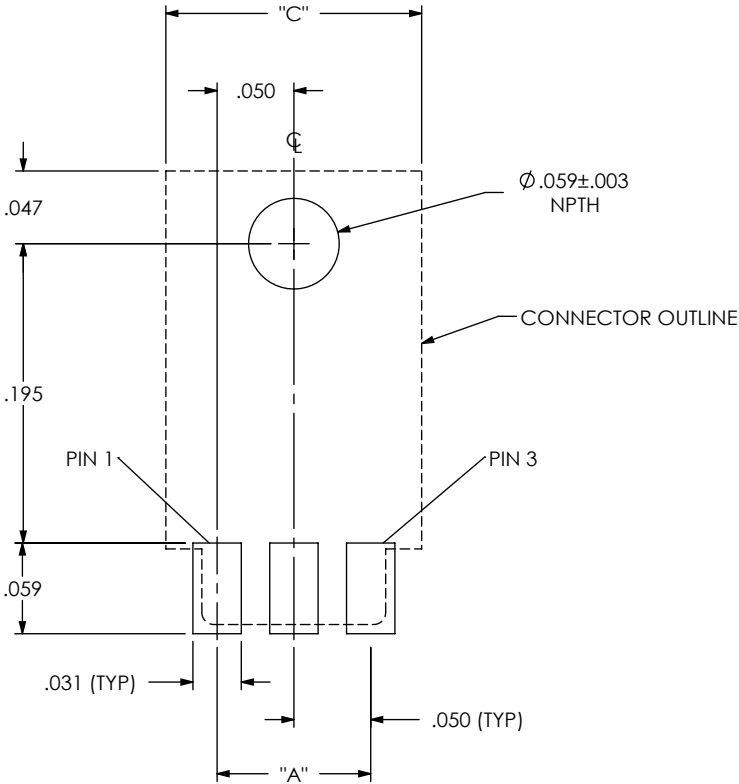


TABLE 1			
No. OF POS	"A"	"B"	"C"
-03	.1000	N/A	.167
-04	.1500	N/A	.217
-05	.2000	.100	.267
-06	.2500	.150	.317
-07	.3000	.200	.367
-08	.3500	.250	.417
-09	.4000	.300	.467
-10	.4500	.350	.517
-11	.5000	.400	.567
-12	.5500	.450	.617
-13	.6000	.500	.667
-14	.6500	.550	.717
-15	.7000	.600	.767
-16	.7500	.650	.817
-17	.8000	.700	.867
-18	.8500	.750	.917
-19	.9000	.800	.967
-20	.9500	.850	1.017
-21	1.0000	.900	1.067
-22	1.0500	.950	1.117
-23	1.1000	1.000	1.167
-24	1.1500	1.050	1.217
-25	1.2000	1.100	1.267
-26	1.2500	1.150	1.317
-27	1.3000	1.200	1.367
-28	1.3500	1.250	1.417
-29	1.4000	1.300	1.467
-30	1.4500	1.350	1.517

FIG. 1  
-03 POSITION SHOWN  
ALL DIMENSIONS ARE SYMMETRIC ABOUT THE CENTERLINE.

PROPRIETARY NOTE

THIS DOCUMENT CONTAINS INFORMATION  
CONFIDENTIAL AND PROPRIETARY TO  
SAMTEC, INC. AND SHALL NOT BE REPRODUCED  
OR TRANSFERRED TO OTHER DOCUMENTS OR  
DISCLOSED TO OTHERS OR USED FOR ANY  
PURPOSE OTHER THAN THAT WHICH IT WAS  
OBTAINED WITHOUT THE EXPRESSED WRITTEN  
CONSENT OF SAMTEC, INC.

**samtec**

520 PARK EAST BLVD, NEW ALBANY, IN 47150  
PHONE: 812-944-6733 FAX: 812-948-5047  
e-Mail info@SAMTEC.com code 55322

DESIGNED & DIMENSIONED  
IN INCHES

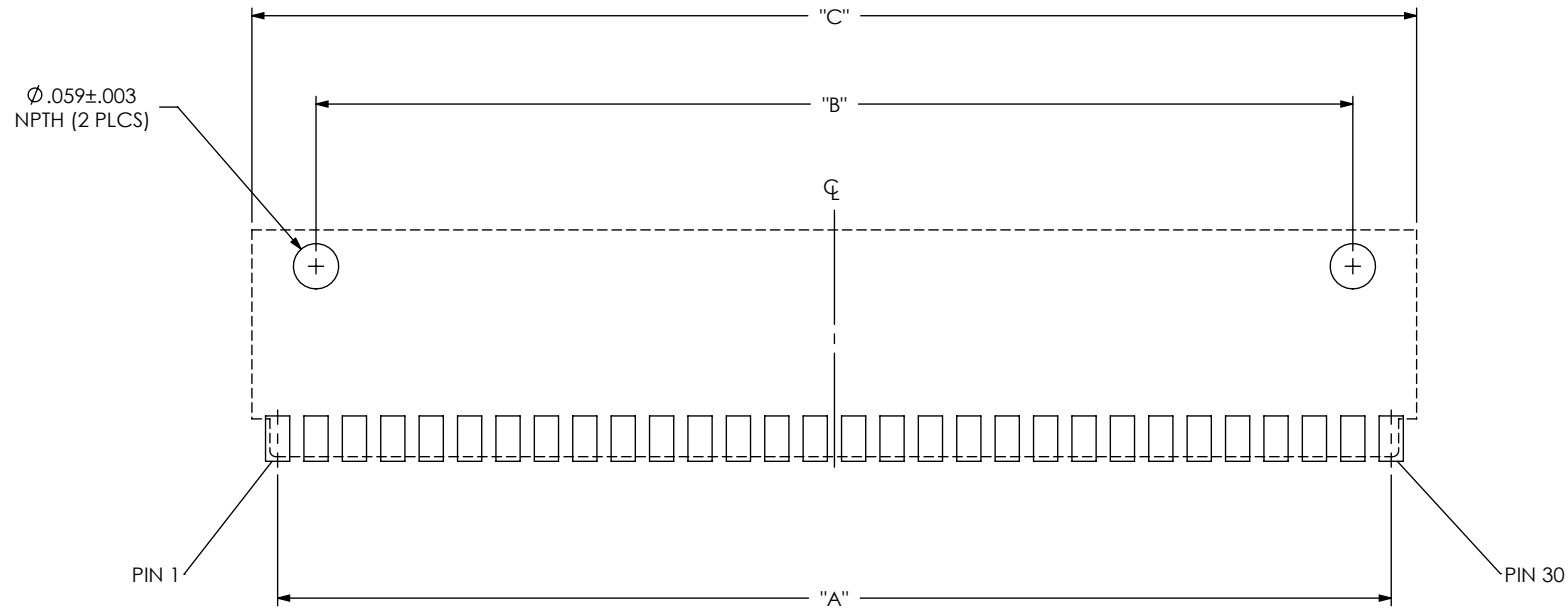


FIG. 2  
-30 POSITION SHOWN  
(SAME AS FIG. 1, EXCEPT AS SHOWN)

PROPRIETARY NOTE

THIS DOCUMENT CONTAINS INFORMATION  
CONFIDENTIAL AND PROPRIETARY TO  
SAMTEC, INC. AND SHALL NOT BE REPRODUCED  
OR TRANSFERRED TO OTHER DOCUMENTS OR  
DISCLOSED TO OTHERS OR USED FOR ANY  
PURPOSE OTHER THAN THAT WHICH IT WAS  
OBTAINED WITHOUT THE EXPRESSED WRITTEN  
CONSENT OF SAMTEC, INC.

**samtec**

520 PARK EAST BLVD, NEW ALBANY, IN 47150  
PHONE: 812-944-6733 FAX: 812-948-5047  
e-Mail info@SAMTEC.com code 55322

NOTE:  
STENCIL TO BE .006" THICK.

DESIGNED & DIMENSIONED  
IN INCHES

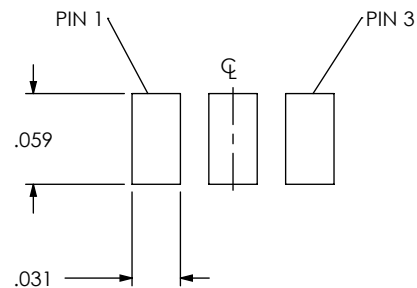


FIG. 3  
-03 POSITION SHOWN

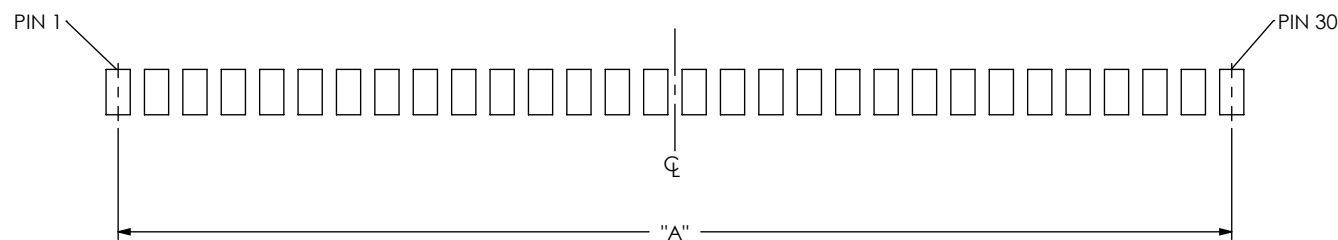


FIG. 4  
-30 POSITION SHOWN  
(SAME AS FIG. 3, EXCEPT AS SHOWN)

ALL DIMENSIONS ARE SYMMETRIC ABOUT THE CENTERLINE.

DESIGNED & DIMENSIONED  
IN INCHES

NOTE:  
PLATING TO BE .000030 INCHES GOLD WITH HARDNESS  
OF 120-200 KNOOP PER ASTM B488 TYPE 2, GRADE C.

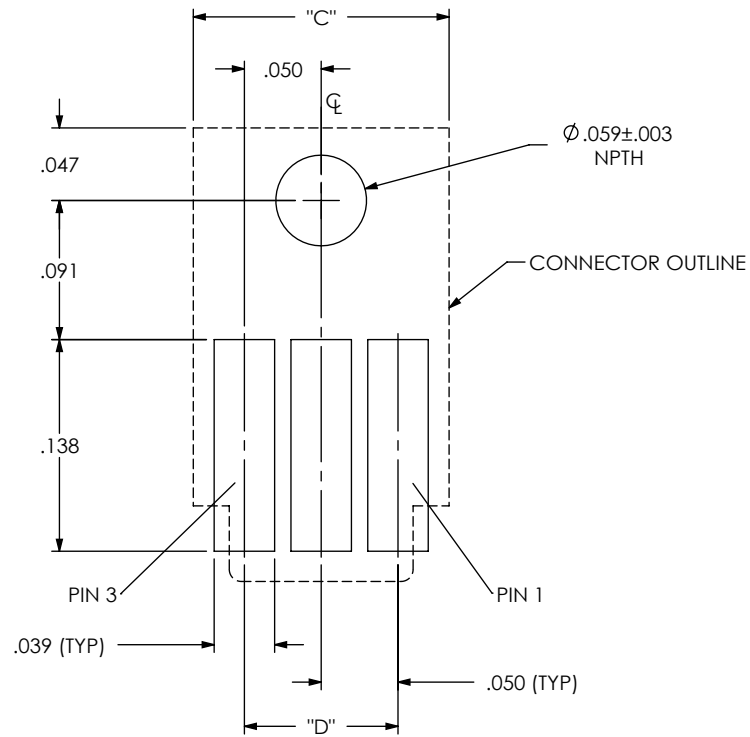


FIG. 5  
-03 POSITION SHOWN  
ALL DIMENSIONS ARE SYMMETRIC ABOUT THE CENTERLINE.

TABLE 2		
No. OF POS	"D"	"E"
-03	.1000	N/A
-04	.1500	N/A
-05	.2000	.100
-06	.2500	.150
-07	.3000	.200
-08	.3500	.250
-09	.4000	.300
-10	.4500	.350
-11	.5000	.400
-12	.5500	.450
-13	.6000	.500
-14	.6500	.550
-15	.7000	.600
-16	.7500	.650
-17	.8000	.700
-18	.8500	.750
-19	.9000	.800
-20	.9500	.850
-21	1.0000	.900
-22	1.0500	.950
-23	1.1000	1.000
-24	1.1500	1.050
-25	1.2000	1.100
-26	1.2500	1.150
-27	1.3000	1.200
-28	1.3500	1.250
-29	1.4000	1.300
-30	1.4500	1.350

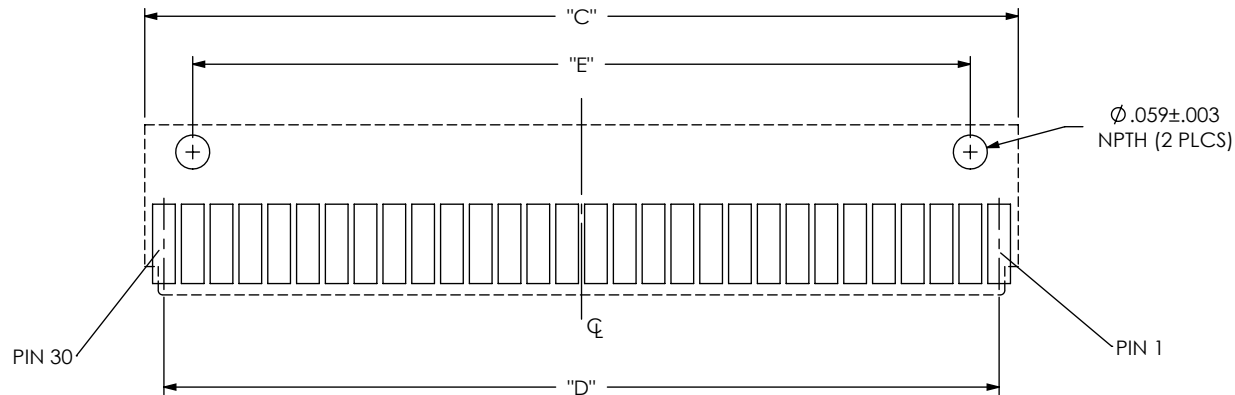


FIG. 6  
-30 POSITION SHOWN  
(SAME AS FIG. 5, EXCEPT AS SHOWN)

PROPRIETARY NOTE

THIS DOCUMENT CONTAINS INFORMATION  
CONFIDENTIAL AND PROPRIETARY TO  
SAMTEC, INC. AND SHALL NOT BE REPRODUCED  
OR TRANSFERRED TO OTHER DOCUMENTS OR  
DISCLOSED TO OTHERS OR USED FOR ANY  
PURPOSE OTHER THAN THAT WHICH IT WAS  
OBTAINED WITHOUT THE EXPRESSED WRITTEN  
CONSENT OF SAMTEC, INC.

**samtec**

520 PARK EAST BLVD, NEW ALBANY, IN 47150  
PHONE: 812-944-6733 FAX: 812-948-5047  
e-Mail: info@SAMTEC.com code 55322