

FIG 1
MTLW-112-XX-XX-S-XXX-XX-XX SHOWN

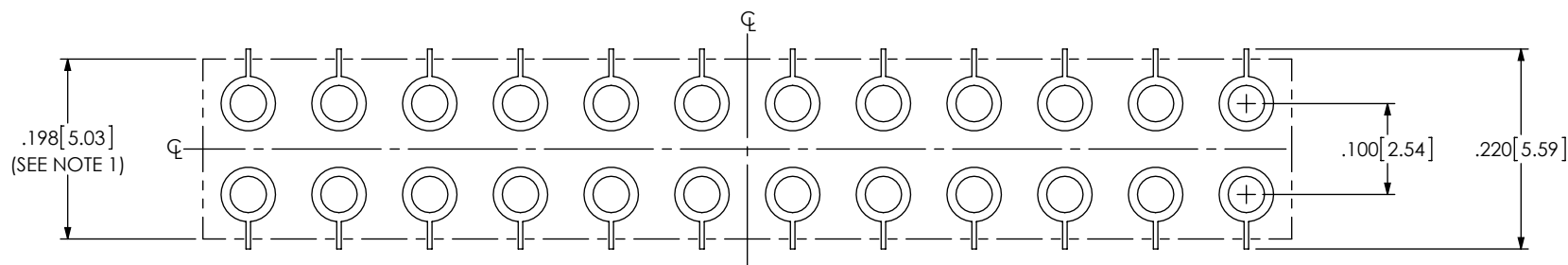


FIG 2
MTLW-112-XX-XX-D-XXX-XX-XX SHOWN
(DIFFERENT AS SHOWN, OTHERWISE SAME AS FIG 1)

NOTE:

- CONNECTOR ENVELOPE DIMENSIONS. OTHER COMPONENTS PLACED ON PCB SHALL AVOID THIS ZONE.
- ALL DIMENSIONS SYMMETRICAL ABOUT THE CENTERLINE.

PROPRIETARY NOTE

THIS DOCUMENT CONTAINS INFORMATION
CONFIDENTIAL AND PROPRIETARY TO
SAMTEC, INC. AND SHALL NOT BE REPRODUCED
OR TRANSFERRED TO OTHER DOCUMENTS OR
DISCLOSED TO OTHERS OR USED FOR ANY
PURPOSE OTHER THAN THAT WHICH IT WAS
OBTAINED WITHOUT THE EXPRESSED WRITTEN
CONSENT OF SAMTEC, INC.

samtec

520 PARK EAST BLVD, NEW ALBANY, IN 47150
PHONE: 812-944-6733 FAX: 812-948-5047
e-Mail info@SAMTEC.com code 55322

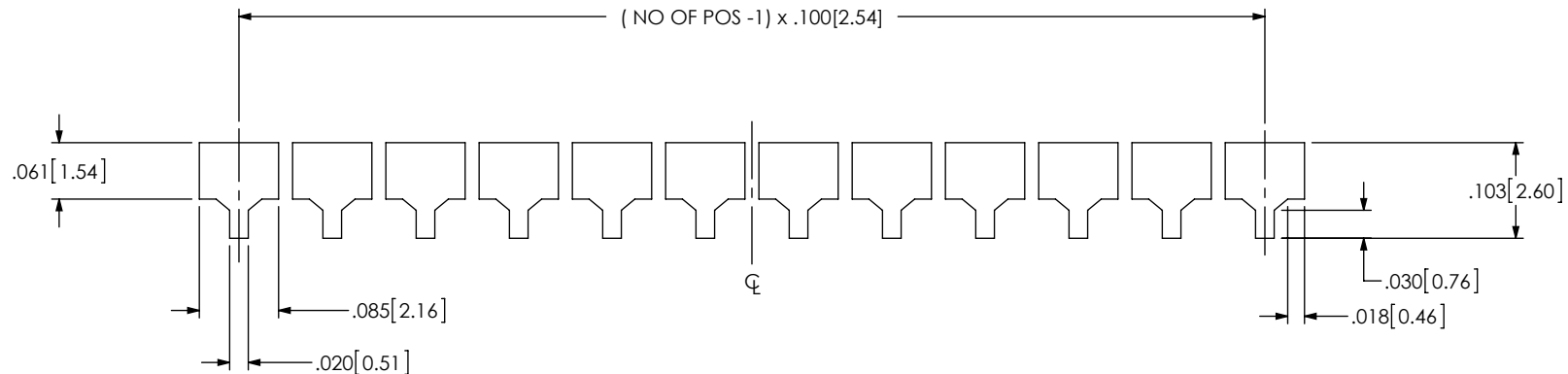


FIG 3
MTLW-112-XX-XX-S-XXX-XX-XX SHOWN

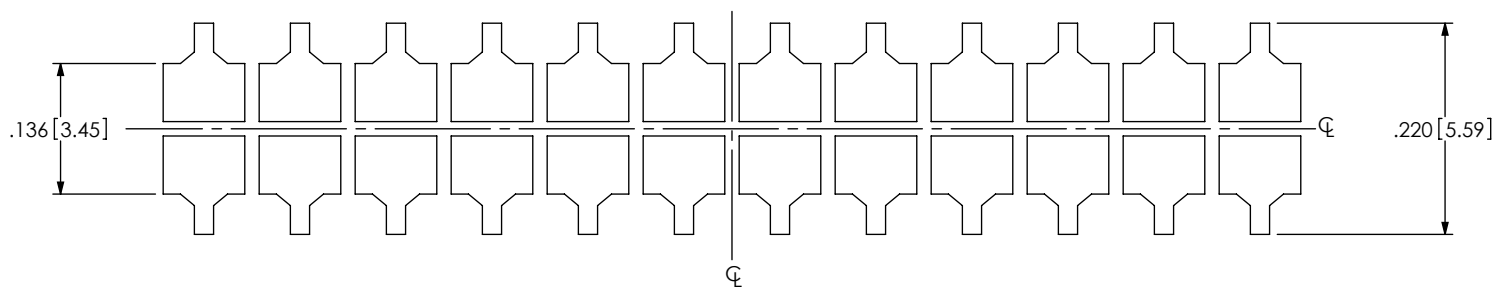


FIG 4
MTLW-112-XX-XX-D-XXX-XX-XX SHOWN
(DIFFERENT AS SHOWN, OTHERWISE SAME AS FIG 3)

NOTE:

1. ALL DIMENSIONS SYMMETRICAL ABOUT THE CENTERLINE.
2. STENCIL THICKNESS TO BE .006 [.152].

PROPRIETARY NOTE

THIS DOCUMENT CONTAINS INFORMATION
CONFIDENTIAL AND PROPRIETARY TO
SAMTEC, INC. AND SHALL NOT BE REPRODUCED
OR TRANSFERRED TO OTHER DOCUMENTS OR
DISCLOSED TO OTHERS OR USED FOR ANY
PURPOSE OTHER THAN THAT WHICH IT WAS
OBTAINED WITHOUT THE EXPRESSED WRITTEN
CONSENT OF SAMTEC, INC.

samtec

520 PARK EAST BLVD, NEW ALBANY, IN 47150
PHONE: 812-944-6733 FAX: 812-948-5047
e-Mail info@SAMTEC.com code 55322