

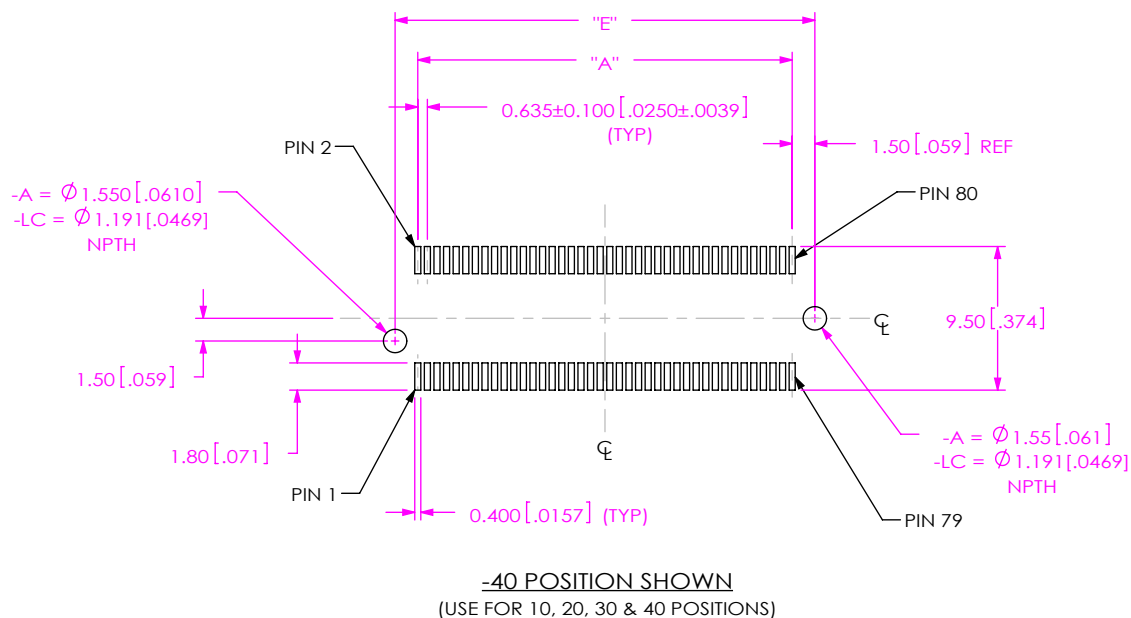
DESIGNED & DIMENSIONED
IN MILLIMETERS [INCHES]

TABLE 2		
POSITION	"A"	"E"
-10	5.72[.225]	8.72[.343]
-20	12.07[.475]	15.07[.593]
-30	18.42[.725]	21.42[.843]
-40	24.77[.975]	27.77[1.093]

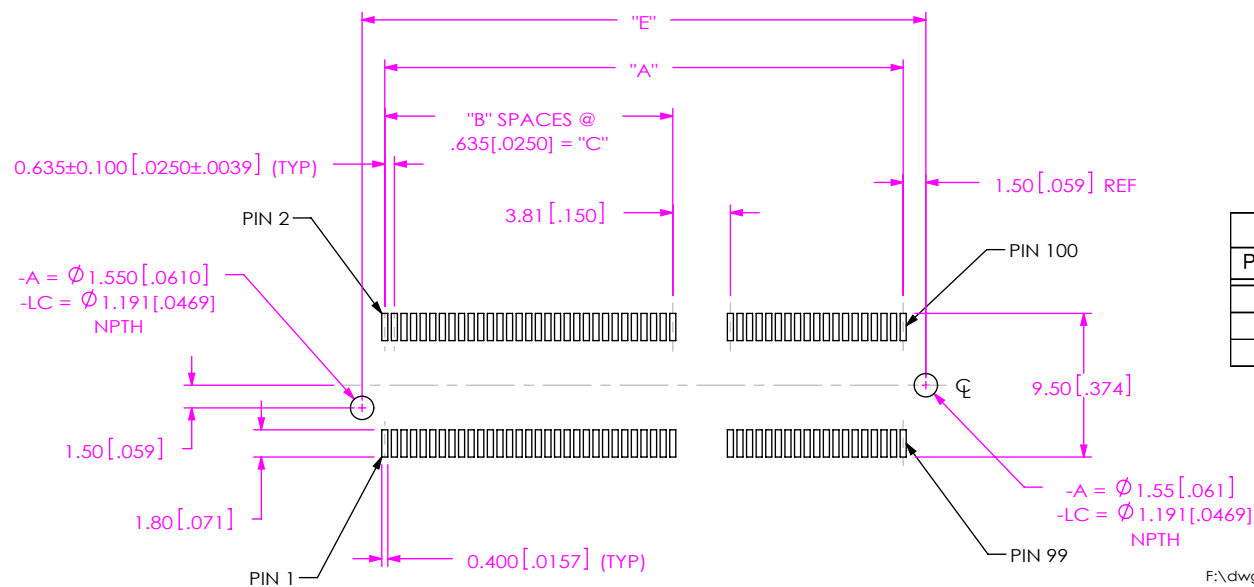


TABLE 1				
POSITION	"A"	"B"	"C"	"E"
-50	34.29[1.350]	30	19.050[.7500]	37.29[1.468]
-60	40.64[1.600]	36	22.860[.9000]	43.64[1.718]
-70	46.99[1.850]	42	26.670[1.0500]	49.99[1.968]

F:\dwg\misc\mktg\footprnt\MEC6-1XX-02-X-DV-XX-FOOTPRINT.SLDDRW

UNLESS OTHERWISE SPECIFIED
TOLERANCES ARE:

DECIMALS

.X: $\pm .3[.01]$
 .XX: $\pm .10[.004]$
 .XXX: $\pm .050[.0020]$

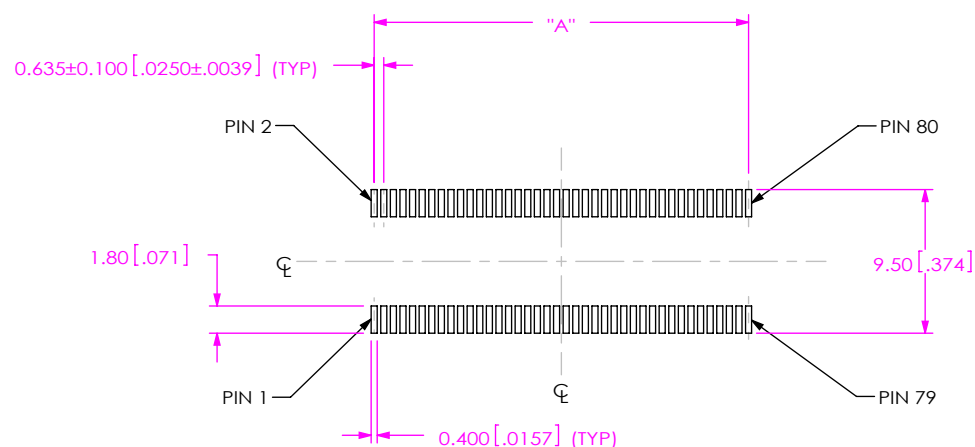
PROPRIETARY NOTE
 THIS DOCUMENT CONTAINS CONFIDENTIAL AND
 PROPRIETARY INFORMATION AND ALL DESIGN,
 MANUFACTURING, REPRODUCTION, USE, PATENT RIGHTS
 AND SALES RIGHTS ARE EXPRESSLY RESERVED BY SAMTEC,
 INC. THIS DOCUMENT SHALL NOT BE DISCLOSED, IN WHOLE
 OR PART, TO ANY UNAUTHORIZED PERSON OR ENTITY NOR
 REPRODUCED, TRANSFERRED OR INCORPORATED IN ANY
 OTHER PROJECT IN ANY MANNER WITHOUT THE EXPRESS
 WRITTEN CONSENT OF SAMTEC, INC.

samtec

520 PARK EAST BLVD, NEW ALBANY, IN 47150
 PHONE: 812-944-6733 FAX: 812-948-5047
 e-Mail: info@SAMTEC.com code: 55322

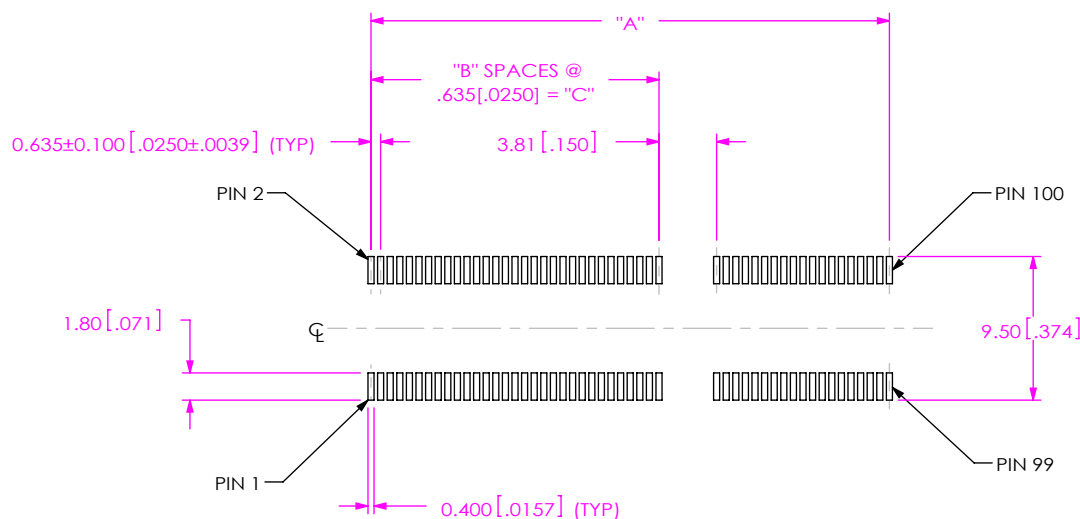
**DESIGNED & DIMENSIONED
IN MILLIMETERS [INCHES]**

NOTE:
STENCIL TO BE 0.15 [.006] THICK.



-40 POSITION SHOWN
(USE FOR 10, 20, 30 & 40 POSITIONS)

TABLE 4	
POSITION	"A"
-10	5.72[.225]
-20	12.07[.475]
-30	18.42[.725]
-40	24.77[.975]



-50 POSITION SHOWN
(USE FOR 50, 60 & 70 POSITIONS)

NOTE:
STENCIL TO BE 0.15 [.006] THICK.

TABLE 3			
POSITION	"A"	"B"	"C"
-50	34.29[1.350]	30	19.05[.750]
-60	40.64[1.600]	36	22.86[.900]
-70	46.99[1.850]	42	26.67[1.050]

PROPRIETARY NOTE
THIS DOCUMENT CONTAINS CONFIDENTIAL AND PROPRIETARY INFORMATION AND ALL DESIGN, MANUFACTURING, REPRODUCTION, USE, PATENT RIGHTS AND SALES RIGHTS ARE EXPRESSLY RESERVED BY SAMTEC, INC. THIS DOCUMENT SHALL NOT BE DISCLOSED, IN WHOLE OR PART, TO ANY UNAUTHORIZED PERSON OR ENTITY NOR REPRODUCED, TRANSFERRED OR INCORPORATED IN ANY OTHER PROJECT IN ANY MANNER WITHOUT THE EXPRESS WRITTEN CONSENT OF SAMTEC, INC.

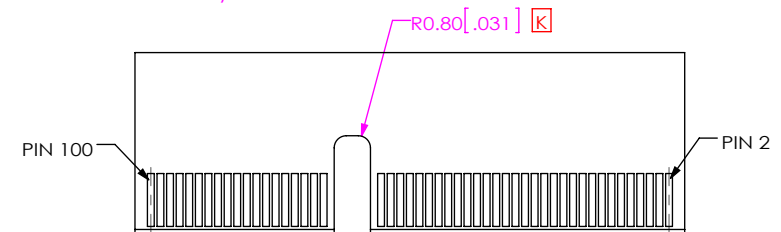
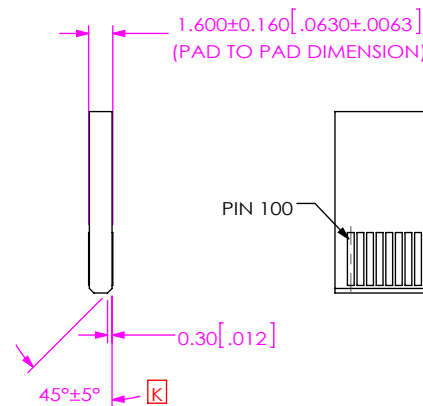
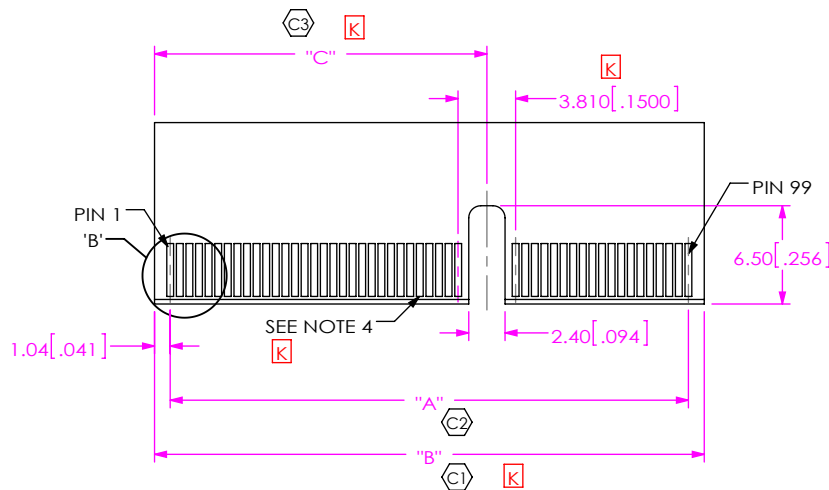
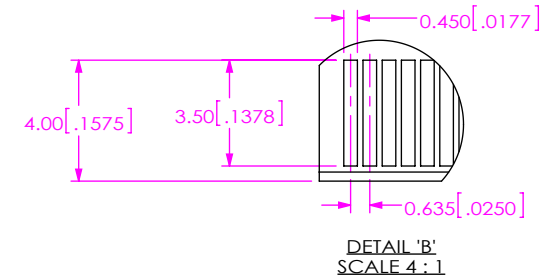
samtec

520 PARK EAST BLVD, NEW ALBANY, IN 47150
PHONE: 812-944-6733 FAX: 812-948-5047
e-Mail: info@SAMTEC.com code: 55322

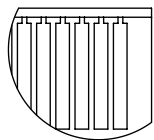
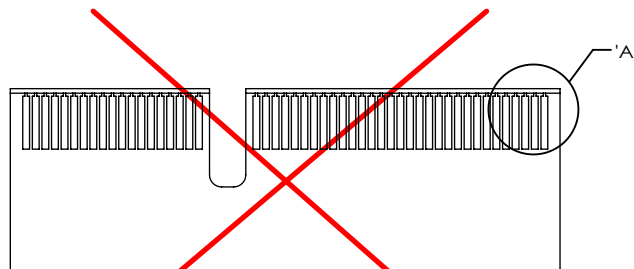
DESIGNED & DIMENSIONED IN MILLIMETERS [INCHES]

POSITION	"A"	"B" ±.076[.003]	"C"
-10	5.715[.2250]	7.788[.307]	N/A
-20	12.065[.4750]	14.138[.557]	N/A
-30	18.415[.7250]	20.488[.807]	N/A
-40	24.765[.9750]	26.838[1.057]	N/A
-50	34.290[1.3500]	36.363[1.432]	21.985 [1.8656]
-60	40.640[1.6000]	42.70[1.681]	25.795 [1.0156]
-70	46.990[1.8500]	49.05[1.931]	29.605 [1.1656]

K



-50 POSITION SHOWN


DETAIL 'A'
SCALE 4:1


SEE NOTE 5

NOTES:

1. C REPRESENTS A CRITICAL DIMENSION.
2. -10, -20 AND -30 CARDS HAVE NO SLOT.
3. ALL DIMENSIONS ARE SYMMETRIC ABOUT THE CENTERLINE.
4. PLATING TO BE .000030 INCHES GOLD WITH A HARDNESS OF 130-200 KNOOPS.
5. FOR PROPER CONTACT REGISTRATION, PLATING BUS TIE TO BE THE WIDTH OF THE EDGE FINGER.

PROPRIETARY NOTE

THIS DOCUMENT CONTAINS CONFIDENTIAL AND PROPRIETARY INFORMATION AND ALL DESIGN, MANUFACTURING, REPRODUCTION, USE, PATENT RIGHTS AND SALES RIGHTS ARE EXPRESSLY RESERVED BY SAMTEC, INC. THIS DOCUMENT SHALL NOT BE DISCLOSED, IN WHOLE OR PART, TO ANY UNAUTHORIZED PERSON OR ENTITY NOR REPRODUCED, TRANSFERRED OR INCORPORATED IN ANY OTHER PROJECT IN ANY MANNER WITHOUT THE EXPRESS WRITTEN CONSENT OF SAMTEC, INC.

samtec

520 PARK EAST BLVD, NEW ALBANY, IN 47150
PHONE: 812-944-6733 FAX: 812-948-5047
e-Mail: info@SAMTEC.com code: 55322