

H	KC	D TERRELL
10/7/2020	ECN-395336	

DESIGNED & DIMENSIONED  
IN MILLIMETERS[INCHES]

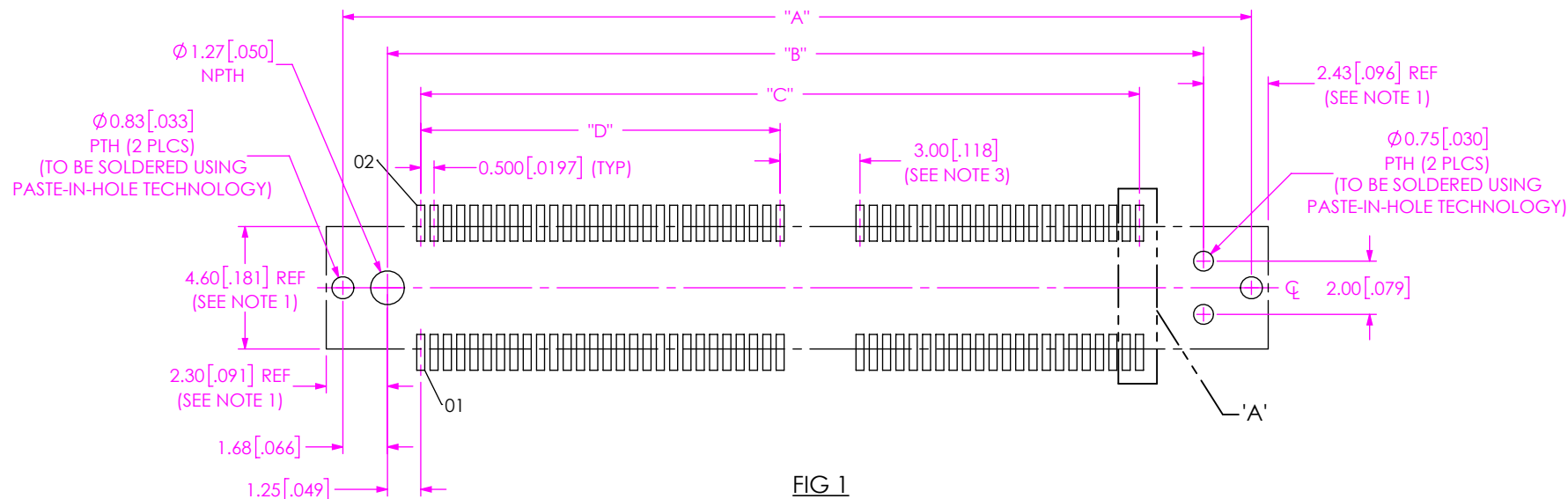
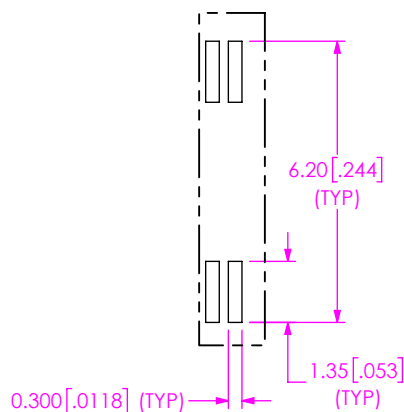


FIG 1  
(MEC5-050-01-X-DV-W1-K FOOTPRINT SHOWN)



DETAIL 'A'  
SCALE 6:1

TABLE 1				
No OF POSITIONS	"A"	"B"	"C"	"D"
-030	21.63 [0.852]	18.16 [0.715]	14.50 [0.571]	N/A
-040	26.63 [1.048]	23.16 [0.912]	19.50 [0.768]	N/A
-050	34.13 [1.344]	30.66 [1.207]	27.00 [1.063]	13.50 [0.531]
-060	39.13 [1.541]	35.66 [1.404]	32.00 [1.260]	16.00 [0.630]
-070	44.13 [1.737]	40.66 [1.601]	37.00 [1.457]	18.50 [0.728]
-080	49.13 [1.934]	45.66 [1.797]	42.00 [1.654]	21.00 [0.827]
-090	54.13 [2.131]	50.66 [1.994]	47.00 [1.850]	23.50 [0.925]
-100	59.13 [2.328]	55.66 [2.191]	52.00 [2.047]	26.00 [1.024]
-110	64.13 [2.525]	60.66 [2.388]	57.00 [2.244]	28.50 [1.122]
-120	69.13 [2.722]	65.66 [2.585]	62.00 [2.441]	31.00 [1.220]
-130	74.13 [2.919]	70.66 [2.782]	67.00 [2.638]	33.50 [1.319]
-140	79.13 [3.115]	75.66 [2.979]	72.00 [2.835]	36.00 [1.417]
-150	84.13 [3.312]	80.66 [3.175]	77.00 [3.031]	38.50 [1.516]

#### NOTES:

- CONNECTOR ENVELOPE DIMENSIONS. OTHER COMPONENTS PLACED ON PCB SHALL AVOID THIS ZONE.
- ALL DIMENSIONS ARE SYMMETRIC ABOUT THE CENTERLINE.
- POLARIZATION RIB IS NOT PRESENT ON -030 & -040 POSITIONS.

F:\dwg\misc\mktg\footprint\MEC5-XXX-XX-X-DV-XX-K-XX-FOOTPRINT.sldrw

UNLESS OTHERWISE SPECIFIED,  
DIMENSIONS ARE IN MILLIMETERS.

TOLERANCES ARE:

DECIMALS ANGLES  
X.X:  $\pm 0.3$  [0.01] 2°  
X.XX:  $\pm 0.13$  [0.005]  
X.XXX:  $\pm 0.051$  [0.0020]

#### PROPRIETARY NOTE

THIS DOCUMENT CONTAINS CONFIDENTIAL AND PROPRIETARY INFORMATION AND ALL DESIGN, MANUFACTURING, REPRODUCTION, USE, PATENT RIGHTS AND SALES RIGHTS ARE EXPRESSLY RESERVED BY SAMTEC, INC. THIS DOCUMENT SHALL NOT BE DISCLOSED, IN WHOLE OR PART, TO ANY UNAUTHORIZED PERSON OR ENTITY NOR REPRODUCED, TRANSFERRED OR INCORPORATED IN ANY OTHER PROJECT IN ANY MANNER WITHOUT THE EXPRESS WRITTEN CONSENT OF SAMTEC, INC.

**samtec**

520 PARK EAST BLVD, NEW ALBANY, IN 47150  
PHONE: 812-944-6733 FAX: 812-948-5047  
e-Mail info@SAMTEC.com code 55322

- NOTE:
- 1. STENCIL TO BE 0.127[.0050] THICK.
  - 2. DIMENSIONS ARE FOR 1.57[.062] THICKNESS BOARD.

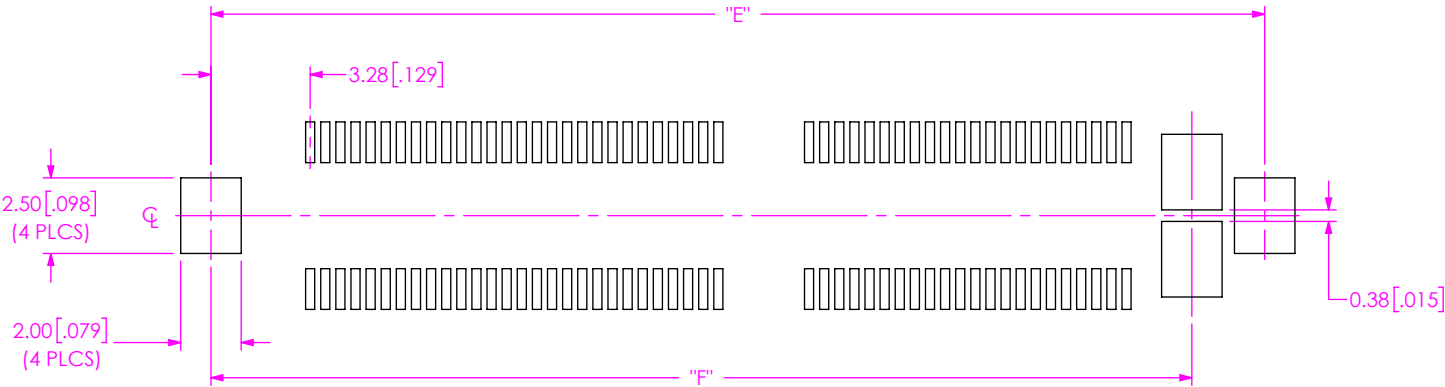


FIG 2  
(MEC5-050-01-X-DV-W1-K STENCIL SHOWN)  
(DIFFERENT AS SHOWN, OTHERWISE SAME AS FIG 1)

TABLE 2		
No OF POSITIONS	"E"	"F"
-030	22.35 [0.880]	19.94 [0.785]
-040	27.35 [1.077]	24.94 [0.982]
-050	34.85 [1.372]	32.44 [1.277]
-060	39.85 [1.569]	37.44 [1.474]
-070	44.85 [1.766]	42.44 [1.671]
-080	49.85 [1.963]	47.44 [1.868]
-090	54.85 [2.159]	52.44 [2.064]
-100	59.85 [2.356]	57.44 [2.261]
-110	64.85 [2.553]	62.44 [2.458]
-120	69.85 [2.750]	67.44 [2.655]
-130	74.85 [2.947]	72.44 [2.852]
-140	79.85 [3.144]	77.44 [3.049]
-150	84.85 [3.341]	82.44 [3.246]

• PROPRIETARY NOTE •  
THIS DOCUMENT CONTAINS CONFIDENTIAL AND PROPRIETARY INFORMATION AND ALL DESIGN, MANUFACTURING, REPRODUCTION, USE, PATENT RIGHTS AND SALES RIGHTS ARE EXPRESSLY RESERVED BY SAMTEC, INC. THIS DOCUMENT SHALL NOT BE DISCLOSED, IN WHOLE OR PART, TO ANY UNAUTHORIZED PERSON OR ENTITY NOR REPRODUCED, TRANSFERRED OR INCORPORATED IN ANY OTHER PROJECT IN ANY MANNER WITHOUT THE EXPRESS WRITTEN CONSENT OF SAMTEC, INC.



520 PARK EAST BLVD, NEW ALBANY, IN 47150  
PHONE: 812-944-6733 FAX: 812-948-5047  
e-Mail info@SAMTEC.com code 55322

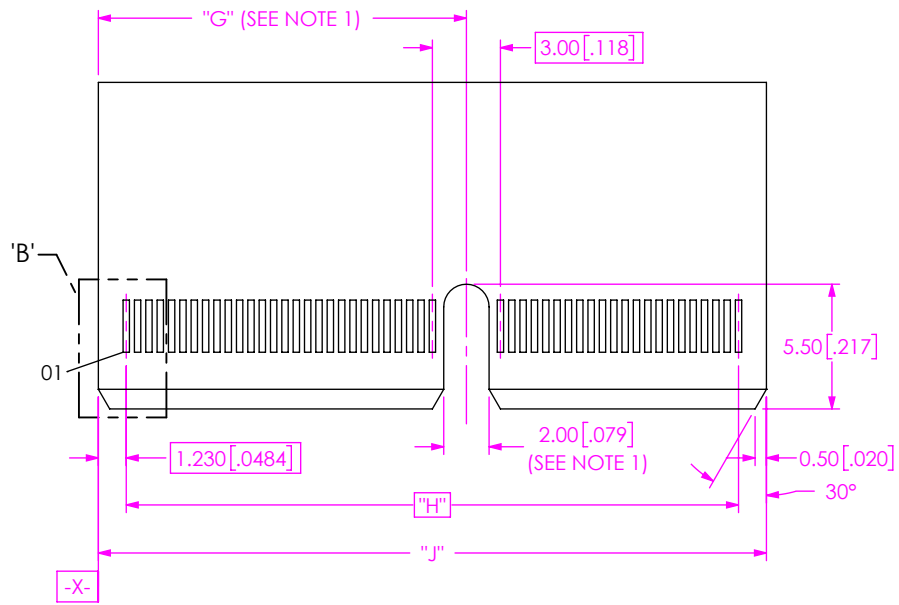
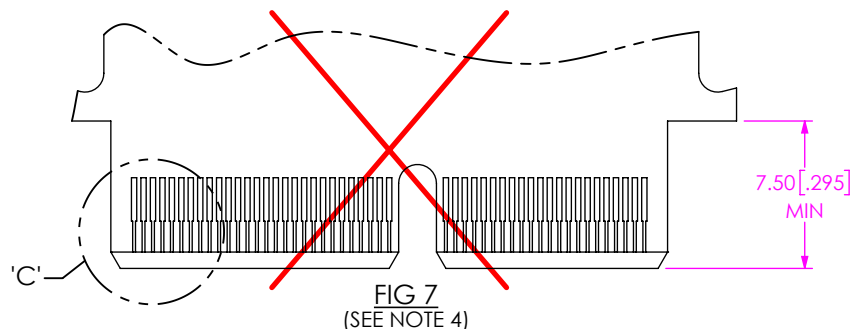
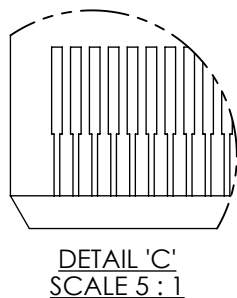
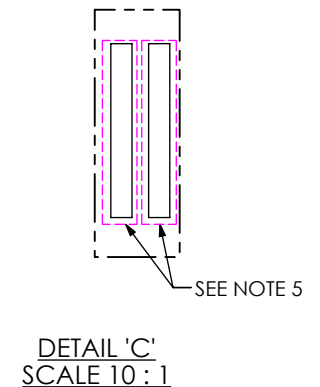
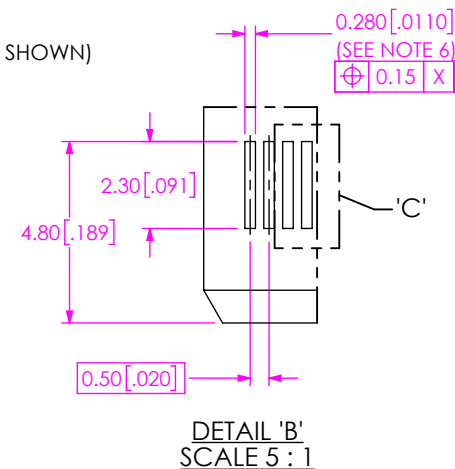


FIG 3  
(MEC5-050-01-X-DV-W1-K MATING CARD SHOWN)

TABLE 3			
No OF POSITIONS	"G"	"H"	"J"
-030	N/A	14.50 [0.571]	16.96 [0.668]
-040	N/A	19.50 [0.768]	21.96 [0.865]
-050	16.23 [0.639]	27.00 [1.063]	29.46 [1.160]
-060	18.73 [0.737]	32.00 [1.260]	34.46 [1.357]
-070	21.23 [0.836]	37.00 [1.457]	39.46 [1.554]
-080	23.73 [0.934]	42.00 [1.654]	44.46 [1.750]
-090	26.23 [1.033]	47.00 [1.850]	49.46 [1.947]
-100	28.73 [1.131]	52.00 [2.047]	54.46 [2.144]
-110	31.23 [1.230]	57.00 [2.244]	59.46 [2.341]
-120	33.73 [1.328]	62.00 [2.441]	64.46 [2.538]
-130	36.23 [1.426]	67.00 [2.638]	69.46 [2.735]
-140	38.73 [1.525]	72.00 [2.835]	74.46 [2.931]
-150	41.23 [1.623]	77.00 [3.031]	79.46 [3.128]



NOTES:

1. -30 AND -40 POSITION CARDS HAVE NO SLOT.
2. ALL DIMENSIONS ARE SYMMETRIC ABOUT THE CENTERLINE.
3. PLATING TO BE .000030 INCHES GOLD WITH A HARDNESS OF 130-200 KNOOP PER ASTM B 488 TYPE 2, GRADE C.
4. FOR PROPER CONTACT REGISTRATION, PLATING BUS TIE TO BE THE WIDTH OF THE EDGE FINGER.
5. SOLDERMASK BETWEEN THE PADS IS RECOMMENDED.
6. SEE MEC5 PRODUCT SPEC FOR SIGNAL INTEGRITY RECOMMENDATIONS.

PROPRIETARY NOTE  
THIS DOCUMENT CONTAINS CONFIDENTIAL AND PROPRIETARY INFORMATION AND ALL DESIGN, MANUFACTURING, REPRODUCTION, USE, PATENT RIGHTS AND SALES RIGHTS ARE EXPRESSLY RESERVED BY SAMTEC, INC. THIS DOCUMENT SHALL NOT BE DISCLOSED, IN WHOLE OR PART, TO ANY UNAUTHORIZED PERSON OR ENTITY NOR REPRODUCED, TRANSFERRED OR INCORPORATED IN ANY OTHER PROJECT IN ANY MANNER WITHOUT THE EXPRESS WRITTEN CONSENT OF SAMTEC, INC.

**samtec**

520 PARK EAST BLVD, NEW ALBANY, IN 47150  
PHONE: 812-944-6733 FAX: 812-948-5047  
e-Mail info@SAMTEC.com code 55322