

DESIGNED & DIMENSIONED
IN MILLIMETERS[INCHES]

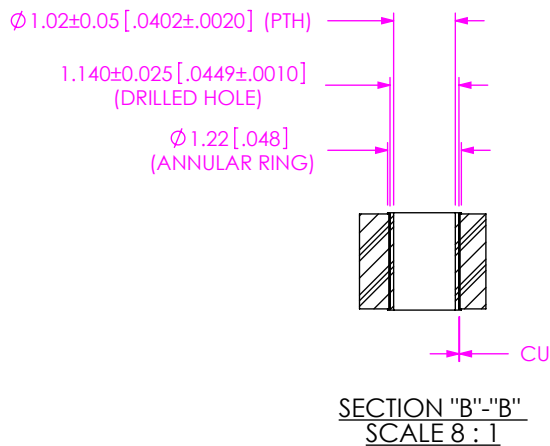
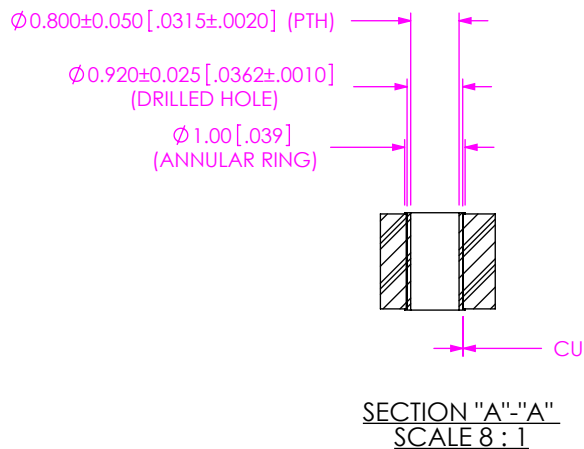
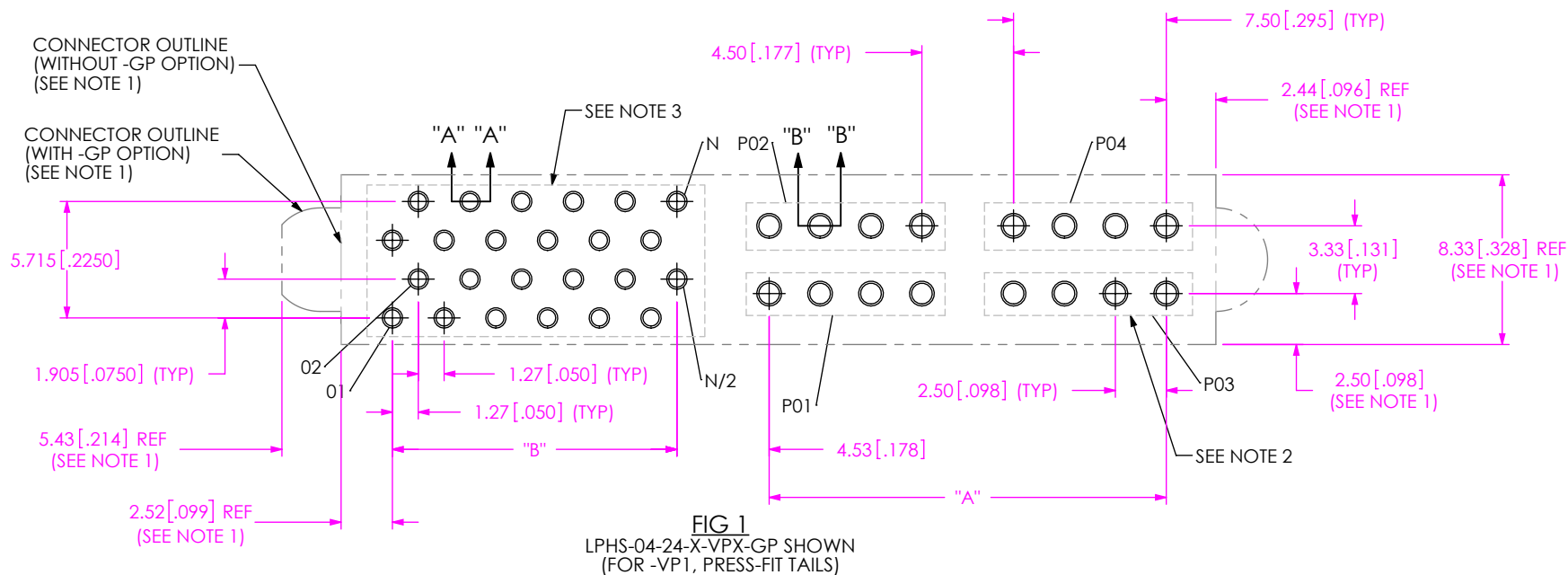


TABLE 3		
TIN	Cu	0.03[.001] MIN
	Sn	0.010[.0004] MIN
GOLD	Cu	0.03[.001] MIN
	Ni	0.0030[.00012]
	Au	0.00076[.000003] MIN
SILVER	Cu	0.03[.001] MIN
	Ag	0.0010[.00004] MIN

TABLE 1	
POWER POS	"A"
-02	N/A
-04	19.50 [0.768]
-06	31.50 [1.240]
-08	43.50 [1.713]
-10	55.50 [2.185]
*-12	67.50 [2.657]
*-14	79.50 [3.130]

(* = NOT TOOLED)

TABLE 2	
SIGNAL POS	"B"
-12	6.35 [0.250]
-16	8.89 [0.350]
-20	11.43 [0.450]
-24	13.97 [0.550]
-28	16.51 [0.650]
-32	19.05 [0.750]
*-36	21.59 [0.850]
*-40	24.13 [0.950]

(* = NOT TOOLED)

NOTES:

1. CONNECTOR ENVELOPE DIMENSIONS. OTHER COMPONENTS PLACED ON PCB SHALL AVOID THIS ZONE.
2. EACH POWER POSITION USES 4 PTH'S PER POSITION.
3. FOR SIGNAL POSITIONS.

PROPRIETARY NOTE
THIS DOCUMENT CONTAINS CONFIDENTIAL AND PROPRIETARY INFORMATION AND ALL DESIGN, MANUFACTURING, REPRODUCTION, USE, PATENT RIGHTS AND SALES RIGHTS ARE EXPRESSLY RESERVED BY SAMTEC, INC. THIS DOCUMENT SHALL NOT BE DISCLOSED, IN WHOLE OR PART, TO ANY UNAUTHORIZED PERSON OR ENTITY NOR REPRODUCED, TRANSFERRED OR INCORPORATED IN ANY OTHER PROJECT IN ANY MANNER WITHOUT THE EXPRESS WRITTEN CONSENT OF SAMTEC, INC.

samtec

520 PARK EAST BLVD, NEW ALBANY, IN 47150
PHONE: 812-944-6733 FAX: 812-948-5047
e-Mail info@SAMTEC.com code 55322

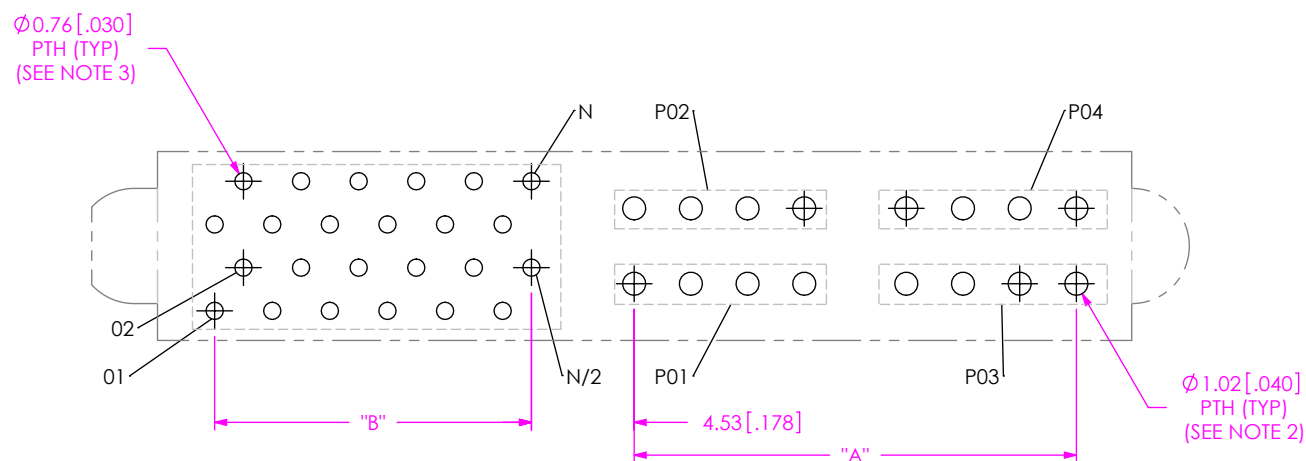


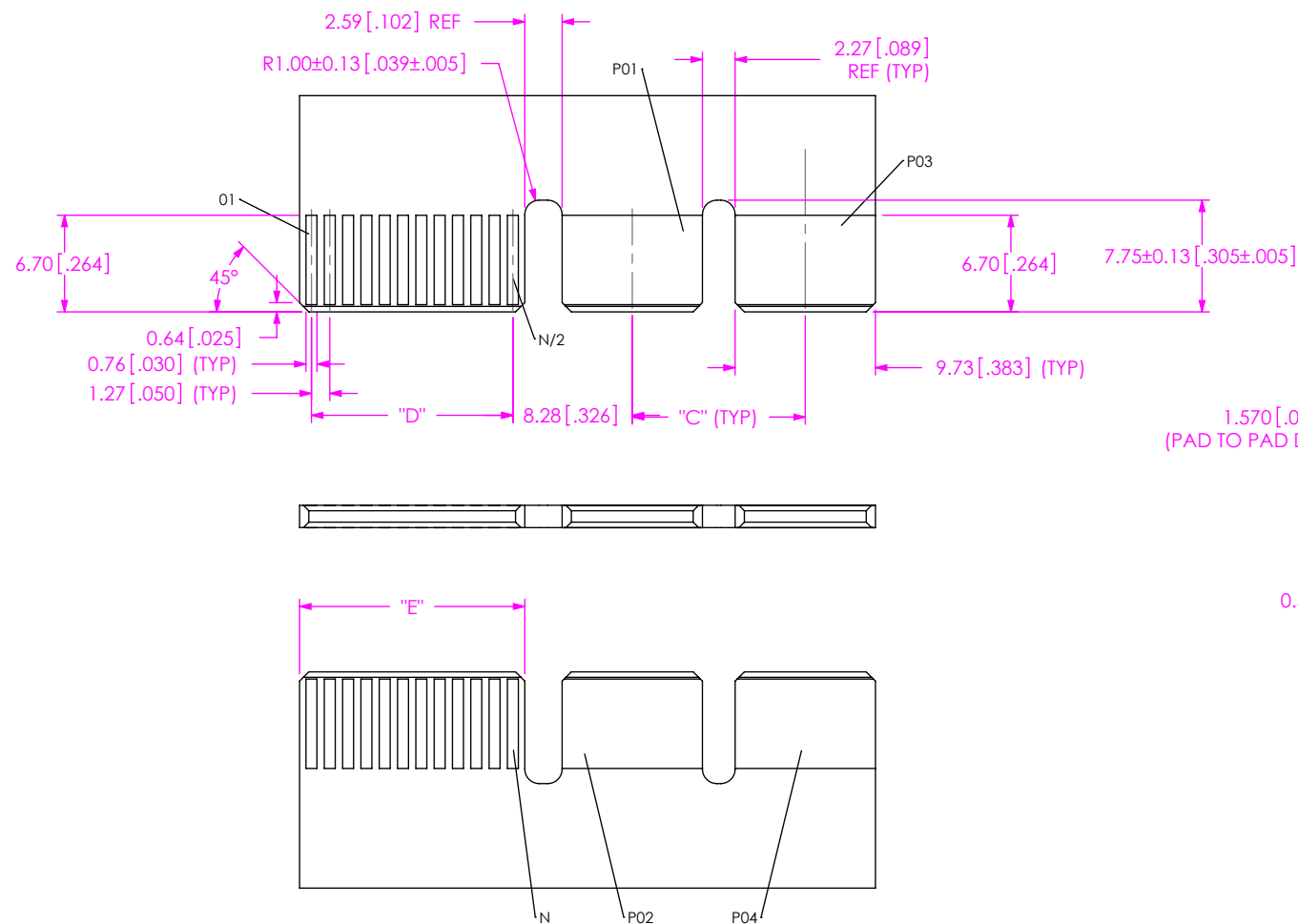
FIG 2
LPHS-04-24-X-VTX-GP SHOWN
(FOR -VT1, THRU HOLE TAIL)

* PROPRIETARY NOTE *

THIS DOCUMENT CONTAINS CONFIDENTIAL AND PROPRIETARY INFORMATION AND ALL DESIGN, MANUFACTURING, REPRODUCTION, USE, PATENT RIGHTS AND SALES RIGHTS ARE EXPRESSLY RESERVED BY SAMTEC, INC. THIS DOCUMENT SHALL NOT BE DISCLOSED, IN WHOLE OR PART, TO ANY UNAUTHORIZED PERSON OR ENTITY NOR REPRODUCED, TRANSFERRED OR INCORPORATED IN ANY OTHER PROJECT IN ANY MANNER WITHOUT THE EXPRESS WRITTEN CONSENT OF SAMTEC, INC.

samtec

520 PARK EAST BLVD, NEW ALBANY, IN 47150
PHONE: 812-944-6733 FAX: 812-948-5047
e-Mail info@SAMTEC.com code 55322



1.570 [.0618]
(PAD TO PAD DIMENSION)

0.50 [.020]
45°

TABLE 4	
POWER POS	"C"
-02	N/A
-04	12.00 [0.472]
-06	24.00 [0.945]
-08	36.00 [1.417]
-10	48.00 [1.890]
*-12	60.00 [2.362]
*-14	72.00 [2.835]

(* = NOT TOOLED)

TABLE 5		
SIGNAL POS	"D"	"E"
-12	6.35 [0.250]	8.00 [0.315]
-16	8.89 [0.350]	10.54 [0.415]
-20	11.43 [0.450]	13.08 [0.515]
-24	13.97 [0.550]	15.62 [0.615]
-28	16.51 [0.650]	18.16 [0.715]
-32	19.05 [0.750]	20.70 [0.815]
*-36	21.59 [0.850]	23.24 [0.915]
*-40	24.13 [0.950]	25.78 [1.015]

E

(* = NOT TOOLED)

NOTES:

1. PLATING TO BE .000030 INCHES GOLD WITH A HARDNESS 130 200 KNOOP PER ASTM B 488 TYPE 2, GRADE C.

PROPRIETARY NOTE
THIS DOCUMENT CONTAINS CONFIDENTIAL AND PROPRIETARY INFORMATION AND ALL DESIGN, MANUFACTURING, REPRODUCTION, USE, PATENT RIGHTS AND SALES RIGHTS ARE EXPRESSLY RESERVED BY SAMTEC, INC. THIS DOCUMENT SHALL NOT BE DISCLOSED, IN WHOLE OR PART, TO ANY UNAUTHORIZED PERSON OR ENTITY NOR REPRODUCED, TRANSFERRED OR INCORPORATED IN ANY OTHER PROJECT IN ANY MANNER WITHOUT THE EXPRESS WRITTEN CONSENT OF SAMTEC, INC.

samtec

520 PARK EAST BLVD, NEW ALBANY, IN 47150
PHONE: 812-944-6733 FAX: 812-948-5047
e-Mail info@SAMTEC.com code 55322