

(LAYOUT FOR IP5-RA TO IJ5C [CABLE ASSY] MATING)

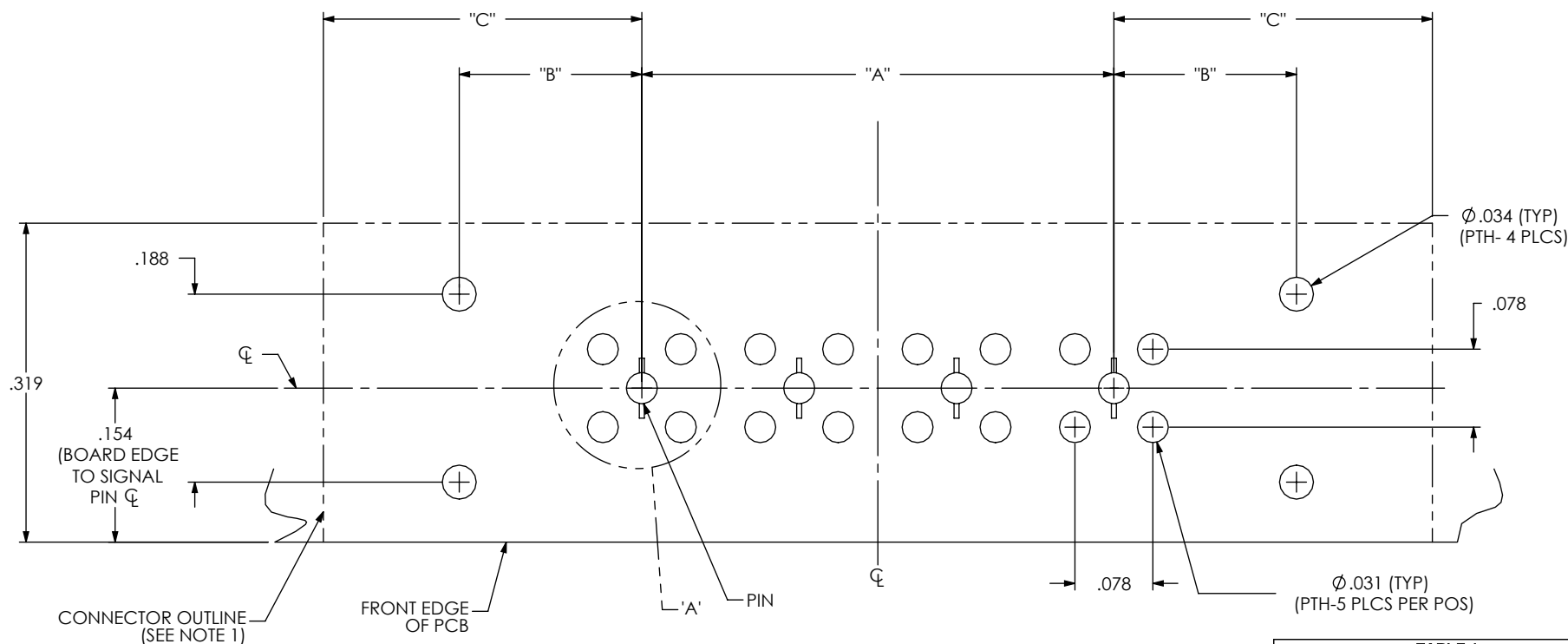
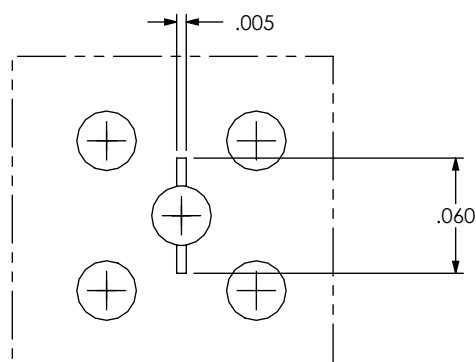


FIG.1
(1 ROW x 4 POSITION SHOWN)
(LAYOUT FOR IP5-RA TO IJ5C [CABLE ASSY] MATING)



DETAIL 'A'
SCALE 10:1

TABLE 1				
No. POS / ROWS	OPTION	"A"	"B"	"C"
-1	STD.	N/A	0.183	0.229
	-L		0.257	0.319
-2	STD.	0.1575	0.183	0.229
	-L		0.257	0.319
-4	STD.	0.4725	0.183	0.229
	-L		0.257	0.319
-8	STD.	1.1025	0.183	0.229
	-L		0.257	0.319

(* = NOT TOOLED)

NOTES:

1. STENCIL TO BE .0050[.127] THICK
2. TO ACHIEVE THE DESIRED SOLDER VOLUME, WE RECOMMEND THAT SOLDER PASTE BE PRINTED ON BOTH SIDES OF THE PCB USING THE LAYOUTS IN FIGURES 3.
3. SINGLE SIDE SOLDER PRINTING MAY BE POSSIBLE BY ADJUSTING PRINTER PROCESS VARIABLES, CONTACT SAMTEC'S INTERCONNECT PROCESSING GROUP AT (800) SAMTEC9 OR IPG@SAMTEC.COM FOR MORE INFORMATION.

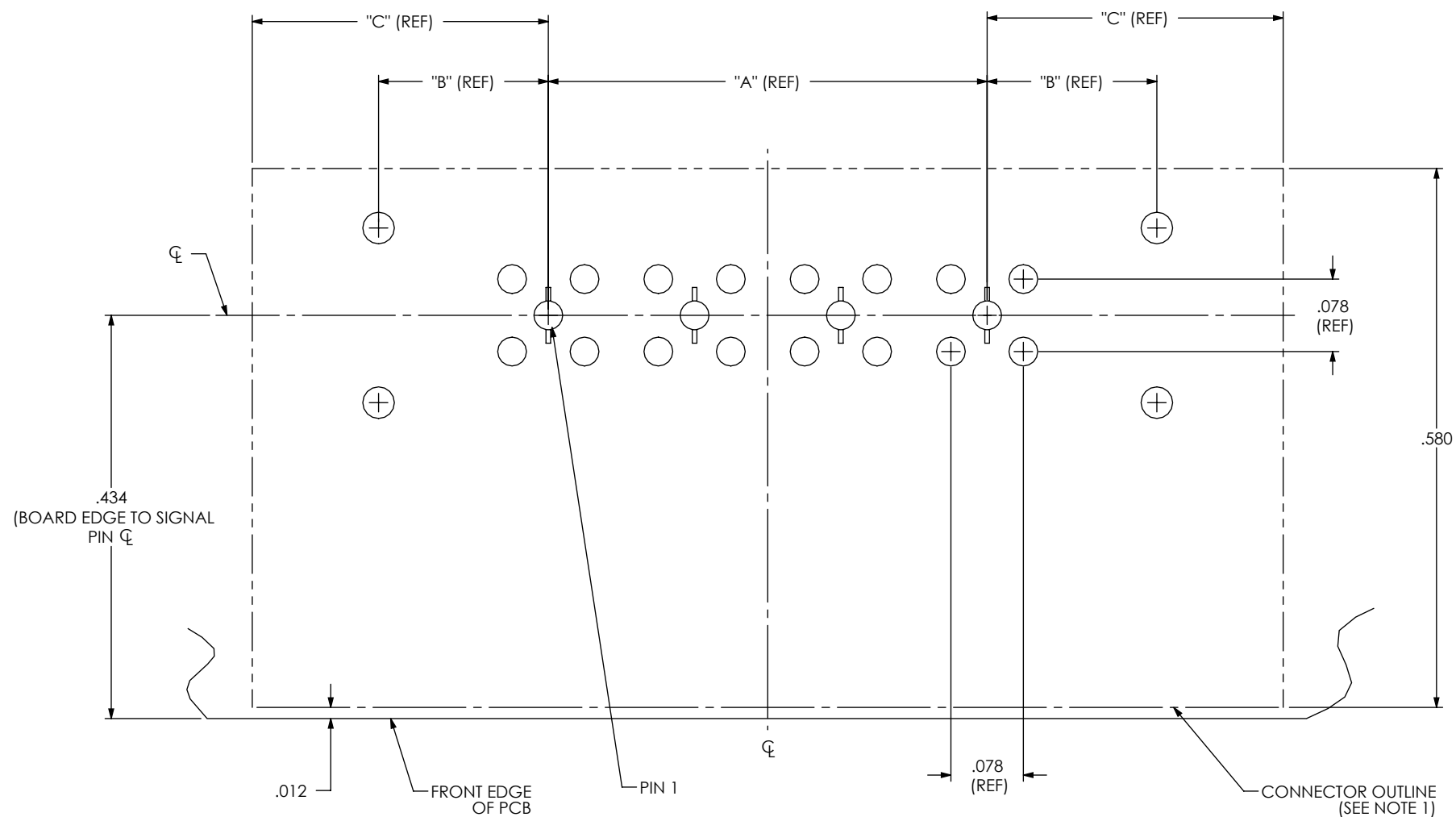
PROPRIETARY NOTE

THIS DOCUMENT CONTAINS INFORMATION CONFIDENTIAL AND PROPRIETARY TO SAMTEC, INC. AND SHALL NOT BE REPRODUCED OR TRANSFERRED TO OTHER DOCUMENTS OR DISCLOSED TO OTHERS OR USED FOR ANY PURPOSE OTHER THAN THAT WHICH IT WAS OBTAINED WITHOUT THE EXPRESSED WRITTEN CONSENT OF SAMTEC, INC.

samtec

520 PARK EAST BLVD, NEW ALBANY, IN 47150
PHONE: 812-944-6733 FAX: 812-948-5047
e-Mail: info@SAMTEC.com code: 55322

(LAYOUT FOR IP5-RA TO IJ5-DV MATING)



PROPRIETARY NOTE

THIS DOCUMENT CONTAINS INFORMATION
CONFIDENTIAL AND PROPRIETARY TO
SAMTEC, INC. AND SHALL NOT BE REPRODUCED
OR TRANSFERRED TO OTHER DOCUMENTS OR
DISCLOSED TO OTHERS OR USED FOR ANY
PURPOSE OTHER THAN THAT WHICH IT WAS
OBTAINED WITHOUT THE EXPRESSED WRITTEN
CONSENT OF SAMTEC, INC.

samtec

520 PARK EAST BLVD, NEW ALBANY, IN 47150
PHONE: 812-944-6733 FAX: 812-948-5047
e-Mail: info@SAMTEC.com code: 55322

NOTES:

1. STENCIL TO BE .0050[.127] THICK
2. TO ACHIEVE THE DESIRED SOLDER VOLUME, WE RECOMMEND THAT SOLDER PASTE BE PRINTED ON BOTH SIDES OF THE PCB USING THE LAYOUTS IN FIGURES 3.
3. SINGLE SIDE SOLDER PRINTING MAY BE POSSIBLE BY ADJUSTING PRINTER PROCESS VARIABLES. CONTACT SAMTEC'S INTERCONNECT PROCESSING GROUP AT (800) SAMTEC9 OR IPG@SAMTEC.COM FOR MORE INFORMATION.

