



Compact Current Transducer

Rev 3.3

Maximum Ratings ($T_A = 25^\circ\text{C}$)

Parameter	Symbol	Value	Unit
Operating temperature	T_A	-40 to +120	$^\circ\text{C}$
Storage temperature	T_{stg}	-65 to +150	$^\circ\text{C}$
Supply voltage	V_s	8	V
Output sinking current	I_o	10	mA
Measured current	I_m	Limited only by conductor	A



Raztec Sensors
NEW ZEALAND LTD

RAZCL-104OKAN

Characteristics

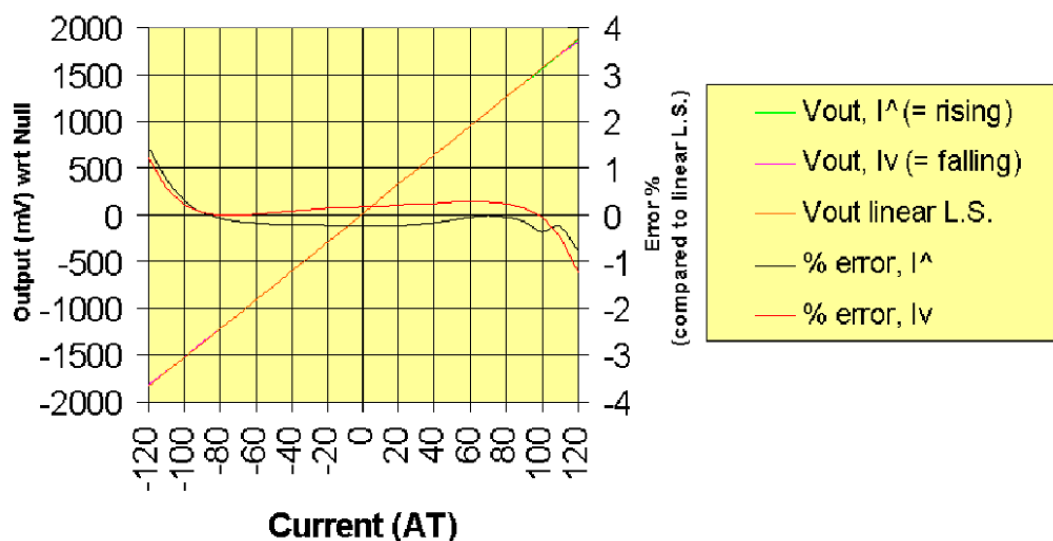
($T_A = 25^\circ\text{C}$, $V_S = 5\text{V}$)

Parameter	Symbol	Lower Limit	Typical	Upper Limit	Unit
Supply current (no load)	I_S		9	11.5	mA
Supply voltage	V_S	4.5	5.0	5.5	V
Current range for $<\pm 1\%$ linearity error (-40 to $+110^\circ\text{C}$)	I_m	± 100			A
Power-on settling time to 99%	t_{po}		50		μs
Null output	V_o	2.488	2.5	2.512	V
Transfer function (-40 to $+110^\circ\text{C}$)	$\Delta V/I$	7	15	18	mV/A
Combined non-linearity and hysteresis error ($\pm 100\text{A}$, -40 to $+85^\circ\text{C}$)				1.0	%
Null drift due to temperature change	TC $\Delta V_o/V_o$			± 0.25	mV/k
Gain change due to temperature change	TCG	0.08	0.12	0.16	%/K
Risetime (0 to 20AT)	t_r			14	μs
Frequency response	f-3dB		20		kHz
Output resistance	R_o		3		Ω

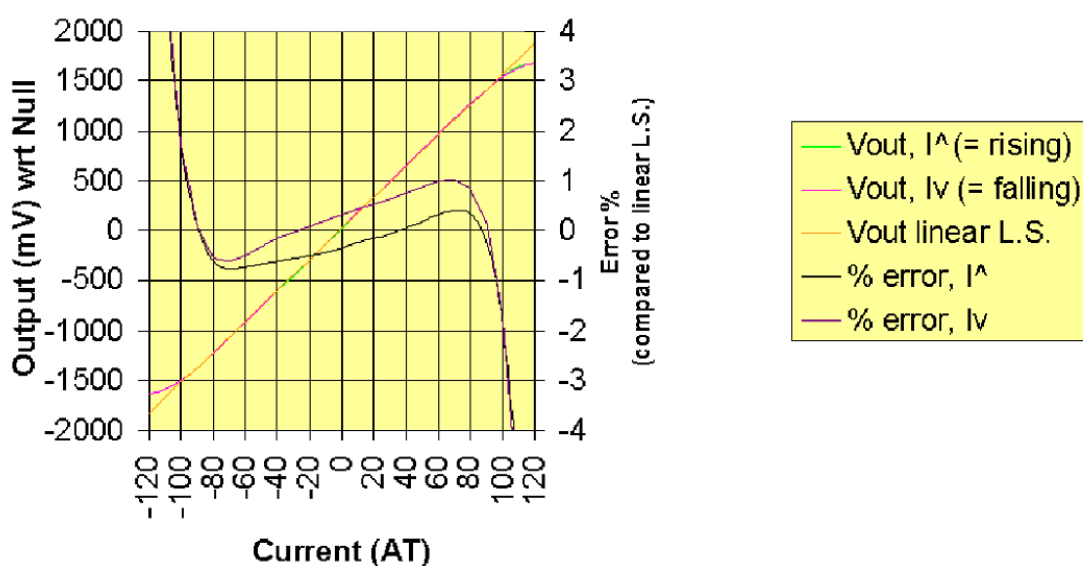


Raztec Sensors
NEW ZEALAND LTD

**RAZCL-104OKAN at 30°C ,
Typical Transfer function.**

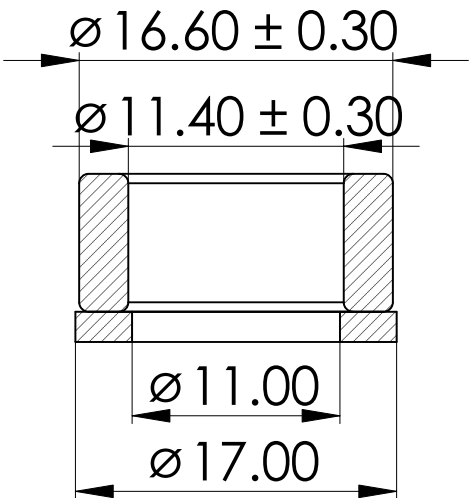
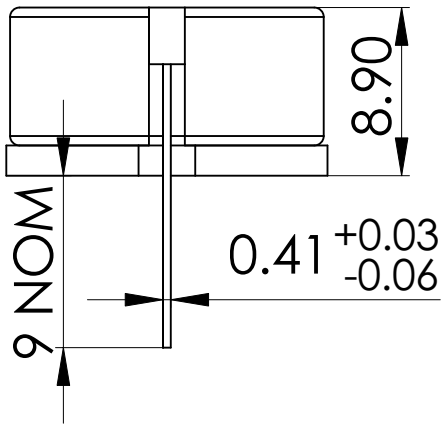
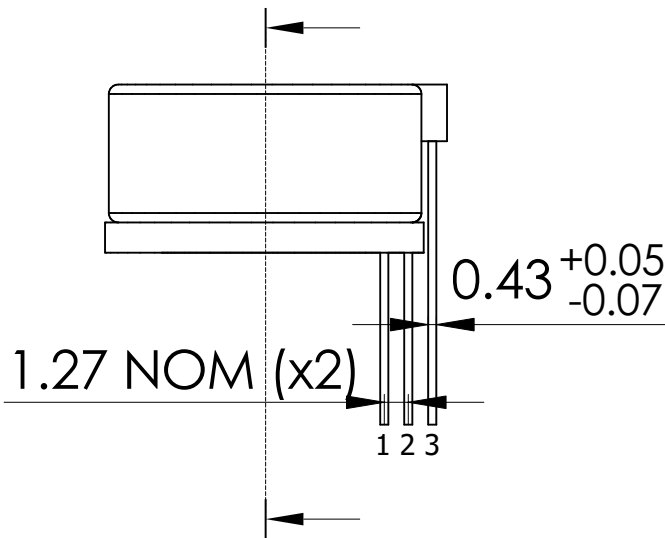
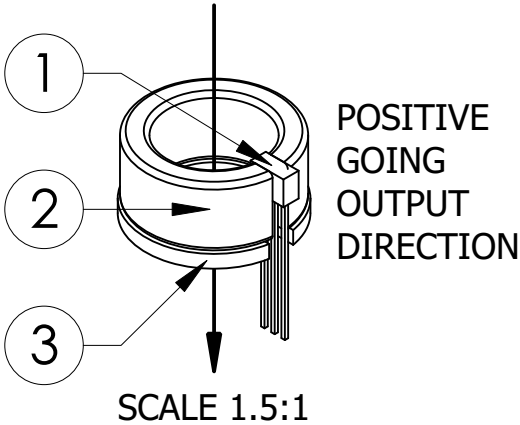
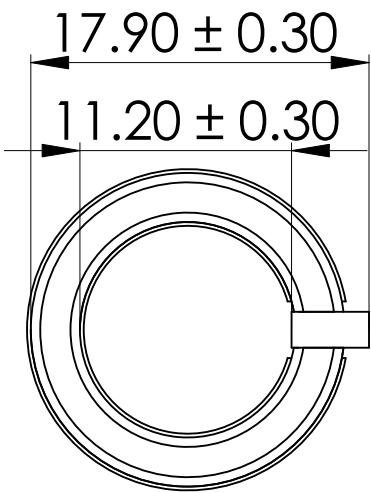


**RAZCL-104OKAN at 100°C ,
Typical Transfer function.**



Raztec Sensors
NEW ZEALAND LTD

NOTES UNLESS OTHERWISE SPECIFIED
1. ALL DIMENSIONS IN MM



ITEM	DESCRIPTION
1	HALL MAGNETIC SENSOR
2	FLUX CONCENTRATOR
3	ADHESIVE FOAM PAD

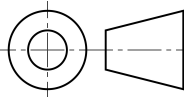


TOLERANCE UNLESS OTHERWISE SPECIFIED ± 0.20

DRAWN: TG SIZE: A4

APPROVED: WP DATE: 30/11/23

RAZCL-104OKAN



SCALE: 2.5:1

REVISION: R3.3

PIN NUMBER	DESCRIPTION
1	Vs
2	GND
3	OUTPUT

Raztec Sensors was formed in 1992 and since then have been designing, manufacturing and supplying Hall Effect current transducers to some of the World's most critical and demanding users.

Over the past twenty-plus years many millions of our current transducers have been designed into failure intolerant applications where Raztec's refusal to accept anything other than the very highest standard of manufacturing excellence (ISO9001:2015 approved) has resulted in a reputation that is the envy of companies significantly larger and perhaps better known.

Who are our customers?

Raztec Sensors are recognized by many of our customers for our ability to provide top-quality performance at a very effective market price. Working with clients such as Dunkermotoren/AMETEK, Siemens, Wrightspeed, Komatsu, Panasonic Electric Works, Marincos, Techna-Tool, Metropolitan Pumps, Dynamic Controls, has provided us the opportunity to engineer solutions that are specific to our clients' application. This has resulted in a current transducer that provides exactly the output required for perfect control of the customer's specific application - at the most competitive price possible.

Need a custom solution?

Raztec are specialists in designing customised Hall Effect current sensors to suit almost any type of application. A large proportion of the products we sell are customised towards our customer's needs. If you have a particular need that an off-the-shelf sensor just can't meet, then contact us about designing a current sensor to meet your requirements.



Raztec New Zealand Ltd operates a continuous product improvement program, therefore information contained in our datasheets may not reflect all current features. For clarification please contact sales@raztec.co.nz



Raztec Sensors
NEW ZEALAND LTD

Custom Current Sensing Solutions