



# Product Change Notification

## TE Connectivity

Product Change Notification: P-24-025800

PCN Date: 27-FEB-24

TE would like to inform you of the following change(s) to the listed TE Connectivity Product. In case of any further questions about this change(s), please contact your TE Connectivity Sales Engineer. Affected part, drawing and/or specification numbers are listed on the attached sheet(s).

### General Product Description:

Visual changes announcement of new 623 series 12&17 Pos. insulation inserts

### Description of Changes

We strive to continuously improve our products. In this context, we have changed the external appearance and labeling of the contact chambers of the insulating bodies from our 623 series. These modifications are purely cosmetic and have no influence on the performance data or the use of the products. Of course, compatibility with the relevant connector components such as housings and contacts is guaranteed without restriction. The attached components and FG PNs are affected.

### Other attachments:

[623 compare overviews](#)

### Reason for Changes:

Product improvement. Product simplification of existing variants by implementing of separated cavities for each code type and simplifying of inner and outer shape

### Estimated Dates:

Last Order Date (Obsolete Parts Only):

First Date To Ship (Changed Parts Only):

Last Ship Date (Obsolete Parts Only):

Last Date for Mixed Shipments: (Changed Parts Only):

No Mixed Shipments

### Part Number(s) being Modified:

Part Number	Part Discontinued per PCN	Customer Drawing	Customer Part Number	Alias Part Number(s)	Substitute Part Number	Substitute Alias Part Number(s)	Description Of Difference
<a href="#">ADA035N00000151000</a>	NO			"ADFA035NN00000151000"			
<a href="#">AEA113N00000201000</a>	NO			"AEGA113NN00000201000"			
<a href="#">AEA227N00000201000</a>	NO			"AEGA227NN00000201000"			
<a href="#">AGC113N00001200000</a>	NO			"AEDC113NN00001200000"			
<a href="#">AGC113N00001215000</a>	NO			"AEDC113NN00001215000"			
<a href="#">AKA020N00090200000</a>	NO			"AKUA020NN00090200000"			
<a href="#">AKA020N00410200000</a>	NO			"AKUA020NN00410200000"			
<a href="#">AKA020N00410240000</a>	NO			"AKUA020NN00410240000"			
<a href="#">AKA020N00590038000</a>	NO			"AKUA020NN00590038000"			
<a href="#">AKA020N00620200000</a>	NO			"AKUA020NN00620200000"			
<a href="#">AKA020N00750200000</a>	NO			"AKUA020NN00750200000"			
<a href="#">AKA034N00090200000</a>	NO			"AKUA034NN00090200000"			
<a href="#">AKA034N00400100000</a>	NO			"AKUA034NN00400100000"			
<a href="#">AKA034N00400200000</a>	NO			"AKUA034NN00400200000"			
<a href="#">AKA034N00590038000</a>	NO			"AKUA034NN00590038000"			
<a href="#">AKA034N00600200000</a>	NO			"AKUA034NN00600200000"			
<a href="#">AKA034N00610200000</a>	NO			"AKUA034NN00610200000"			
<a href="#">AKA034N00620200000</a>	NO			"AKUA034NN00620200000"			
<a href="#">AKA034N00730255000</a>	NO			"AKUA034NN00730255000"			
<a href="#">AKA035N00590038000</a>	NO			"AKUA035NN00590038000"			
<a href="#">AKA035N00730255000</a>	NO			"AKUA035NN00730255000"			
<a href="#">ASA020N00390235000</a>	NO			"ASTA020NN00390235000"			
<a href="#">ASA035N00100235000</a>	NO			"ASTA035NN00100235000"			
<a href="#">ASA035N00400235000</a>	NO			"ASTA035NN00400235000"			
<a href="#">ASA035N00410100000</a>	NO			"ASTA035NN00410100000"			
<a href="#">ASA035N00410235000</a>	NO			"ASTA035NN00410235000"			
<a href="#">ASA035N00610235000</a>	NO			"ASTA035NN00610235000"			
<a href="#">ASA035N00620235000</a>	NO			"ASTA035NN00620235000"			
<a href="#">AUA020N00480150000</a>	NO			"ASDA020NN00480150000"			
<a href="#">AUA034N00420150000</a>	NO			"ASDA034NN00420150000"			
<a href="#">AUA034N00590150000</a>	NO			"ASDA034NN00590150000"			

Part Number	Part Discontinued per PCN	Customer Drawing	Customer Part Number	Alias Part Number(s)	Substitute Part Number	Substitute Alias Part Number(s)	Description Of Difference
<a href="#">AJA035N00420150000</a>	NO			"ASDA035NN00420150000"			
<a href="#">AJA035N00480150000</a>	NO			"ASDA035NN00480150000"			
<a href="#">AJA035N00580150000</a>	NO			"ASDA035NN00580150000"			
<a href="#">AJA035N00590150000</a>	NO			"ASDA035NN00590150000"			

Part Number(s) being Modified:

Part Number	Part Discontinued per PCN	Customer Drawing	Customer Part Number	Alias Part Number(s)	Substitute Part Number	Substitute Alias Part Number(s)	Description Of Difference
<a href="#">AKA020N00410240000</a>	NO			"AKUA020NN00410240000"			

Part Number(s) being Modified:

Part Number	Part Discontinued per PCN	Customer Drawing	Customer Part Number	Alias Part Number(s)	Substitute Part Number	Substitute Alias Part Number(s)	Description Of Difference
<a href="#">ADA035N00000151000</a>	NO			"ADFA035NN00000151000"			
<a href="#">AEA113N00000201000</a>	NO			"AEGA113NN00000201000"			
<a href="#">AGC113N00001215000</a>	NO			"AEDC113NN00001215000"			
<a href="#">AKA020N00410240000</a>	NO			"AKUA020NN00410240000"			
<a href="#">AKA020N00620200000</a>	NO			"AKUA020NN00620200000"			
<a href="#">AKA020N00750200000</a>	NO			"AKUA020NN00750200000"			
<a href="#">AKA034N00590038000</a>	NO			"AKUA034NN00590038000"			
<a href="#">ASA035N00610235000</a>	NO			"ASTA035NN00610235000"			

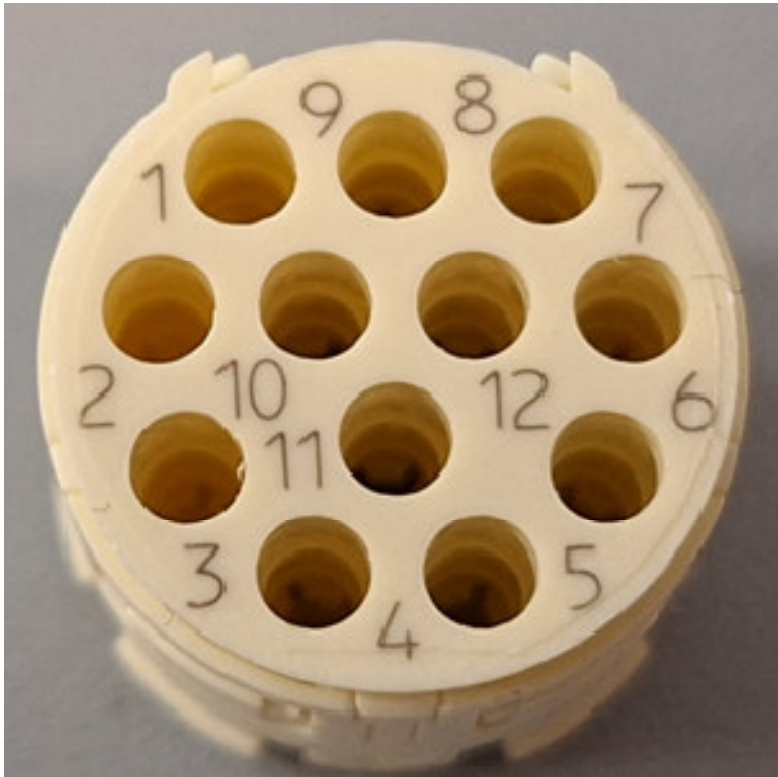
Part Number(s) being Modified:

Part Number	Part Discontinued per PCN	Customer Drawing	Customer Part Number	Alias Part Number(s)	Substitute Part Number	Substitute Alias Part Number(s)	Description Of Difference
<a href="#">ADA035N00000151000</a>	NO			"ADFA035NN00000151000"			
<a href="#">AEA113N00000201000</a>	NO			"AEGA113NN00000201000"			
<a href="#">AEA227N00000201000</a>	NO			"AEGA227NN00000201000"			
<a href="#">AGC113N00001200000</a>	NO			"AEDC113NN00001200000"			
<a href="#">AGC113N00001215000</a>	NO			"AEDC113NN00001215000"			
<a href="#">AKA020N00090200000</a>	NO			"AKUA020NN00090200000"			
<a href="#">AKA020N00410200000</a>	NO			"AKUA020NN00410200000"			
<a href="#">AKA020N00410240000</a>	NO			"AKUA020NN00410240000"			
<a href="#">AKA020N00590038000</a>	NO			"AKUA020NN00590038000"			
<a href="#">AKA020N00620200000</a>	NO			"AKUA020NN00620200000"			
<a href="#">AKA020N00750200000</a>	NO			"AKUA020NN00750200000"			
<a href="#">AKA034N00090200000</a>	NO			"AKUA034NN00090200000"			
<a href="#">AKA034N00400100000</a>	NO			"AKUA034NN00400100000"			
<a href="#">AKA034N00400200000</a>	NO			"AKUA034NN00400200000"			
<a href="#">AKA034N00590038000</a>	NO			"AKUA034NN00590038000"			
<a href="#">AKA034N00600200000</a>	NO			"AKUA034NN00600200000"			
<a href="#">AKA034N00610200000</a>	NO			"AKUA034NN00610200000"			
<a href="#">AKA034N00620200000</a>	NO			"AKUA034NN00620200000"			
<a href="#">AKA034N00730255000</a>	NO			"AKUA034NN00730255000"			
<a href="#">AKA035N00590038000</a>	NO			"AKUA035NN00590038000"			
<a href="#">AKA035N00730255000</a>	NO			"AKUA035NN00730255000"			
<a href="#">ASA020N00390235000</a>	NO			"ASTA020NN00390235000"			
<a href="#">ASA035N00100235000</a>	NO			"ASTA035NN00100235000"			
<a href="#">ASA035N00400235000</a>	NO			"ASTA035NN00400235000"			
<a href="#">ASA035N00410100000</a>	NO			"ASTA035NN00410100000"			

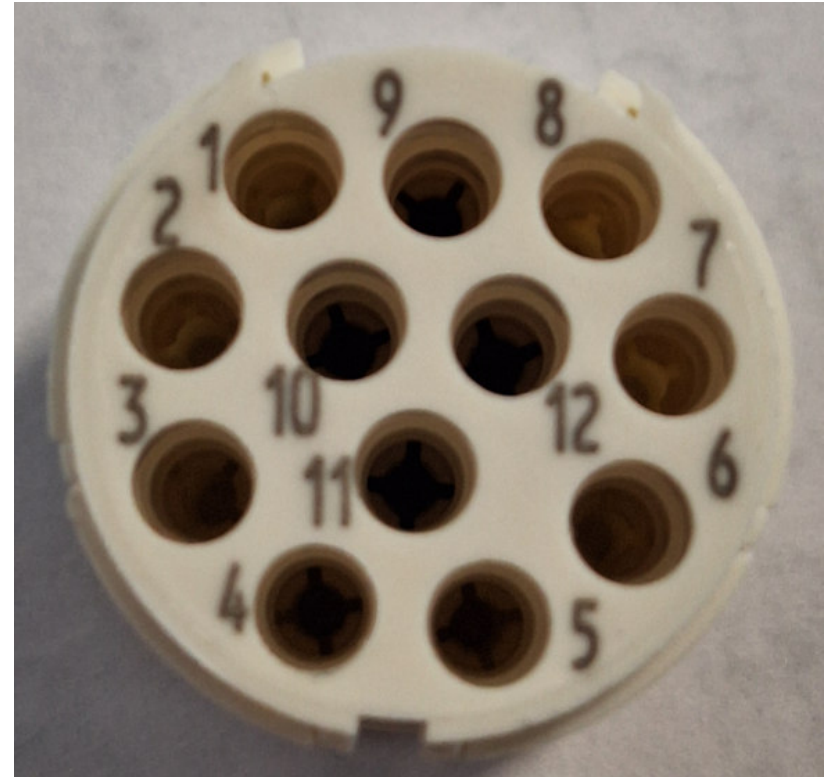
Part Number	Part Discontinued per PCN	Customer Drawing	Customer Part Number	Alias Part Number(s)	Substitute Part Number	Substitute Alias Part Number(s)	Description Of Difference
<a href="#">ASA035N00410235000</a>	NO			"ASTA035NN00410235000"			
<a href="#">ASA035N00610235000</a>	NO			"ASTA035NN00610235000"			
<a href="#">ASA035N00620235000</a>	NO			"ASTA035NN00620235000"			
<a href="#">AUA020N00480150000</a>	NO			"ASDA020NN00480150000"			
<a href="#">AUA034N00420150000</a>	NO			"ASDA034NN00420150000"			
<a href="#">AUA034N00590150000</a>	NO			"ASDA034NN00590150000"			
<a href="#">AUA035N00420150000</a>	NO			"ASDA035NN00420150000"			
<a href="#">AUA035N00480150000</a>	NO			"ASDA035NN00480150000"			
<a href="#">AUA035N00580150000</a>	NO			"ASDA035NN00580150000"			
<a href="#">AUA035N00590150000</a>	NO			"ASDA035NN00590150000"			

## Comparison old vs. new labeling 12 pos on side A

Before

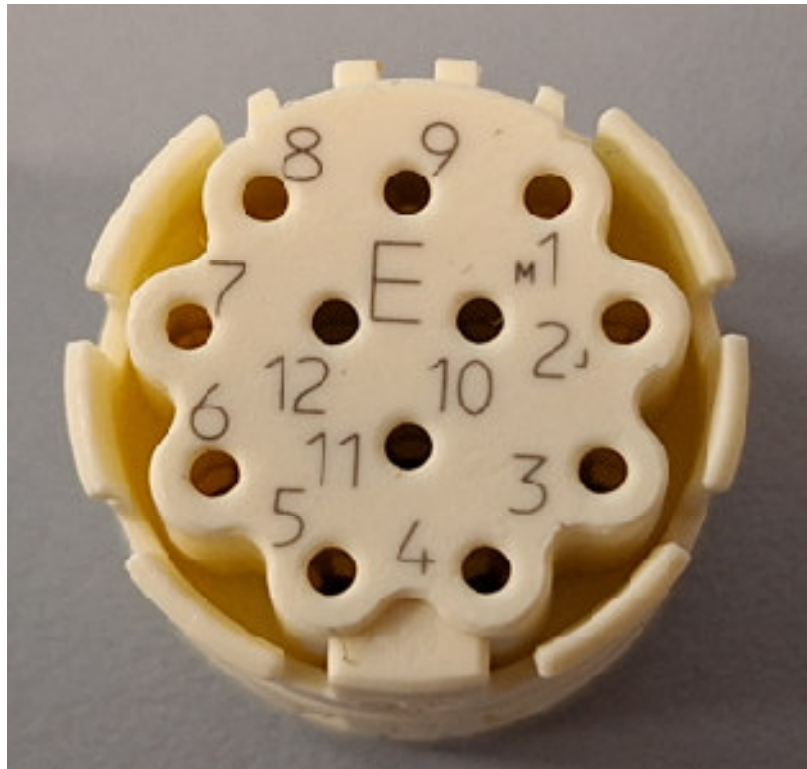


After



# Comparison old vs. new labeling 12 pos on side B

Before



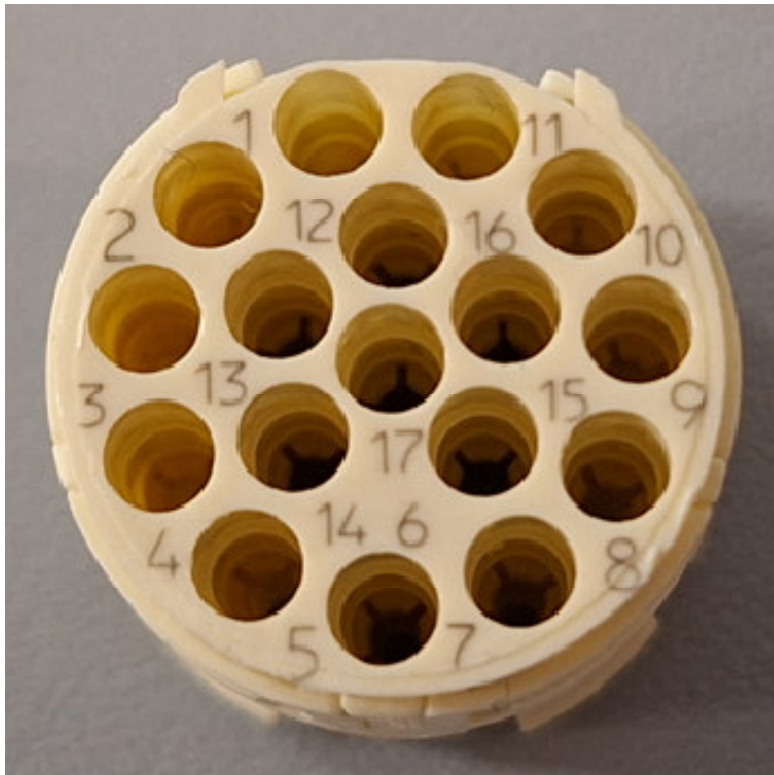
After



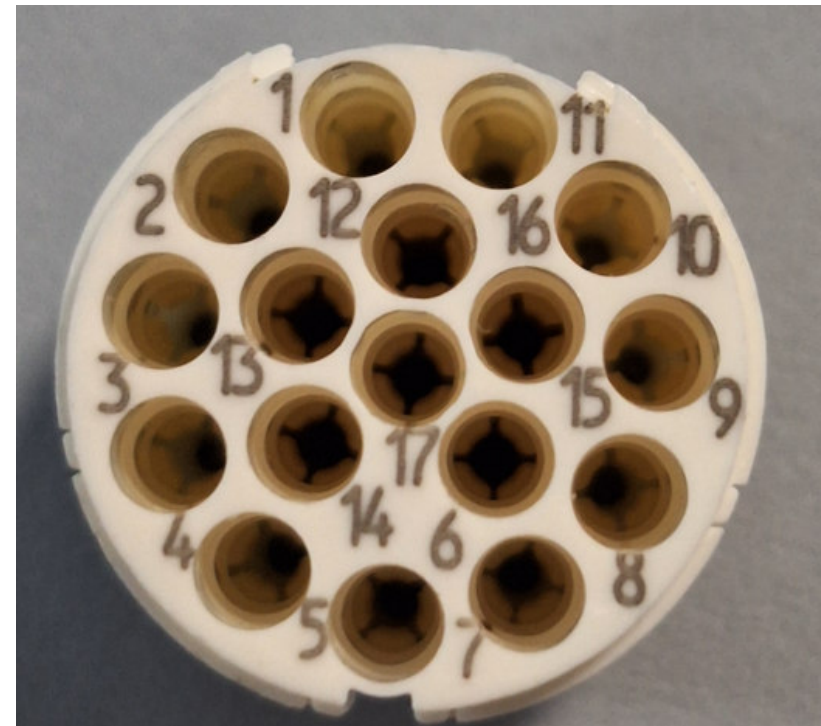


## Comparison old vs. new labeling 17 pos on side A

**Before:**

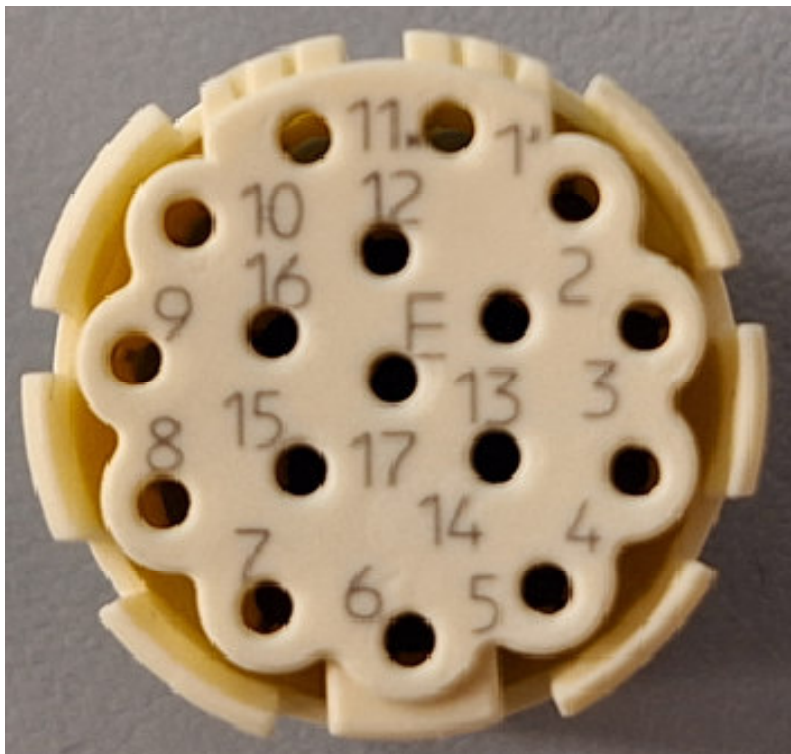


**After:**



# Comparison old vs. new labeling 17 pos on side B

**Before:**



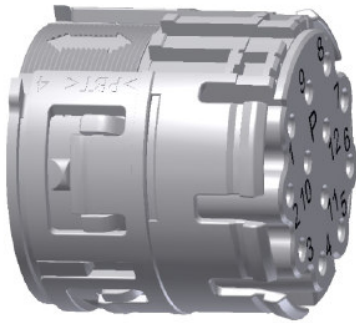
**After:**



# Optical difference, example showing 12 pos.



**Before:**



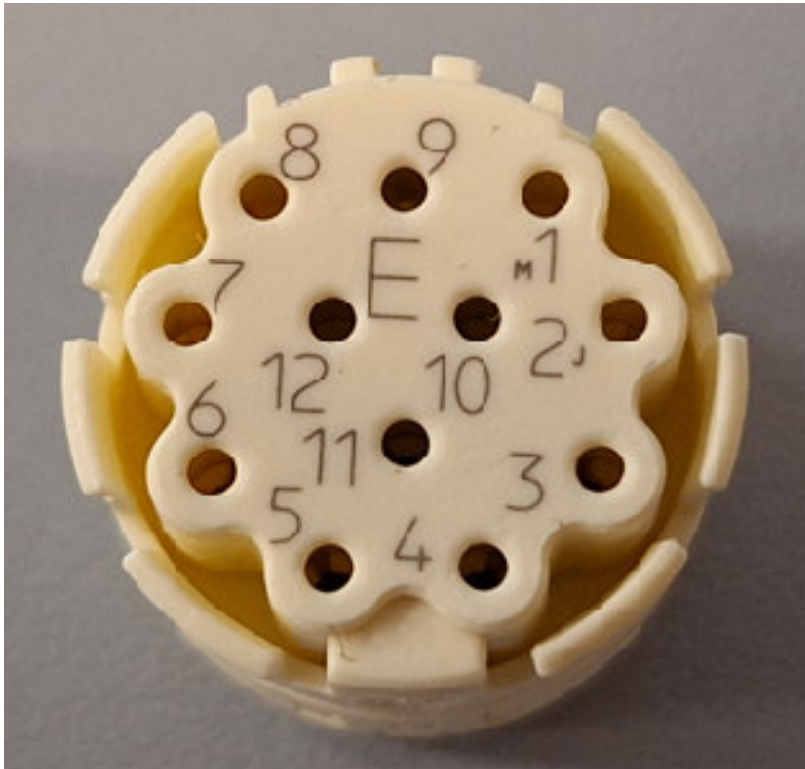
**After:**





Visible injection point on the mating surface (red circle)  
Visible stiffening ribs (yellow circles)

Before:



After:

