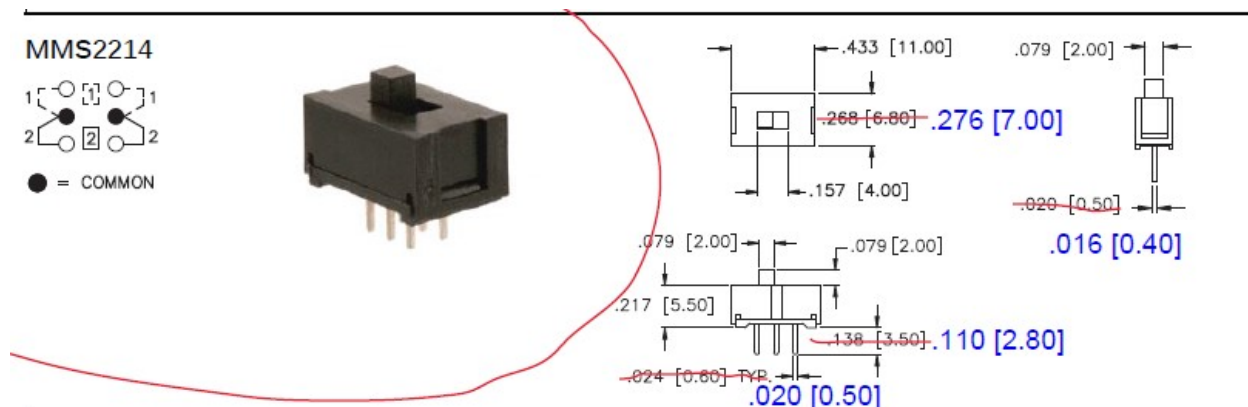


Product Change Announcement: MMS2214, SLB1470, SLB1470R, SLB1570, SLB12814

Dear Valued Customers,

We are excited to inform you about some significant updates to our product offerings. The following part numbers will be undergoing changes, and we want to ensure that you are aware of the modifications to better meet your requirements. The Old part numbers have been End of Lived and will be replaced by the new "A" part numbers. Please see the product comparison below. Should you have any questions, please reach out to your APEM contact for more information.

MMS2214 (New P/N: AMMS2214)



Material Change:

Case: Polyacetal → PA66

Actuator: PBT → PA66

Base: PA9T → PA9T

Features:

Epoxy sealed terminal → Molded sealed terminal.

APEM, Inc.

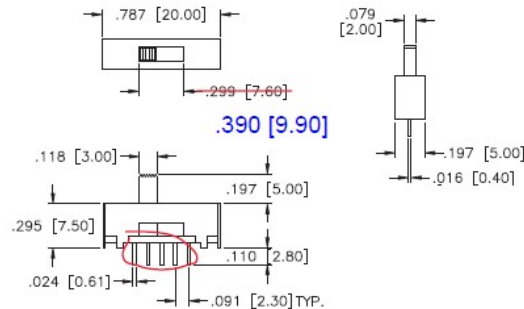
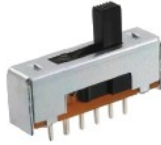
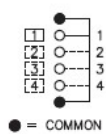
10 New England Business Center Dr • Andover, Massachusetts 01810 USA • Tel: 978-372-1602

970 Park Center Drive • Vista California 92081 USA • Tel: 760-598-2518

www.apem.com

SLB1470 (New P/N: ASLB1470)

SLB1470



Material Change:

Frame: Zinc Plated Steel → SPTE

Actuator: PBT → PA66

Base: PA9T → PA9T

Features:

Washable → Not washable

Epoxy sealed terminal → Molded sealed terminal

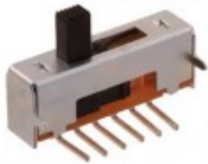
Specifications:

Initial contact resistance: 20m Ohm → 25m Ohm

Operating Temperature: -20°C to +60°C → -20°C to +80°C

Wave Soldering: 260°C MAX. for 3sec. → 255°C MAX for 5 sec.

SLB1470R (New P/N: ASLB1470R)



Material Change:

Frame: Zinc Plated Steel → SPTE

Actuator: PBT → PA66

Base: PA9T → PA9T

Features:

Washable → Not washable

Epoxy sealed terminal → Molded sealed terminal

Specifications:

Initial contact resistance: 20m Ohm → 25m Ohm

Operating Temperature: -20°C to +60°C → -20°C to +80°C

Wave Soldering: 260°C MAX. for 3sec. → 255°C MAX for 5 sec.

APEM, Inc.

10 New England Business Center Dr • Andover, Massachusetts 01810 USA • Tel: 978-372-1602

970 Park Center Drive • Vista California 92081 USA • Tel: 760-598-2518

www.apem.com



SLB1570 (New P/N: ASLB1570)



Material Change:

Frame: Zinc Plated Steel → SPTE

Actuator: PBT → PA66

Base: PA9T → PA9T

Features:

Washable → Not washable

Epoxy sealed terminal → Molded sealed terminal

Specifications:

Initial contact resistance: 20m Ohm → 25m Ohm

Operating Temperature: -20°C to +60°C → -20°C to +80°C

Wave Soldering: 260°C MAX. for 3sec. → 255°C MAX for 5 sec.

SLB12814 (New P/N: ASLB12814)

Material Change:



Frame: Zinc Plated Steel → SPTE

Actuator: PBT → PA66

Base: PA9T → PA9T

Features:

Washable → Not washable

Epoxy sealed terminal → Molded sealed terminal

Specifications:

Initial contact resistance: 20m Ohm → 25m Ohm

Operating Temperature: -20°C to +60°C → -20°C to +80°C

Wave Soldering: 260°C MAX. for 3sec. → 255°C MAX for 5 sec.

Chris Do Vale | Senior Product Manager

APEM, Inc.

10 New England Business Center Dr • Andover, Massachusetts 01810 USA • Tel: 978-372-1602
970 Park Center Drive • Vista California 92081 USA • Tel: 760-598-2518

www.apem.com