



Product Change Notification

TE Connectivity

Product Change Notification: PCN-23-189877

PCN Date: 21-FEB-24

TE would like to inform you of the following change(s) to the listed TE Connectivity Product. In case of any further questions about this change(s), please contact your TE Connectivity Sales Engineer. Affected part, drawing and/or specification numbers are listed on the attached sheet(s).

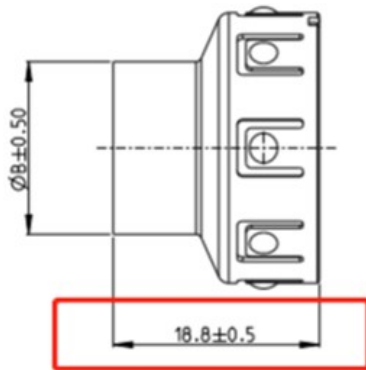
Product Description: (Text limited to 120 characters)

shielding

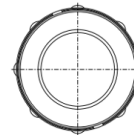
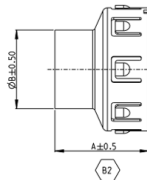
General Description of Changes

improve CD according to PD

the old size on the CD does not meet the PD and part.



Add A series size table



2355150-8	SHIELDING SLEEVE FOR 95mm ² WIRE	Cu - ALLOY	Sn PLATING OVER Ni	Ø20.3	19.81
2355150-4	SHIELDING SLEEVE FOR 50mm ² WIRE			Ø15.10	18.65
2355150-2	SHIELDING SLEEVE FOR 70mm ² WIRE			Ø17.50	18.65
P/N	DESCRIPTION	MATERIAL	PLATING	B	A

Reason for Changes:

Size is missing

PCN Attributes:

Product Category	Kind of Change
Emc Shield/Ferrule	Drawing
Change Feature:	Potential Customer Impact:
Revision Adjustment	No Customer Impact
Remarks:	

Estimated Dates:

Last Order Date (Obsolete Parts Only):	First Ship Date of Changed Items (Changed Parts Only):
30-OCT-2023	30-OCT-2023
Last Ship Date of Changed Items (Obsolete Parts Only):	Last Date for Mixed Shipments: (Changed Parts Only):
	No Mixed Shipments
Effectivity Date:	Date of First Samples:
	30-OCT-2023

Part Number(s) being Modified:

Part Number	Part Discontinued per PCN	Customer Drawing	Customer Part Number	Alias Part Number(s)	Substitute Part Number	Substitute Alias Part Number(s)	Description Of Difference
2355150-8	NO						

Part Number(s) being Modified:

Part Number	Part Discontinued per PCN	Customer Drawing	Customer Part Number	Alias Part Number(s)	Substitute Part Number	Substitute Alias Part Number(s)	Description Of Difference
2355150-8	NO						

Part Number(s) being Modified:

Part Number	Part Discontinued per PCN	Customer Drawing	Customer Part Number	Alias Part Number(s)	Substitute Part Number	Substitute Alias Part Number(s)	Description Of Difference
2355150-8	NO						