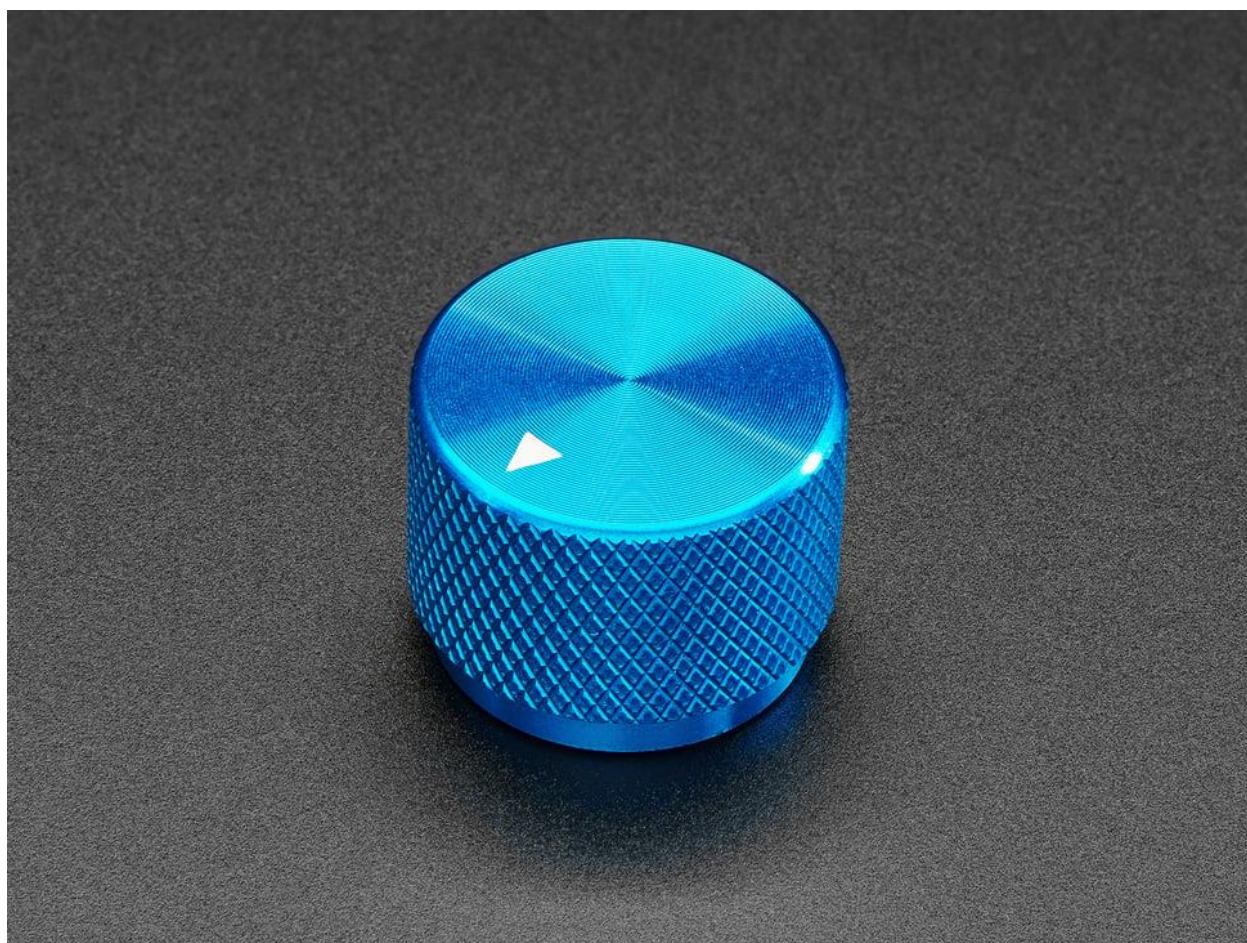




Anodized Aluminum Machined Knob – Blue – 20mm Diameter

Product ID: 5529



Description

These compact and luxurious machined knobs look fantastic and have a nice feel, a perfect way to upgrade your rotary encoder or potentiometer. We hand-selected the best knobs for your project in different sizes and varieties. This is an Anodized Aluminum Machined Knob in [Blue Steel](#).

It's a solid machined aluminum knob, with knurling on the sides for grippyness, and a shiny anodized coating. It looks like the type of knob you'd find in a souped-up recording studio. There's a white triangle on the finish so you can know where you are and figure out where you're going. We have these in a few different color

This knob has a set screw that uses a 2mm hex wrench (not included) which means it can be used with *either* T18 or D-shaft but it does not fit on round potentiometer shafts that are 6.3mm diameter ! Please use calipers or datasheets to verify that your target pot/encoder has 6mm or smaller shaft.

To use, simply loosen the set screw, press onto the shaft, and tighten the set screw so it no longer rotates.

Technical Details

Dimensions:

- Overall diameter: 20mm
- Inner diameter: 15mm
- Shaft hole: 6mm diameter with set screw
- Height: 12.5mm
- Weight: 11g