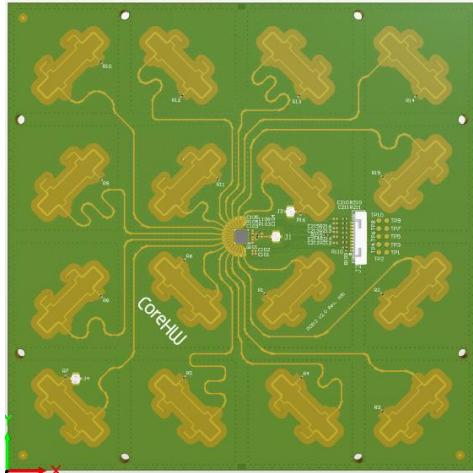
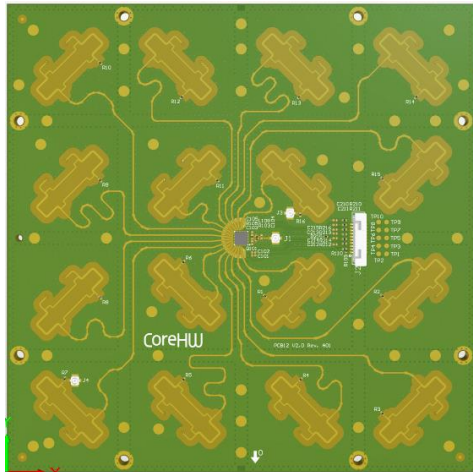
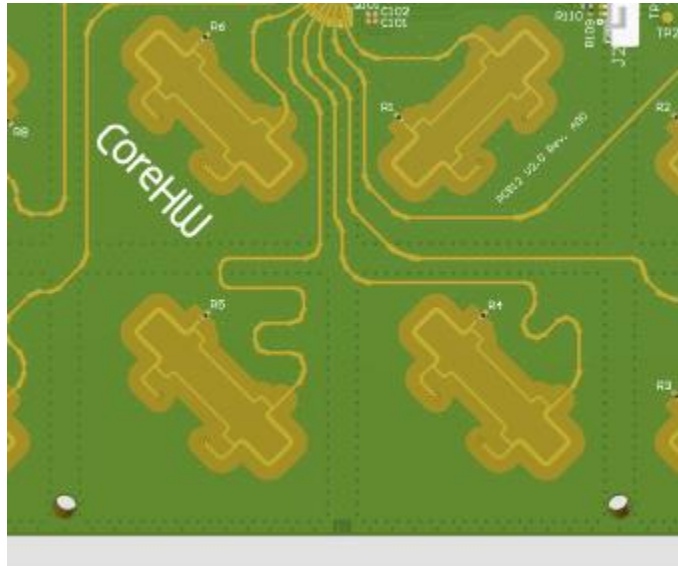


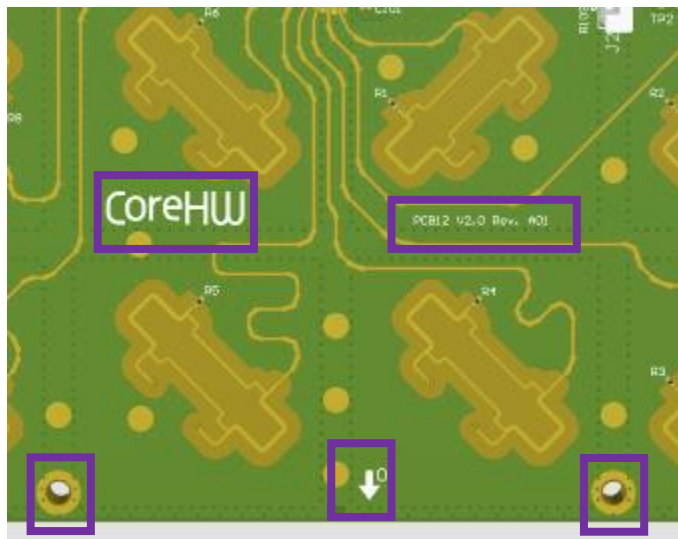
Title of Change	ANT2 revision from version 1.0 to version 1.1
Effective Date of Change	27 Nov 2023
Type of Change	Datasheet and product revision, including OPN change.
Reason for Change	<p>This revision improves product level electrical grounding options.</p> <p>This revision also mitigates the risk of improper assembly in the final product.</p>
Description of Change	<p>Distributed additional circular grounding pads around the layer 1 (40 places, diameter 3.5 mm) and added 1.5 mm annular solder mask opening around mounting screw holes (8 pcs)</p> <p>V1.0:</p>  <p>V1.1:</p> 

Added orientation marking at the bottom edge, changed locations of PCB name and CoreHW silkscreen texts on layer 1. Also, annular GND opening around two of screw towers are visible.

Layer 1 V1.0:

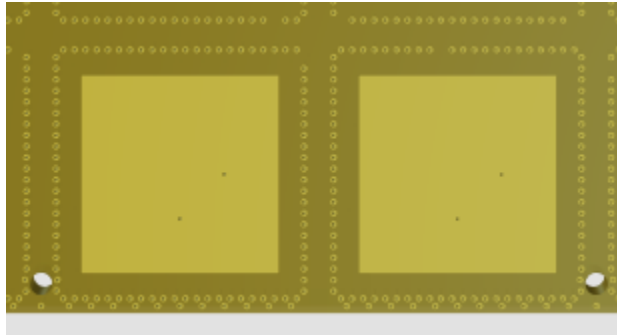


Layer 1 V1.1:

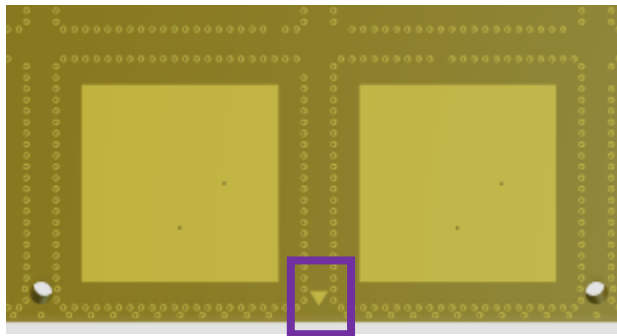


Added orientation marking on layer 4 bottom edge.

Layer 4 V1.0 (no orientation marking):

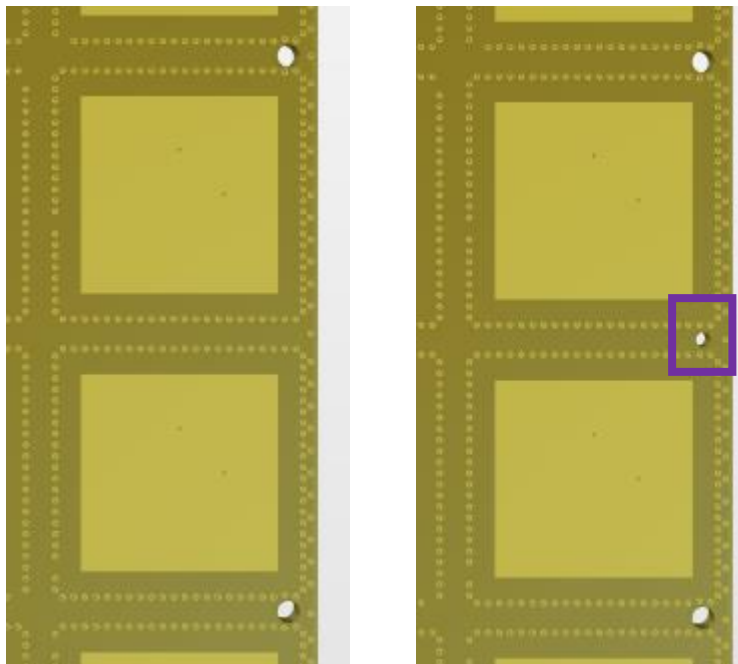


Layer 4 V1.1 (orientation marking added):



Added hole for optional orientation guiding pin.

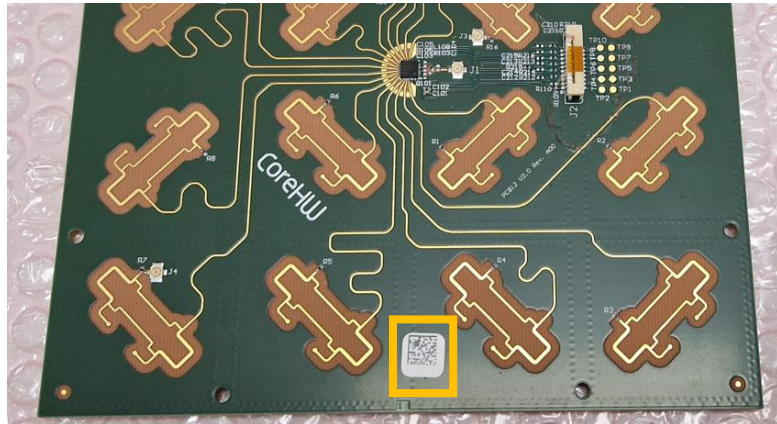
V1.0 (no guiding pin) vs V1.1 (guiding pin added)



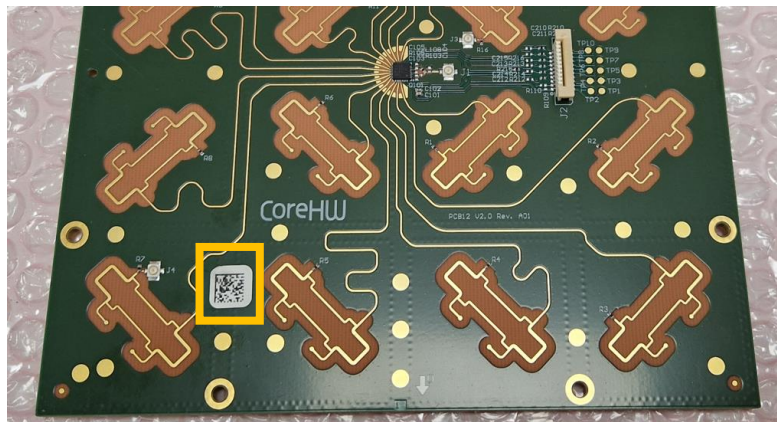
Marking/Traceability

Changed material can be identified by unique part number from data matrix label sticker.

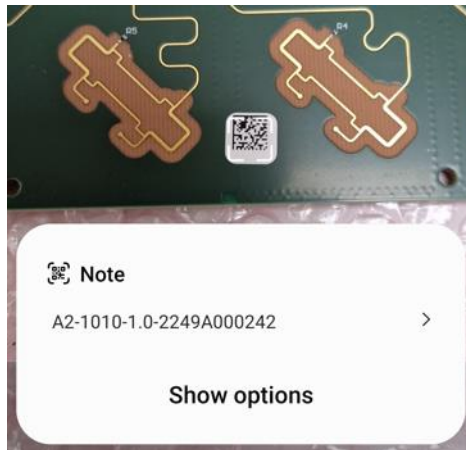
Location of the data matrix label in v1.0



Location of the data matrix label in v1.1



Data matrix code can be read to verify whether the antenna version is 1.0 (A2-1010-1.0-XYZ...) or 1.1 (A2-1010-1.1-XYZ...)



Contact for questions	support@corehw.com

Affected Products / Documents:

Document	From	To
Datasheet	Rev 1.0	Rev 1.1
Orderable Part Number	CHW1010-ANT2-1.0	CHW1010-ANT2-1.1

Impact to Form, Fit, Function:

This is a minor design change with no impact to form, fit or function. Customers should review the detailed description to determine any impacts on end product design.

Customer Action Required:

Customers should review the detailed description to assess its impact on end product design.

After the effective date, all orders for CHW1010-ANT2-1.0 will automatically convert to CHW1010-ANT2-1.1