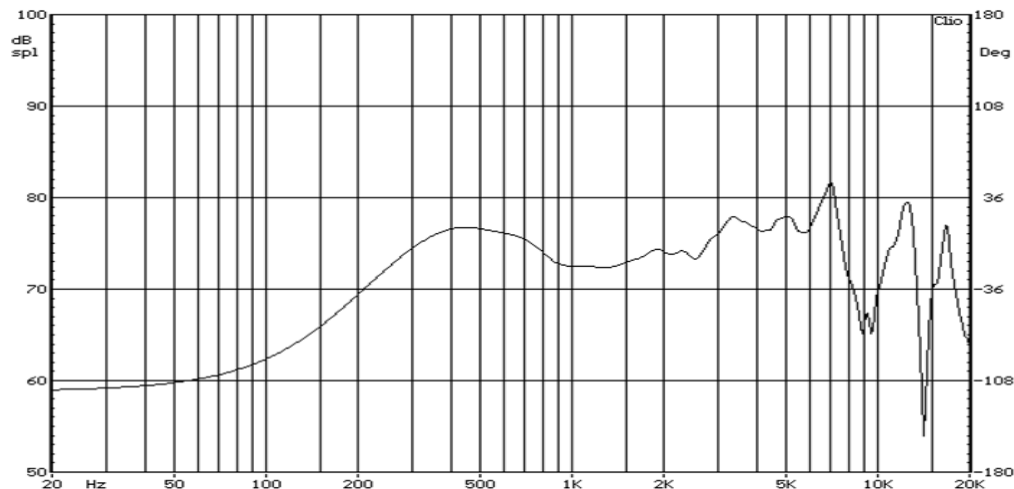


MAIN APPLICATION	TYPE	MAGNET	
Telecom/Automotive	50mm	Material	Magnet Size (Square)
		Ferrite	□28.5x□12.5x5mm

ITEM	SPECIFICATIONS	VALUES	TEST CONDITIONS
1	Dimensions	Ø50mm	per mechanical Drawings
2	Impedance	4Ω ±15%	1kHz / 1.0V
3	Nominal Power	1.0 Watts	
4	Max Power	2.0 Watts	
5	Resonant Frequency	360Hz ±20%	1.0V
6	Sensitivity (S.P.L.)	73dB ±2dB	0.1W/1m, Average 0.8/1.2/1.5kHz
7	Frequency Response	360Hz to 10KHz	0.1W/1m; Tolerance Max 20dB
8	THD	2% max	1kHz 0.1W/1m
9	Storage Temperature	-40°C to +85°C guaranteed range for transportation & storage	
10	Polarity	Membrane move forward when positive DC is applied to the '+' terminal	

ITEM	TEST	TEST CONDITIONS	RESULT
11	Rub & Buzz	Rated Power Sin wave (speaker frequency range)	No Buzzes or Rattles.
12	Load	White Noise at Rated Power for 200h @ 80°C	After 2 hour in room tep, speakers must meet specs items 2, 5, 6.
13	High Temp.	200 hours @ 80°C	
14	Temperature cycling	LCT/UCT 15min/15min; ramp rate: 20-30sec for shocks, each day 8:00am-8:00pm for cycling, and then 8:00pm-8:am at LCT or UCT room, 4days, total	
15	Humidity	200 hours @85°C / 85% Rh	
16	Vibration	Speakers in packing, 30Hz, up down axis 8hs	
17	Drop test	3 random free falls from H=100cm onto concrete or hardwood	

Typical Frequency Response

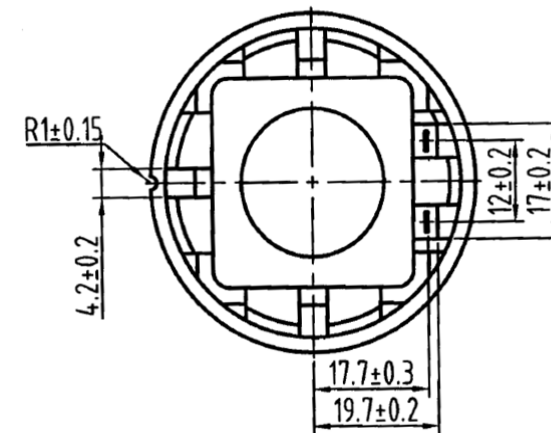
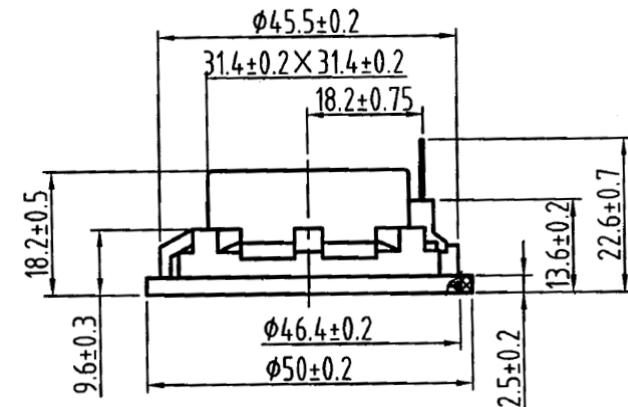


Property of Seltech. Specifications subject to change without notice. www.seltech-international.com

GASKET	MEMBRANE	BASKET	WEIGHT	REMARKS
-	Plastic	PP+GF	47.5±5 g	Extended temperature

PACKAGING	SPECIFICATIONS	
Carton size:		
Qty/Carton:		
Gross Weight:		

Mechanical Drawings (units: mm)



Part n° SOD20722X4CVT			
REV	DATE	SHEET	RoHS Compliance
0.1	14/09/2012	1 of 1	Yes