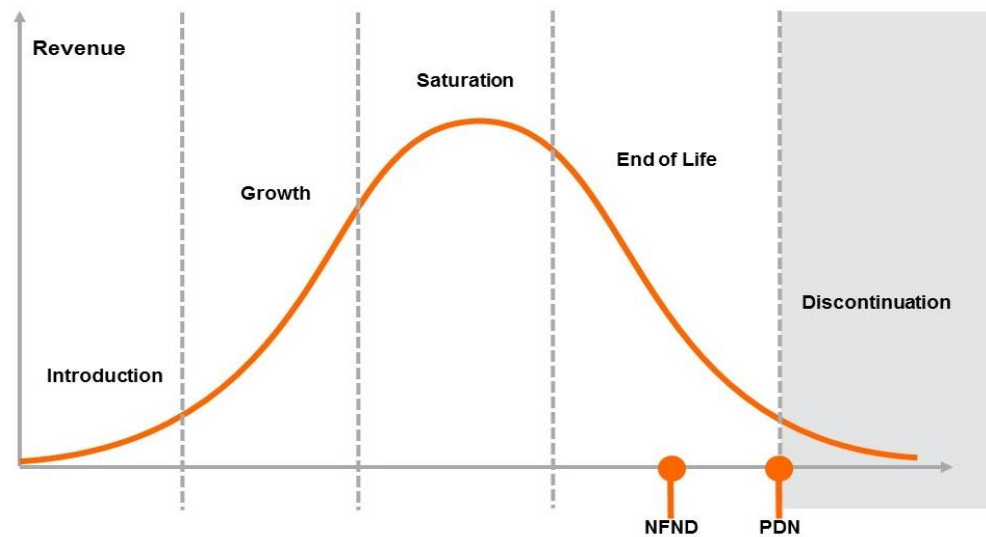


Product Or Individual Q-Code Discontinuation (acc. JEDEC J-STD-048) OS-PDN-2023-127

15 December 2023

Last order: 30 June 2024

Last delivery: 31 December 2024



Important notes:

- Series production ends with the LTO (Last Time Order) date.
- Last order must be placed latest before LTO date as standard order.
- Latest possible request date is defined by the LTD (Last Time Delivery) date and is valid for LTO orders as well as existing order backlog.
- The purchase quantity is limited to once per month until LTD date and is considered as NCNR (Non-Cancelable – Non-Returnable).
- To cover short term demand fluctuation, customer is asked to keep a sufficient buffer stock to avoid supply disruptions.

Please direct your feedback to your local Sales office.

DISCONTINUED				NEW (REPLACEMENT)		
Device	Ordering Code	Brand	Reason for discontinuation	Device	Datasheet Ordering Code	Brand
Whole Device						
LYYY G6SF	all	MULTILED				
LYYYG6SF-DAEA-45-0-50-R18-Z-HE	Q65110A6404	MULTILED	No sufficient future volume forecast	LY G6SP.02-8D8E-36-G3R3-140-R18	Q65113A3566	Advanced Power TOPLED
LYYYG6SF-CBDB-35-0-50-R18-Z	Q65110A6857	MULTILED	No sufficient future volume forecast	LY G6SP.02-8D8E-36-G3R3-140-R18	Q65113A3566	Advanced Power TOPLED
LYYYG6SF-CBEA-45-0-50-R18-Z	Q65110A8529	MULTILED	No sufficient future volume forecast	LY G6SP.02-8D8E-36-G3R3-140-R18	Q65113A3566	Advanced Power TOPLED
LYYYG6SF-CBDB-45-0-50-R18-Z	Q65110A8564	MULTILED	No sufficient future volume forecast	LY G6SP.02-8D8E-36-G3R3-140-R18	Q65113A3566	Advanced Power TOPLED
LYYYG6SF-DAEA-45-0-50-R18-Z-XX	Q65111A1180	MULTILED	No sufficient future volume forecast	LY G6SP.02-8D8E-36-G3R3-140-R18	Q65113A3566	Advanced Power TOPLED