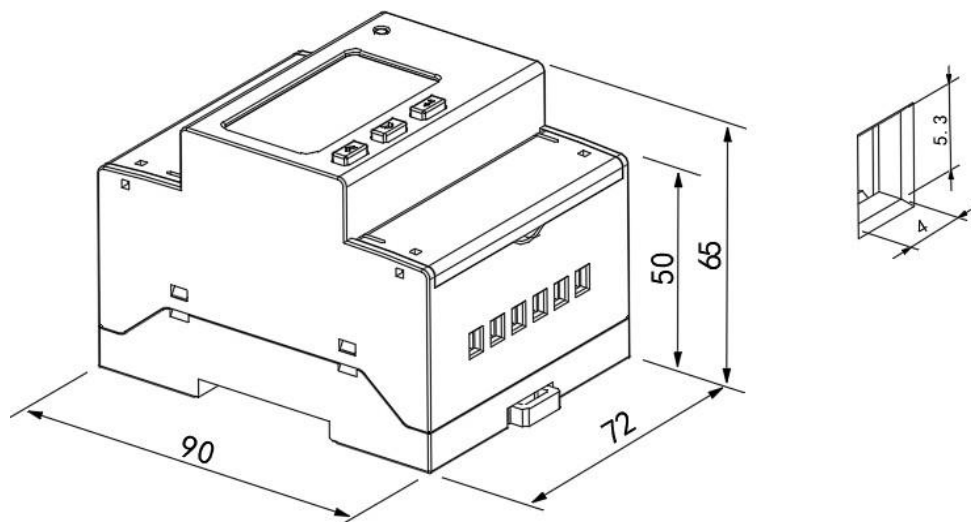


AMPOMETER

TECHNICAL DATA SHEET

MODEL AMP330



KEY FEATURES

Industrial-Grade

The AmpoMeter model AMP330 provides three-phase metering with a liquid-crystal display and MODBUS-RTU communication, suitable for industrial control systems, building management systems, and utility applications. Rated IP20.

High Accuracy

AMP330 is certified for Class 0.5 accuracy under IEC 62053-21

End-to-End System

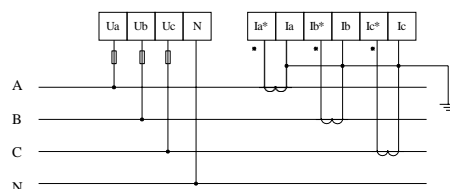
The AmpoHub works with AmpoCloud to provide energy use reporting, email and SMS alerts, data download, and API integration with 3rd party software platforms and tools.

SPECIFICATIONS

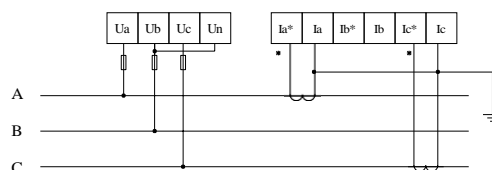
SPECIFICATION	DESCRIPTION
Dimensions (mm)	90 (H) x 72 (W) x 65 (D)
Working Temperature (C)	-25 to 55
Relative Humidity	≤95% non-condensing
Electrical Parameters	Current Voltage Energy Real Power Reactive Power Apparent Power Power Factor Frequency
Measurement Accuracy	Active energy (positive and negative) [Class 0.5] Reactive energy (positive and negative) [Class 2]
Harmonics	2-31 st voltage and current harmonic
Display	Liquid-crystal display (LCD) with background light
Key Programming	3 keys to set parameters (Up, Down, Enter)
Pulse Output	Active pulse output
Communication	RS-485 interface, MODBUS-RTU protocol
Compliance Marks	CE
Standards	IEC 62053-21
Protection Class	IP20

ELECTRICAL INSTALLATION

CAUTION: Installation of the AmpoMeter must be carried out by a professional electrician or equivalent qualified person. The process involves operating on and changing the wiring of an electrical panel. Improper installation may cause electrical hazards and/or safety issues. Ampotech shall not be responsible for any damage or risk caused by improper installation.



Wiring example for voltage (U) and current (I): three phase, four line connection via CT



Wiring example for voltage (U) and current (I): three phase, three line connection via CT