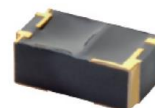


NO: PMS - 032
DATE: August 2023

PRODUCT: EE-Series (Partial) – Photomicrosensors
TYPE: DISCONTINUATION – Streamline Product Offering

EE-Series (Partial) Photomicrosensors - DISCONTINUATION

In an effort to streamline our product offering and focus on popular models of Omron's line of Photomicrosensors, OMRON will discontinue some of the EE-Series Photomicrosensors at the end of February 2024. There are no direct drop-in replacements. Omron suggests consideration of our EE-SY199 or EE-SY199-1 sensors as alternatives to the EE-SY1200 and EE-SY1200-1 sensors. (This requires re-evaluating the values of R_F and R_L used within existing circuits.) Please carefully read through this notification and note the differences. The following details will fully explain the discontinuation and suggested replacement considerations; should you have any additional questions, however, please communicate with the Sensor Product Manager, Roland Hiso.



LAST ORDER DATE (Last Time Buy Date)

February 29, 2024

Product Discontinuation

Model **EE-SA105**
Model **EE-SY1200**
Model **EE-SY1200-1**



Suggested Replacement

No suggested replacement
Model **EE-SY199**
Model **EE-SY199-1**

Differences from discontinued product:



Suggested Replacement Model	Body Color	Dimensions	Wire connection	Mounting Dimensions	Characteristics	Operation ratings	Operation methods
EE-SY199	**	--	**	--	--	-	-

** : Compatible
* : The change is a little/Almost compatible
-- : Not compatible
- : No corresponding specification

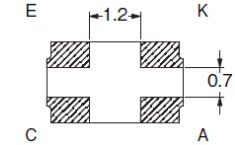
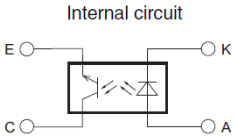
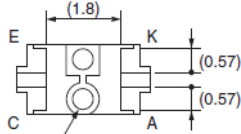
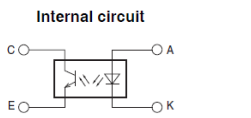
Discontinued Models and Suggested replacement:

Discontinued Model	Suggested replacement
EE-SA105	No suggested replacement
EE-SY1200	EE-SY199
EE-SY1200-1	EE-SY199-1

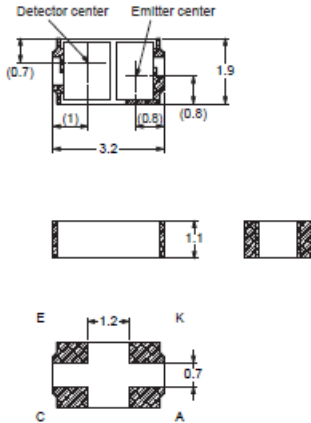
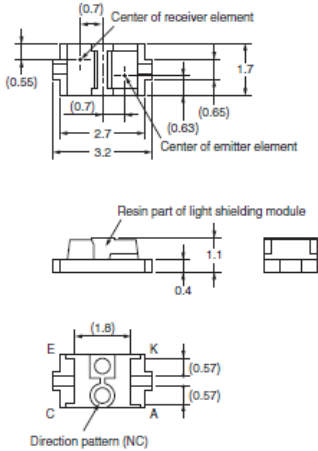
Body Color:

Discontinued Model Model EE-SY1200 / EE-SY1200-1	Suggested replacement Model EE-SY199 / EE-SY199-1
Black 	Black 

Wire Connection:

Discontinued Model Model EE-SY1200 / EE-SY1200-1	Suggested replacement Model EE-SY199 / EE-SY199-1																				
Wire connection   <table><thead><tr><th>Terminal No.</th><th>Name</th></tr></thead><tbody><tr><td>A</td><td>Anode</td></tr><tr><td>K</td><td>Cathode</td></tr><tr><td>C</td><td>Collector</td></tr><tr><td>E</td><td>Emitter</td></tr></tbody></table>	Terminal No.	Name	A	Anode	K	Cathode	C	Collector	E	Emitter	Wire connection   <table><thead><tr><th>Terminal No.</th><th>Name</th></tr></thead><tbody><tr><td>A</td><td>Anode</td></tr><tr><td>K</td><td>Cathode</td></tr><tr><td>C</td><td>Collector</td></tr><tr><td>E</td><td>Emitter</td></tr></tbody></table>	Terminal No.	Name	A	Anode	K	Cathode	C	Collector	E	Emitter
Terminal No.	Name																				
A	Anode																				
K	Cathode																				
C	Collector																				
E	Emitter																				
Terminal No.	Name																				
A	Anode																				
K	Cathode																				
C	Collector																				
E	Emitter																				

Dimensions:

Discontinued Model Model EE-SY1200 / EE-SY1200-1	Suggested replacement Model EE-SY199 / EE-SY199-1
Dimensions W×L×H : 3.2mm×1.9mm×1.1mm Sensing distance: 1mm ~ 4mm 	Dimensions W×L×H: 3.2mm×1.7mm×1.1mm Sensing distance: 1mm 

Characteristics:

Item	Discontinued Model Model EE-SY1200 / EE-SY1200-1	Suggested replacement Model EE-SY199 / Model EE-SY199-1
Emitter Forward current	Maximum Ratings 50 mA	
Emitter pulse forward current	Maximum Ratings 500 mA (Conditions The pulse width is 10 μ s maximum with a frequency of 100 Hz.)	—
Emitter Reverse voltage	Maximum Ratings 4 V	Maximum Ratings 6 V
Detector Collector–Emitter	Maximum Ratings 30 V	Maximum Ratings 35 V
Detector Emitter –Collector	Maximum Ratings 5 V	Maximum Ratings 6 V
Detector Collector current	Maximum Ratings 20 mA	
Detector Collector dissipation	Maximum Ratings 50 mW	Maximum Ratings 75 mW
Operating temperature	-25°C ~ 85°C	
Storage temperature	-40°C ~ 100°C	
Emitter Forward voltage	TYP:1.2 V MAX:1.4 V (Conditions IF=20mA)	
Emitter Peak emission wavelength	TYP: 940nm	TYP: 950nm
Detector Light current 1	MIN: 200 μ A MAX: 1000 μ A (Conditions IF=10mA, VCE=2V, aluminum vapor deposition glass, d=4 mm)	
Detector Light current 2	MIN: 150 μ A (Conditions IF=4mA, VCE=2V, aluminum vapor deposition glass, d=1 mm)	MIN: 40 μ A TYP: 85 μ A MAX: 130 μ A (Conditions IF=4mA, VCE=2V, Aluminum- deposited surface, d=1 mm)
Detector Dark current	MAX: 200 nA (VCE=10V, 0 lx)	MAX: 100 nA (VCE=20V, 0 lx)
Detector Leakage current 1	MAX: 500 nA (Conditions IF=10mA, VCE=2V, Non- reflective state)	—
Detector Leakage current 2	MAX: 200 nA (Conditions IF=4mA, VCE=2V, Non- reflective state)	MAX: 500 nA (Conditions IF=4mA, VCE=2V, Non- reflective state)
Detector Peak spectral sensitivity wavelength	TYP:850 nm	TYP:930 nm
Rising time	TYP:30 μ s (Conditions Vcc=2 V, RL=1 k Ω , IL=100 μ A, d=1 mm)	TYP:20 μ s MAX:100 μ s (Conditions Vcc=2 V, RL=1 k Ω , IL=100 μ A, d=1 mm)
Falling time	TYP:30 μ s (Conditions Vcc=2 V, RL=1 k Ω , IL=100 μ A, d=1 mm)	TYP:20 μ s MAX:100 μ s (Conditions Vcc=2 V, RL=1 k Ω , IL=100 μ A, d=1 mm)

* Sales teams should communicate this discontinuation with their OEM's and CEM's.
For further technical support and any questions, please communicate with Product Marketing.

Specifications in this product news are as of the issue date and are subject to change without notice.
Only main changes in specifications are described in this document. Please be sure to read the relevant catalogs, datasheets, product
specifications, instructions, and manuals for precautions and necessary information when using products.
This PCN is intended for use in the Americas
Last time buy dates are subject to change based on availability