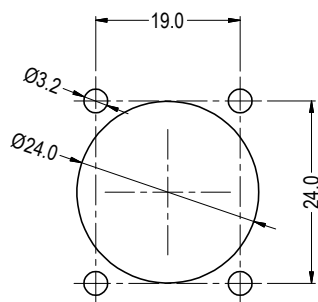
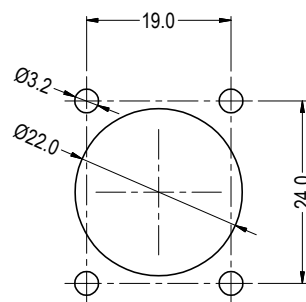


IDEAL PANEL CUT-OUT
FOR FRONT MOUNTING



SIMPLIFIED PANEL CUT-OUT
FOR FRONT MOUNTING



PANEL CUT-OUT
FOR REAR MOUNTING

ITEM	DESCRIPTION	MATERIAL	FINISH
1	BODY MOULDING	PA66 UL V2	BLACK
2	CONTACT PINS (3x)	BRASS	GOLD PLATE
3	AT GASKET	NEOPRENE	BLACK

RoHS
COMPLIANT

TOLERANCE
NO DEC. PLACE ±
1 DEC. PLACE ±
2 DEC. PLACE ±
HOLE Ø ±
ANGLES ±
UNLESS
OTHERWISE STATED

Cliff Electronic Components Ltd.

76 Holmetherpe Avenue, Holmetherpe Industrial Estate,
Redhill, Surrey, RH1 2PF, England, UK
Tel: 01737-771375 Fax: 01737-766012 Website: www.cliffuk.co.uk

THE CONTENTS OF THIS DOCUMENT MUST NOT BE COPIED OR DISCLOSED
TO A 3rd PARTY WITHOUT WRITTEN PERMISSION OF CLIFF UK. © 2013

DIMENSIONS IN MILLIMETERS UNLESS OTHERWISE STATED. WORK TO DIMENSIONS. REMOVE ALL BURRS. IF IN DOUBT ASK.

MATERIAL: SEE TABLE

FINISH: SEE TABLE

DRAWN: NJB

APPROVED: DPJ

3rd ANGLE PROJECTION:

TITLE: LATCHING AIR-TIGHT 3-PIN FEMALE PCB XLR SOCKET

DRWG. No. **CP30081**

DO NOT SCALE

FORM: A4DRWGH