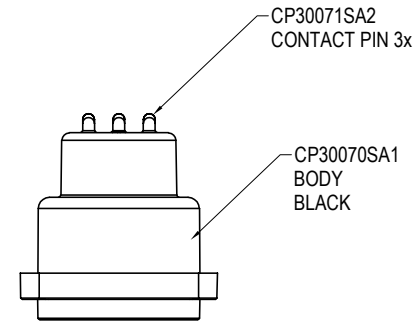
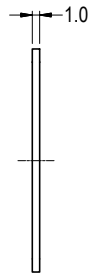
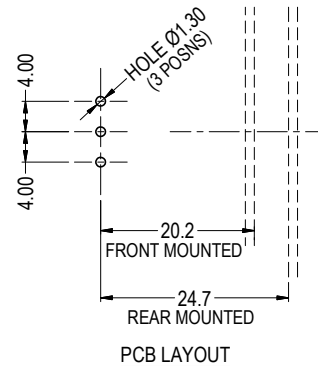
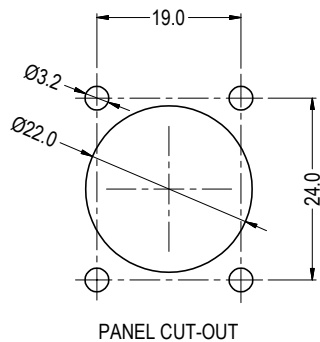
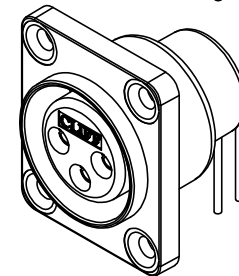
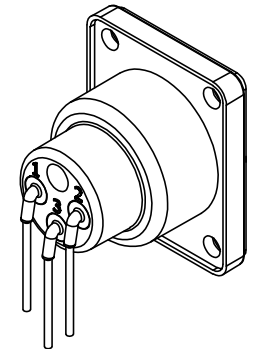
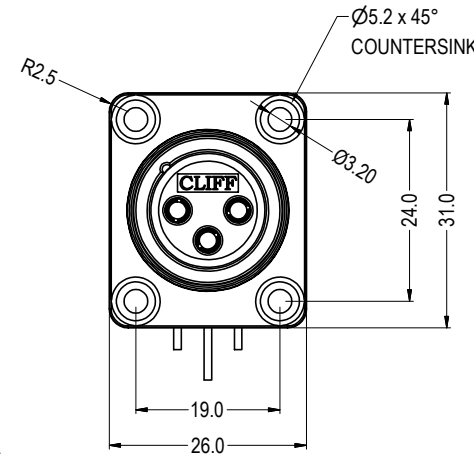
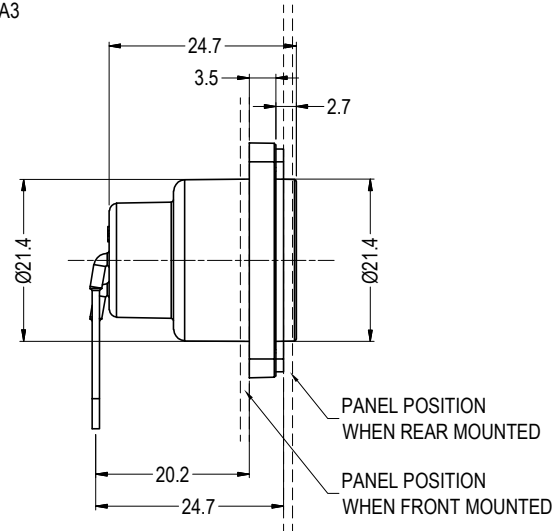
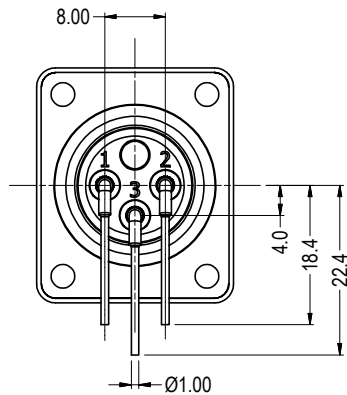


SUPPLIED WITH GASKET
CP30060SA3



ISS.	AMEND	DATE
1	ISSUED	05/11/12
2	ISO VIEWS CORRECT	01/09/14
3	ADD MATERIAL TABLE	18/06/21



ITEM	DESCRIPTION	MATERIAL	FINISH
1	BODY MOULDING	PA66 UL V2	BLACK
2	CONTACT PINS (3x)	BRASS	GOLD PLATE
3	AT GASKET	NEOPRENE	BLACK

RoHS
COMPLIANT

TOLERANCE
NO DEC. PLACE ±
1 DEC. PLACE ±
2 DEC. PLACE ±
HOLE Ø ±
ANGLES ±
UNLESS
OTHERWISE STATED

Cliff Electronic Components Ltd.

76 Holmetherpe Avenue, Holmetherpe Industrial Estate,
Redhill, Surrey, RH1 2PF, England, UK
Tel: 01737-771375 Fax: 01737-766012 Website: www.cliffuk.co.uk

DIMENSIONS IN MILLIMETERS UNLESS OTHERWISE STATED. WORK TO DIMENSIONS. REMOVE ALL BURRS. IF IN DOUBT ASK.

3rd ANGLE PROJECTION:

DO NOT SCALE

MATERIAL: SEE TABLE

FINISH: SEE TABLE

DRAWN: NJB

APPROVED: DPJ

TITLE: AIR-TIGHT 3-PIN FEMALE 90° PCB XLR SOCKET

DRWG. No. CP30072

FORM: A4DRWGH