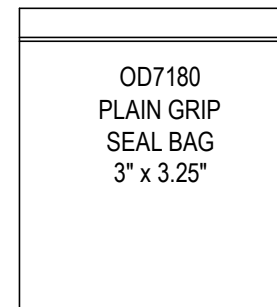
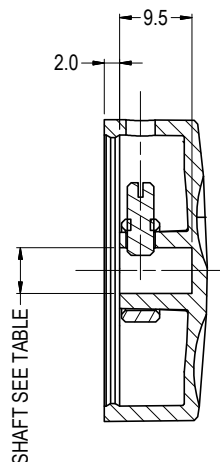


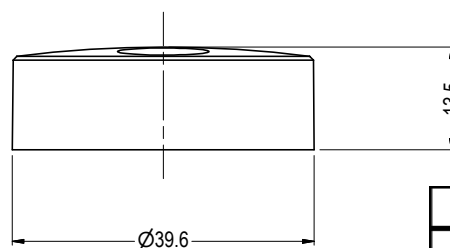
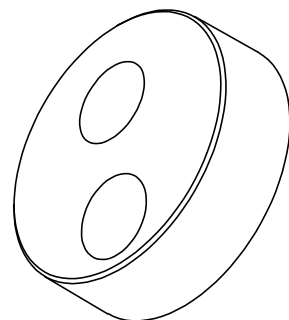
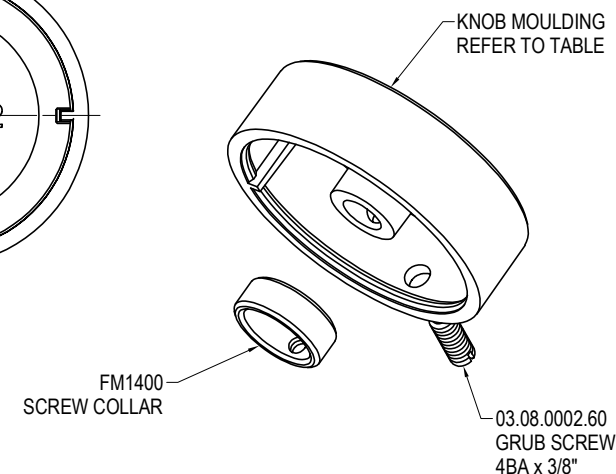
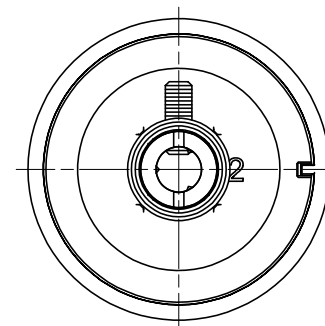
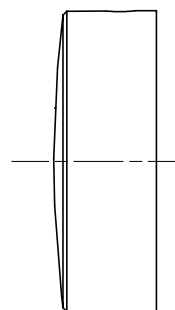
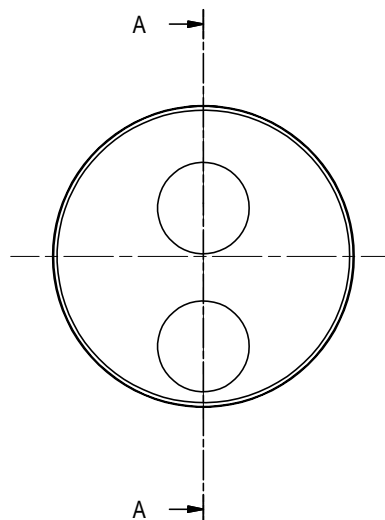
NOTE:  
INDIVIDUALLY BAG + PACK IN TRAY OF 25 / 50



ISS.	AMEND	DATE
1	ISSUED	03/10/11
2	REMOVE RED+BLUE	05/09/19



SECTION A-A



PART No.	COLOUR	KNOB	SHAFT
CL71671B	BLACK	CL71651SA1B	6mm SF
CL71671A	GREY	CL71651SA1A	6mm SF
CL71671W	WHITE	CL71651SA1W	6mm SF
CL71672B	BLACK	CL71652SA1B	1/4" SF
CL71672A	GREY	CL71652SA1A	1/4" SF
CL71672W	WHITE	CL71652SA1W	1/4" SF

**RoHS**  
COMPLIANT

TOLERANCE  
NO DEC. PLACE  $\pm 0.50$   
1 DEC. PLACE  $\pm 0.20$   
2 DEC. PLACE  $\pm 0.10$   
HOLE  $\varnothing \pm 0.10$   
ANGLES  $\pm 1/2^\circ$   
UNLESS  
OTHERWISE STATED

**Cliff Electronic Components Ltd.**

76 Holmethorpe Avenue, Holmethorpe Industrial Estate,  
Redhill, Surrey, RH1 2PF, England, UK  
Tel: 01737-771375 Fax: 01737-766012 Website: www.cliffuk.co.uk

DIMENSIONS IN MILLIMETERS UNLESS OTHERWISE STATED. WORK TO DIMENSIONS. REMOVE ALL BURRS. IF IN DOUBT ASK.

3rd ANGLE PROJECTION:

DO NOT SCALE

MATERIAL: SEE PART DRAWINGS

TITLE: KNOB K18 SF ASSEMBLY

FINISH: SEE PART DRAWINGS

DRWG. No. **CL71671**

DRAWN: NJB

APPROVED: DPJ

FORM: A4DRWGH

THE CONTENTS OF THIS DOCUMENT MUST NOT BE COPIED OR DISCLOSED  
TO A 3rd PARTY WITHOUT WRITTEN PERMISSION OF CLIFF UK. © 2011