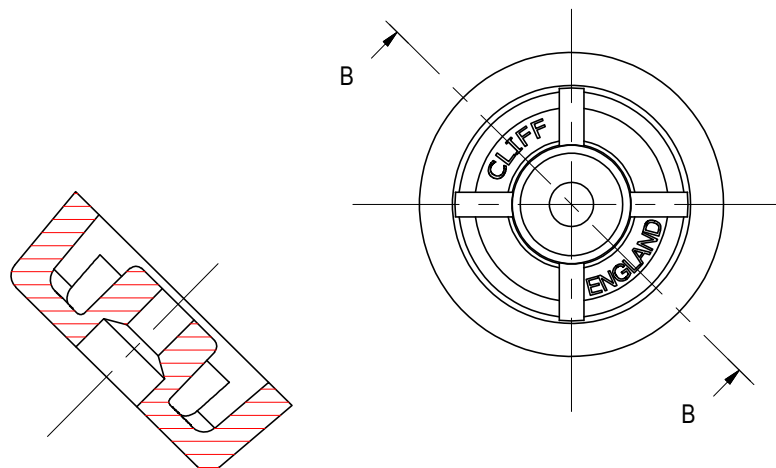
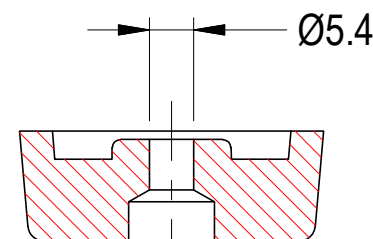
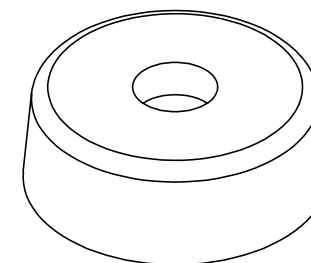
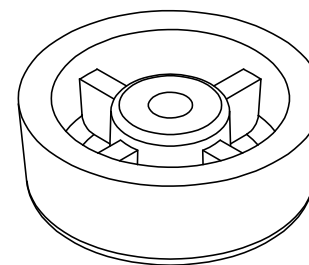
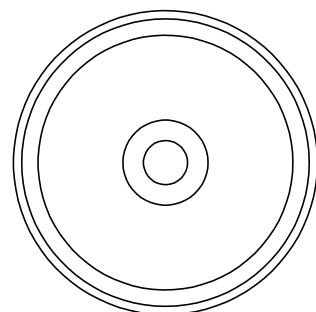
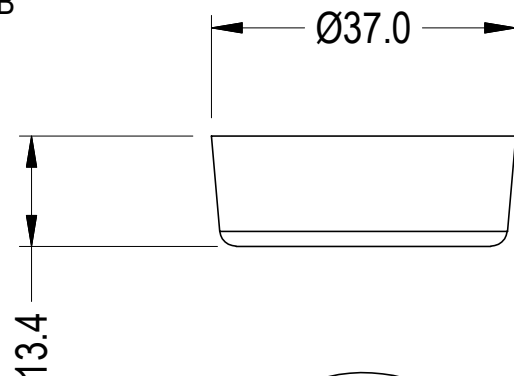


ISS.	AMEND	DATE
1	ISSUED	05/08/20



SECTION B-B



SECTION ON C/L

PART No.	TYPE	MATERIAL
CL1914	PF-1	POLYPROPYLENE (PP)
CL19145	PF-1GFN	GLASS FILLED NYLON
CL1916	RF-1	RUBBER

RoHS
COMPLIANT

TOLERANCE
NO DEC. PLACE ±
1 DEC. PLACE ±
2 DEC. PLACE ±
HOLE Ø ±
ANGLES ±
UNLESS
OTHERWISE STATED

DO NOT SCALE

Cliff Electronic Components Ltd.

76 Holmethorpe Avenue, Holmethorpe Industrial Estate,
Redhill, Surrey, RH1 2PF, England, UK
Tel: 01737-771375 Fax: 01737-766012 Website: www.cliffuk.co.uk

DIMENSIONS IN MILLIMETERS UNLESS OTHERWISE STATED. WORK TO DIMENSIONS. REMOVE ALL BURRS. IF IN DOUBT ASK.

3rd ANGLE PROJECTION:

MATERIAL: SEE TABLE

FINISH: AS MOULDED - BLACK

DRAWN: TJO

APPROVED: DPJ

TITLE: CABINET FOOT

DRWG. No. **CL1914**

FORM: A4DRWGH