

REV. Status

REVISION -
12/17/01 TS

REVISION A
ADDED RoHS
12/01/05 MP

REVISION B
ADDED TEMP
RATING
4/30/15 MP

AUDIO COUPLING MINIATURE ENCAPSULATED TRANSFORMER DESIGNED TO OPERATE 40mW MAX IN PRIMARY AND REFLECT A PRIMARY SOURCE IMPEDANCE OF APPROXIMATELY 10KΩCT WITH 1.2KΩCT LOAD ON SECONDARY.

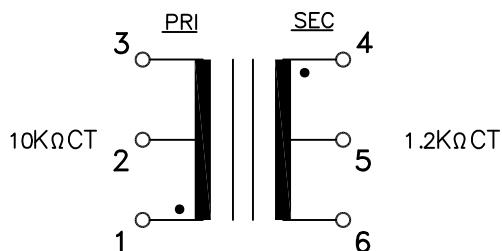
A. Electrical Specifications (@ 20°C)

1. Pri Source Impedance; 10KΩ CT
2. Sec Load Impedance; 1.2KΩ CT
3. Pri DC Current; 1mA MAX
4. Operating Level; 40mW MAX @ 300Hz
5. Frequency Response (relative to 1KHz);
±2.0dB, @ 300Hz to 100KHz
6. Longitudinal Balance; 60dB MIN @ 1KHz
7. DC Resistance;
(1-3) 1000Ω ±20%
(4-6) 220Ω ±20%
8. Turns Ratio; (1-3) : (4-6) = 2.88 : 1 ±2%
9. Dielectric Strength;
500Vrms 0.5 minute @ Pri - Sec

B. Marking; MET-14, TAMURA, Primary and Secondary Impedance, pin numbers, date code and country of origin

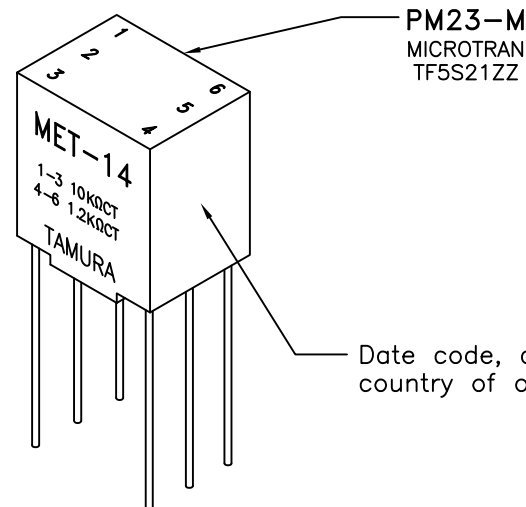
C. Operating Temperature: -20 to +85°C
Storage Temperature: -55 to +105°C

D. Schematic Diagram



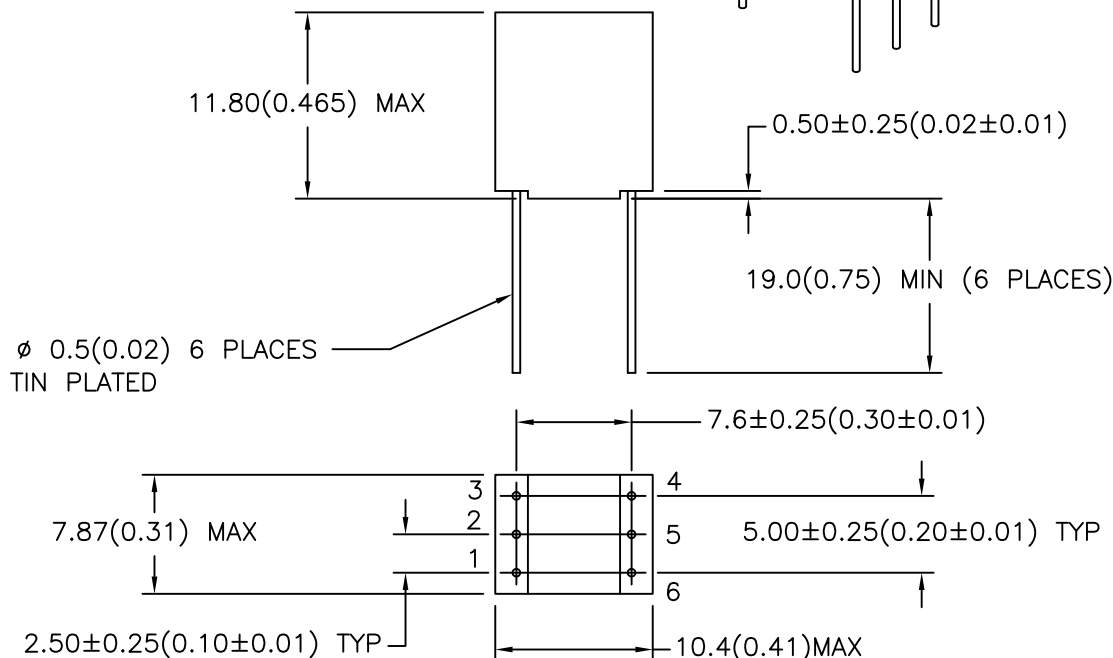
MODEL NUMBER

MET-14



Date code, and country of origin

E. Mechanical Specifications



TOLERANCES (mm)

≤ 4 ± 0.2
4 ≤ 20 ± 0.3
20 ≤ 50 ± 0.4

PREPARED BY:

C. POPPE

ENGINEER:

MATHI P.

SAFETY ENGINEER

DRAWING CONTROL NO.

P-A1-12966

REV

B

MODEL DESCRIPTION

AUDIO COUPLING
MINIATURE ENCAPSULATED XFMR

MODEL SPECIFICATION

MET-14

CONTENTS OF THIS DRAWING ARE
SUBJECT TO CHANGE WITHOUT
PRIOR NOTICE

TAMURA CORPORATION OF AMERICA

1040 SOUTH ANDREASEN DRIVE, #100 ESCONDIDO, CA. 92029
(951) 699-1270 FAX 7607400536

DIM: mm[In] SCL: 2/1 SH: 1 OF 1

APPROVED:

M. PITCHAI

PROPRIETARY NOTICE: THIS DRAWING PRINT OR DOCUMENT AND SUBJECT MATTER DISCLOSED HEREIN ARE PROPRIETARY ITEMS TO WHICH TAMURA RETAINS THE EXCLUSIVE RIGHT OF DISSEMINATION, REPRODUCTION, MANUFACTURE AND SALE. THIS DRAWING, PRINT OR DOCUMENT IS SUBMITTED IN CONFIDENCE FOR CONSIDERATION BY THE RECIPIENT ALONE UNLESS PERMISSION FOR FURTHER DISCLOSURE IS EXPRESSLY GRANTED IN WRITING.